

C³

CONSTRUCTION COMMUNICATION COUNCIL

APRIL 8, 2025

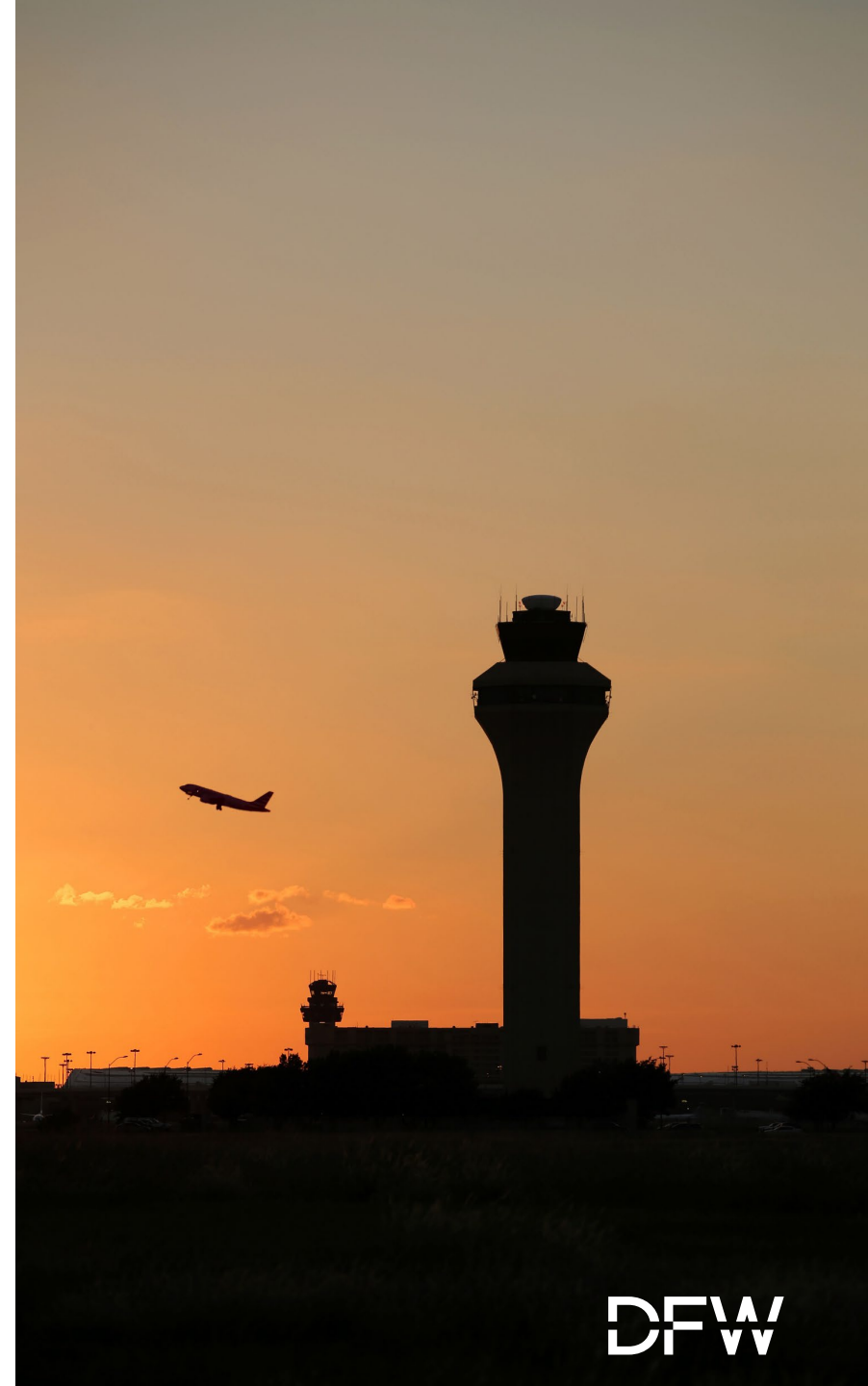


DFW

C3

APRIL 8, 2025

- ① Commercial Development
- ② Airfield
- ③ Landside
- ④ Facilities
- ⑤ CTA
- ⑥ AA Projects



COMMERCIAL DEVELOPMENT





AGENDA

- | | | |
|------------------------------|--------------|---------------|
| ① COMMERCIAL DEVELOPMENT <<< | ③ LANDSIDE | ⑤ CTA |
| ② AIRFIELD | ④ FACILITIES | ⑥ AA PROJECTS |

Schedule and Scope:

- Scheduled Work: Mass grading and compaction for Pad 5 and 6, sanitary sewer installation
- Board Infrastructure Work: Mass grading; sanitary sewer installation; trenching/excavation for storm line and water line installation; retaining wall construction; electrical duct bank work: April 2025 – Sept 2025
- Building 5 concrete foundation and site paving: May – June 2025
- Building 6 concrete foundation: May – June 2025

Potential Impacts:

- Passport Ave
 - Increased heavy equipment traffic Mon – Fri (7:00 am to 7:00 pm)
- Rental Car Drive
 - Minimal heavy equipment traffic Mon – Fri (7:00 am to 7:00 pm) (Sweeper on site)





AGENDA

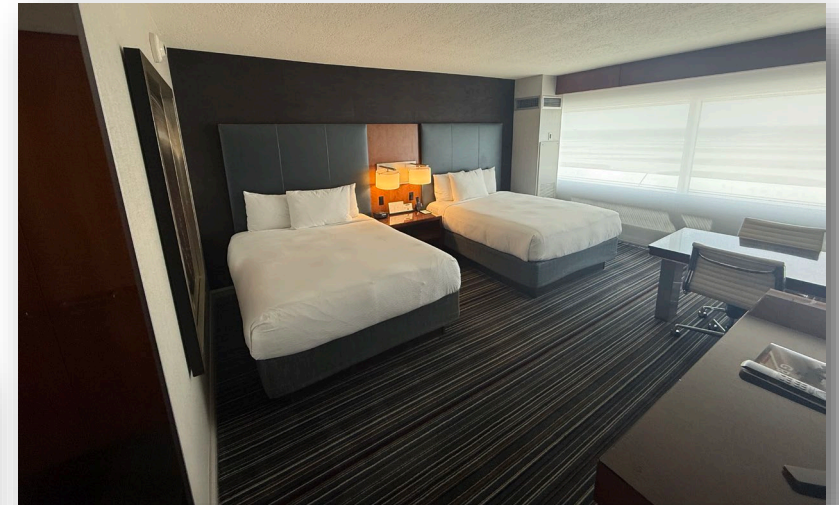
- ① COMMERCIAL DEVELOPMENT <<<
- ② AIRFIELD
- ③ LANDSIDE
- ④ FACILITIES
- ⑤ CTA
- ⑥ AA PROJECTS

Schedule and Scope:

- Renovation of Guest rooms and suites, meeting rooms, lobby and restaurant (public spaces)
- All work activities scheduled for: July –November 2025
- Meeting rooms, lobby and restaurant (public space phase): July – November 2025

Potential Impacts:

- No potential passenger/terminal impacts are anticipated currently
- All FFE and material deliveries will be at the Terminal D loading dock and delivered to respective locations



Existing Renovated



AIRFIELD PROGRAM



DFW



AGENDA

① COMMERCIAL DEVELOPMENT

③ LANDSIDE

⑤ CTA

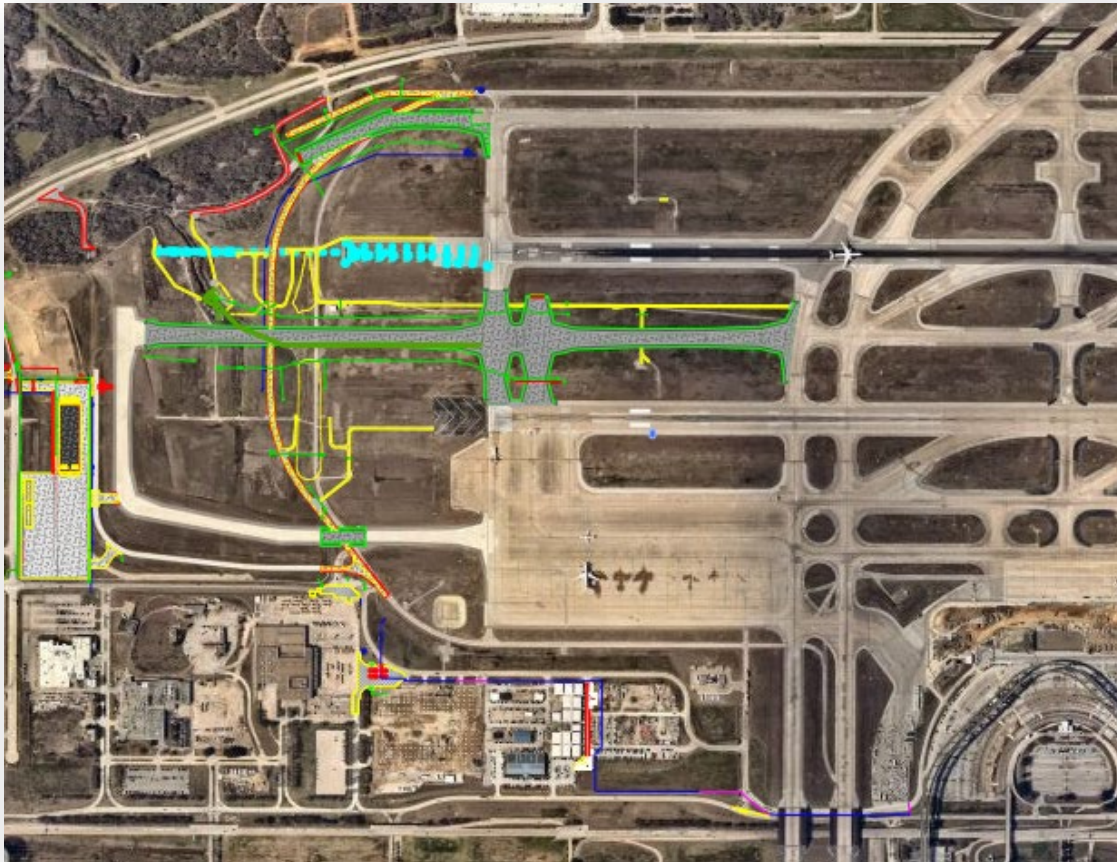
② AIRFIELD <<<

④ FACILITIES

⑥ AA PROJECTS

Schedule and Scope:

- Completion of the Southwest End Around Taxiway Package 1B (October 2026)
- Construction of Airfield Support Facilities Building (August 2026)
- Relocation of gate 314 (May 2025)



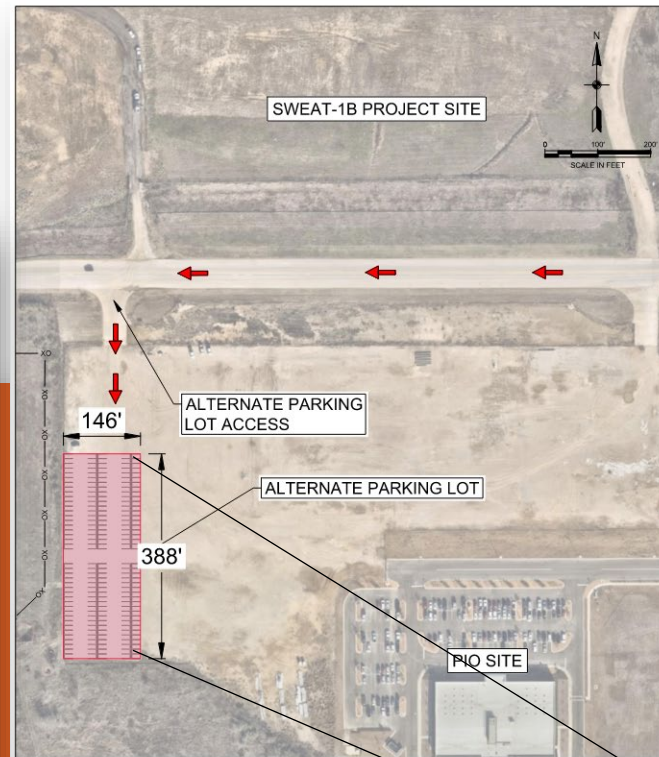
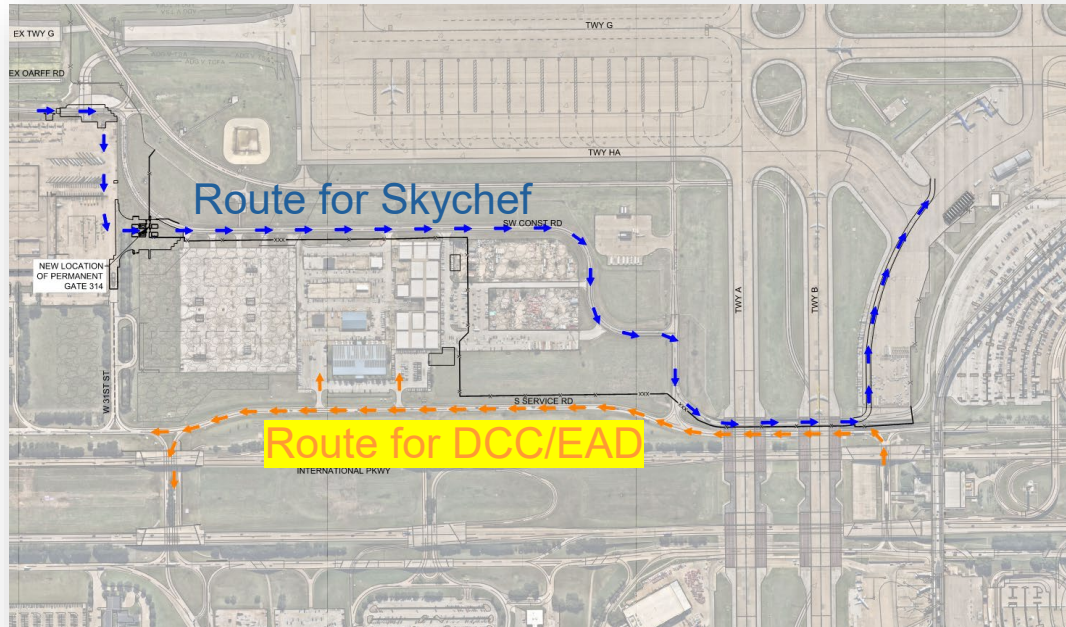


AGENDA

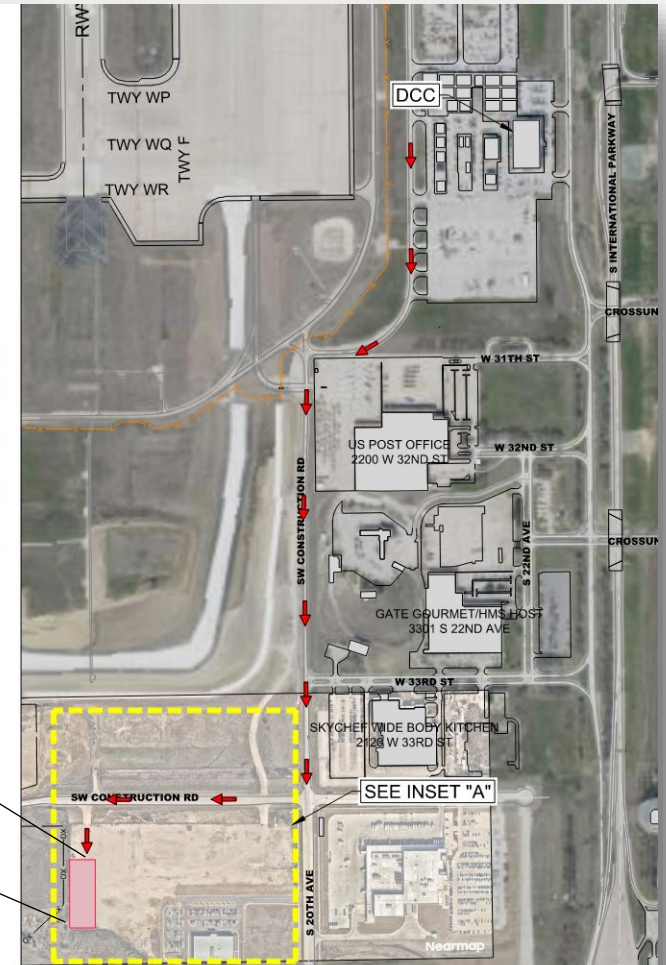
- | | | |
|--------------------------|--------------|---------------|
| ① COMMERCIAL DEVELOPMENT | ③ LANDSIDE | ⑤ CTA |
| ② AIRFIELD <<< | ④ FACILITIES | ⑥ AA PROJECTS |

Potential Impacts:

- Relocation of Gate 314 to new location and incorporation of SW construction road into the AOA
- No public entrance from SW Construction Road to DCC/EAD
- Alternate route to DCC/EAD complex from S. Service Road
- Alternate parking spot for company vehicles



INSET "A"
ALTERNATE PARKING LOCATION



ALTERNATE PARKING LOCATION
ROUTE PLAN

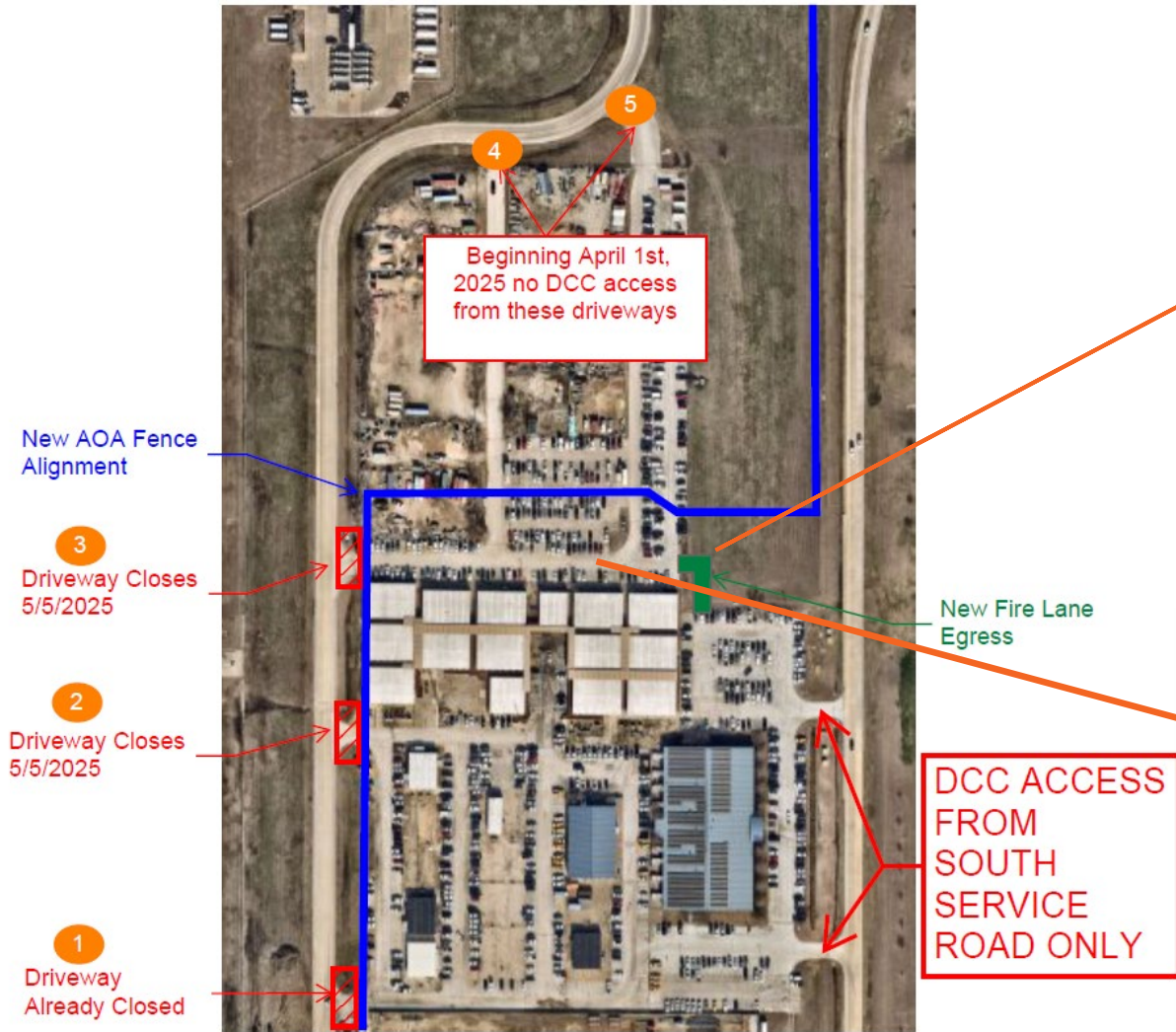


AGENDA

- | | | |
|--------------------------|--------------|---------------|
| ① COMMERCIAL DEVELOPMENT | ③ LANDSIDE | ⑤ CTA |
| ② AIRFIELD <<< | ④ FACILITIES | ⑥ AA PROJECTS |



DCC North Parking Lot Connection Construction



LANDSIDE PROGRAM





AGENDA

① COMMERCIAL DEVELOPMENT

② AIRFIELD

③ LANDSIDE <<<

④ FACILITIES

⑤ CTA

⑥ AA PROJECTS

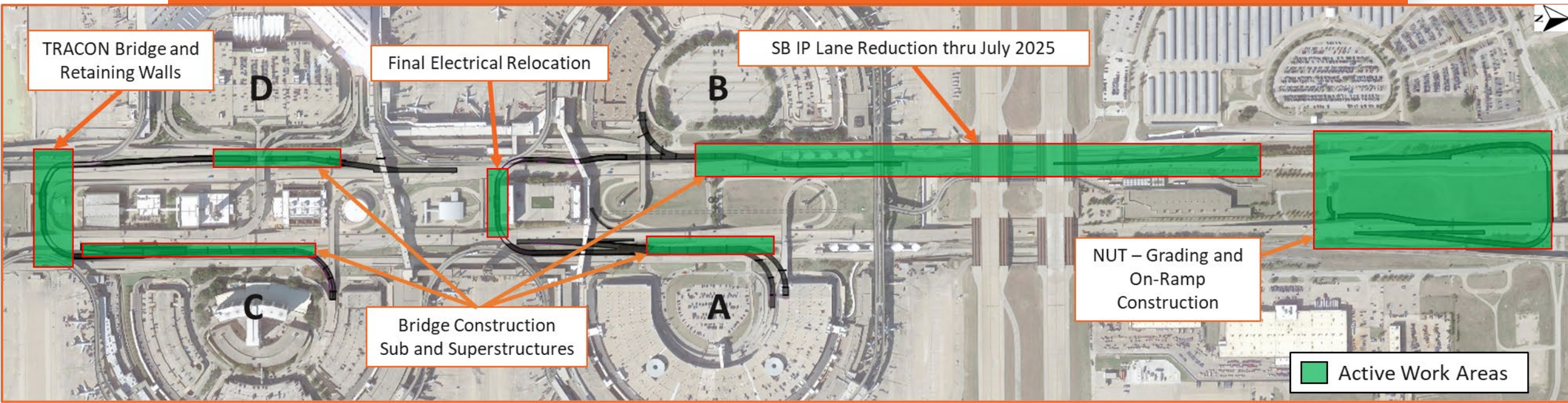
Projected Work to be Performed

- **High Mast Light Poles (HMLP)** project wide (*Removing existing poles, install new foundations and poles*)
- Bridge Construction at **Terminal D, B, A, and C** (*Drilled Shafts, Columns, Caps, and Span Beams*)
- **TRACON** bridge and wall reconstruction
- **North U-Turn** grading, pavement, retaining wall, and drainage work
- **SB IP Auxiliary Lane** construction ongoing

Impacts to Traffic and Operations

- Ongoing South Bound IP – Lane Reduction and Continue Construction of Right Exit to Terminal B
- SB IP Right Lane Reduction south of NUT
- Full Closure Service Road Crossunder #3 for Business Center Construction – **Sunday, April 6 | 5 Month Duration**

See additional detail on closures on next slide



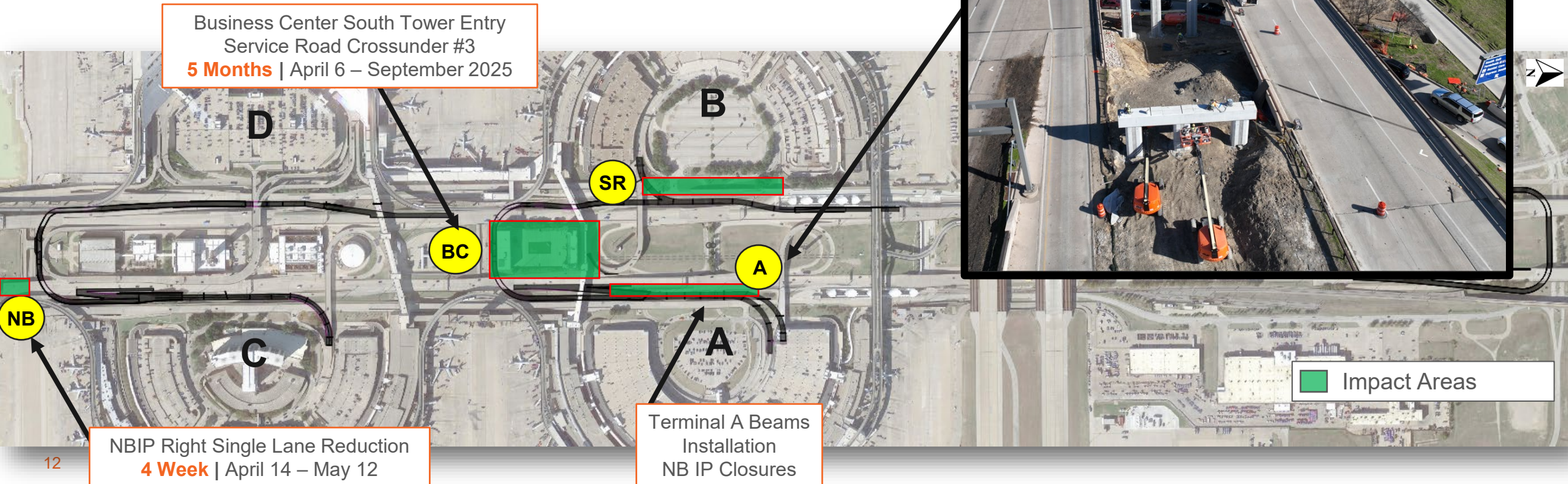


AGENDA

- | | | |
|--------------------------|----------------|---------------|
| ① COMMERCIAL DEVELOPMENT | ③ LANDSIDE <<< | ⑤ CTA |
| ② AIRFIELD | ④ FACILITIES | ⑥ AA PROJECTS |

Impacts to Traffic and Operations

- SR** Service Road SB Full Closure | **12 - 18 Hours** | Dates / Times Shown Next Slides
- A** NB IP Double RT Lane Closure | **9 Hours** | Dates / Times Shown Next Slides
- BC** Business Center – South Tower Access Closure | **5 Month Closure** | **April 6 – September 2025**
Impacts Coordinated with Commercial Development
- NB** NB IP – Single RT Lane Reduction and Ramp Closure | **4 Week** | **April 14 – May 12**





AGENDA

- | | | |
|--------------------------|----------------|---------------|
| ① COMMERCIAL DEVELOPMENT | ③ LANDSIDE <<< | ⑤ CTA |
| ② AIRFIELD | ④ FACILITIES | ⑥ AA PROJECTS |

SR

* SB Service Road Full Closure – Detour to West Airfield Drive

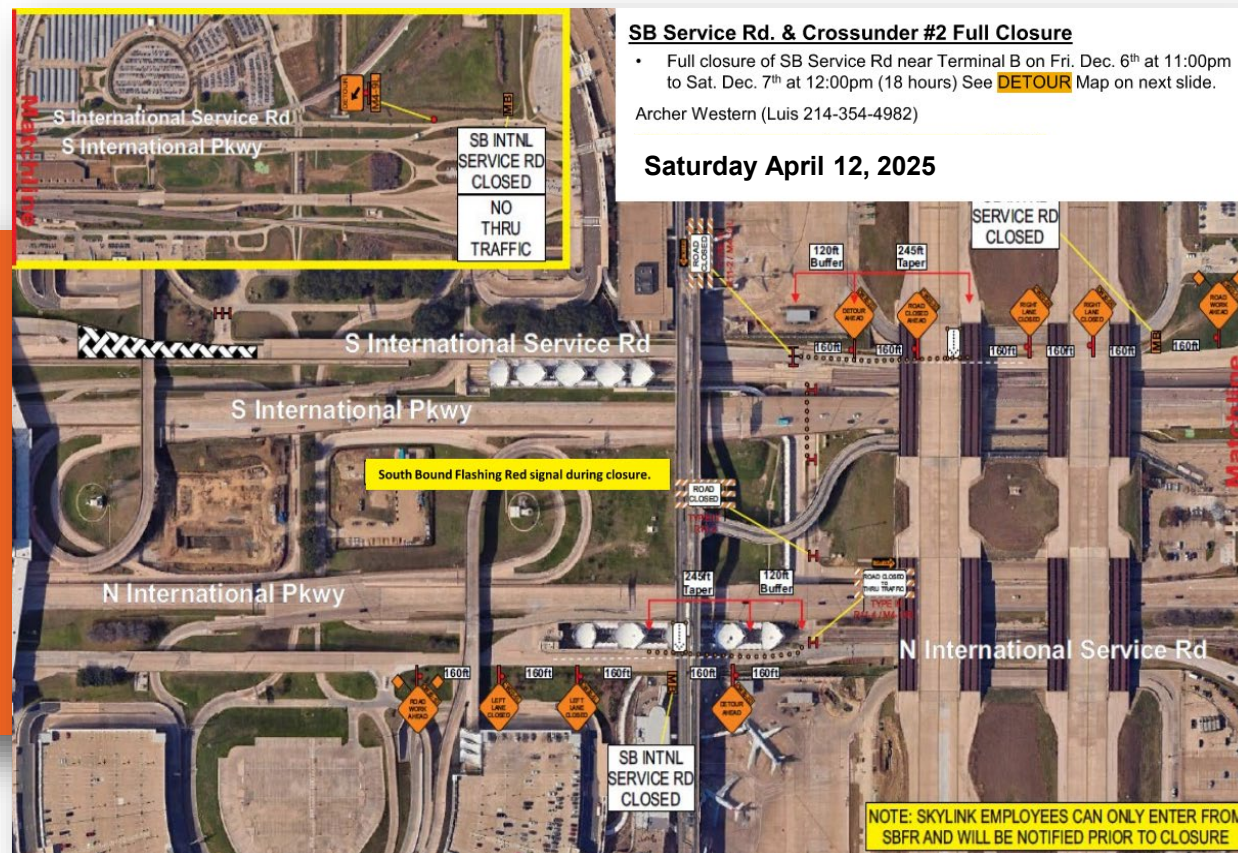
Saturday April 12 5:00AM – 10:00PM – Deck Pour

Saturday April 19 Contingency Date

Detour Route – Service Road Crossunder #2 Remains Open

***Coordinated and Published in RoadSTOP**

South Bound Service Road Full Closure - No Thru Traffic Beyond Service Road Cross Under #2



SB Service Rd. & Crossunder #2 Full Closure

- Full closure of SB Service Rd near Terminal B on Fri. Dec. 6th at 11:00pm to Sat. Dec. 7th at 12:00pm (18 hours) See **DETOUR** Map on next slide.
- Archer Western (Luis 214-354-4982)

Saturday April 12, 2025

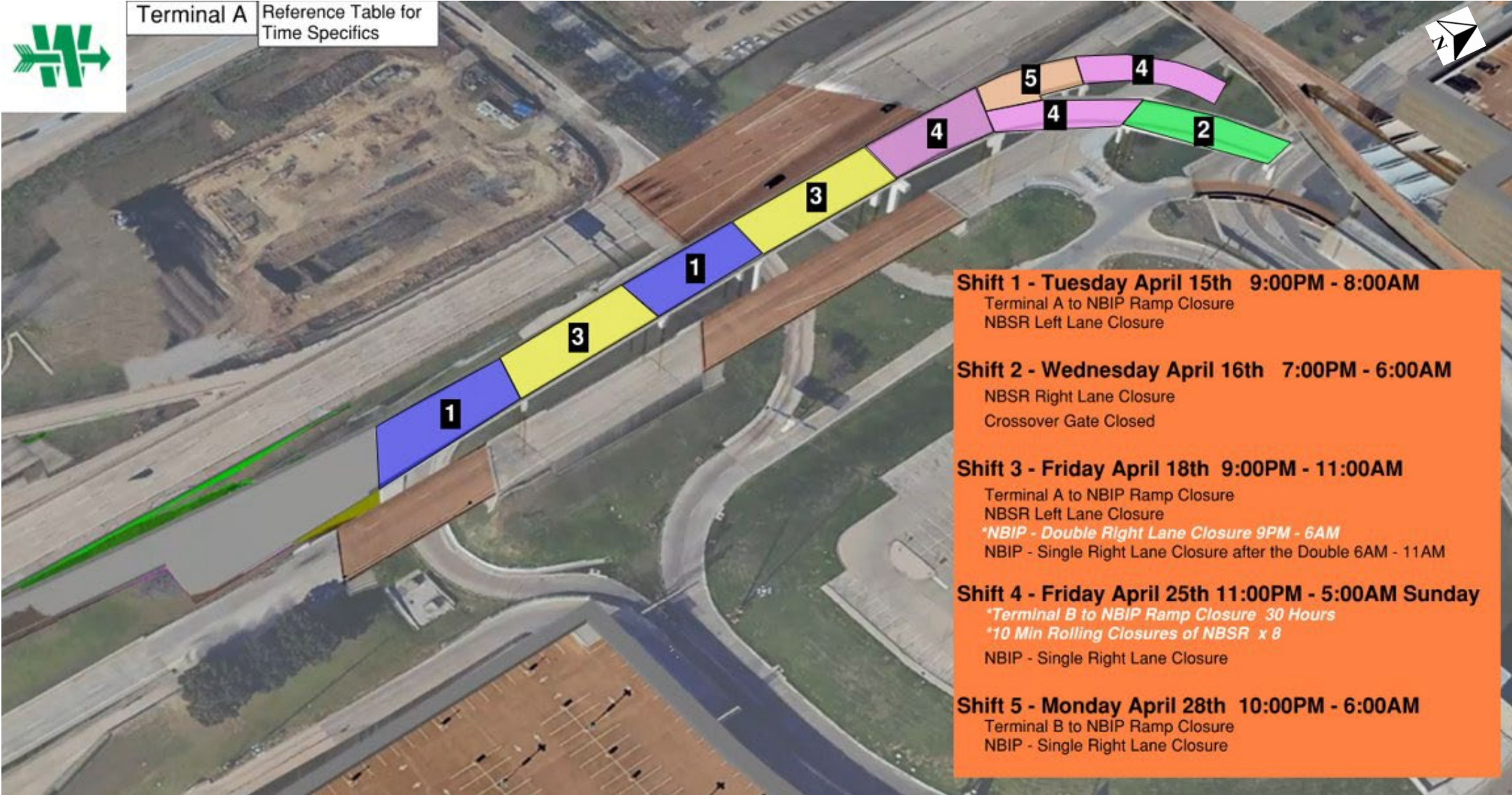


AGENDA

- ① COMMERCIAL DEVELOPMENT
- ② AIRFIELD
- ③ LANDSIDE <<<
- ④ FACILITIES
- ⑤ CTA
- ⑥ AA PROJECTS



A NB Exit to Terminal A Upcoming Impacts | Bridge Beams | April 15 – April 28





AGENDA

① COMMERCIAL DEVELOPMENT

② AIRFIELD

③ LANDSIDE <<<

④ FACILITIES

⑤ CTA

⑥ AA PROJECTS

BC

Service Road Crossunder #3 Full / Access to Business Center South Tower Full Closure

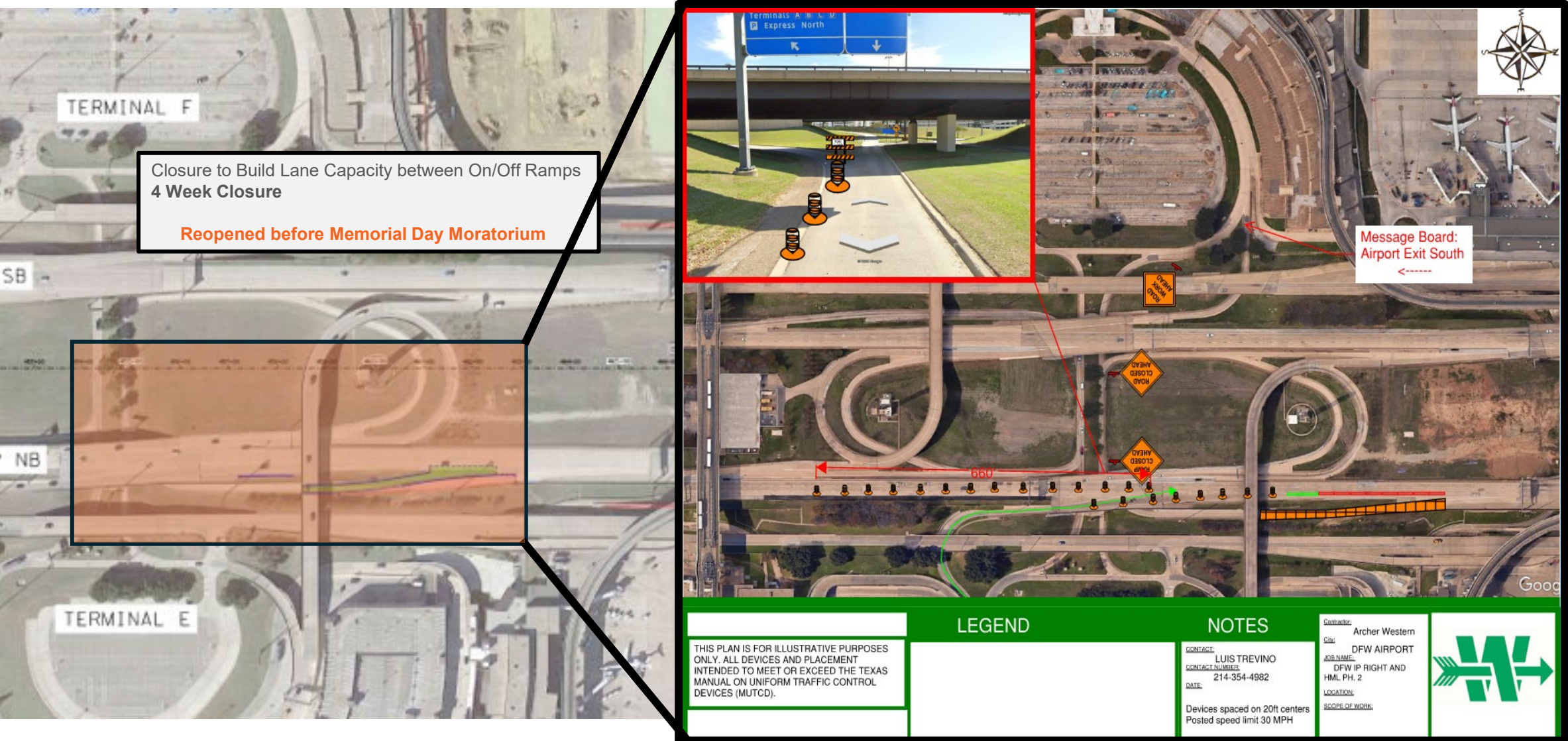
Service Road Crossunder #3
Business Center South Tower –
5 Month Closure

April 6, 2025 – September 2025

- Reconstruct Connecting Bridge and Supporting Wall System
- Widen and Lower the future alignment to make room for new SB to Terminal A
- Coordination with Commercial Development, Fire/DPS, and Building Tenants has occurred and on-going

NB

NBIP Single Lane Reduction AND Terminal F to NBIP Ramp Closure | 4 Weeks | April 14 – May 12





AGENDA

- | | | |
|--------------------------|----------------|---------------|
| ① COMMERCIAL DEVELOPMENT | ③ LANDSIDE <<< | ⑤ CTA |
| ② AIRFIELD | ④ FACILITIES | ⑥ AA PROJECTS |



Walls and Bridge System near TRACON
Service Road Crossunder #4

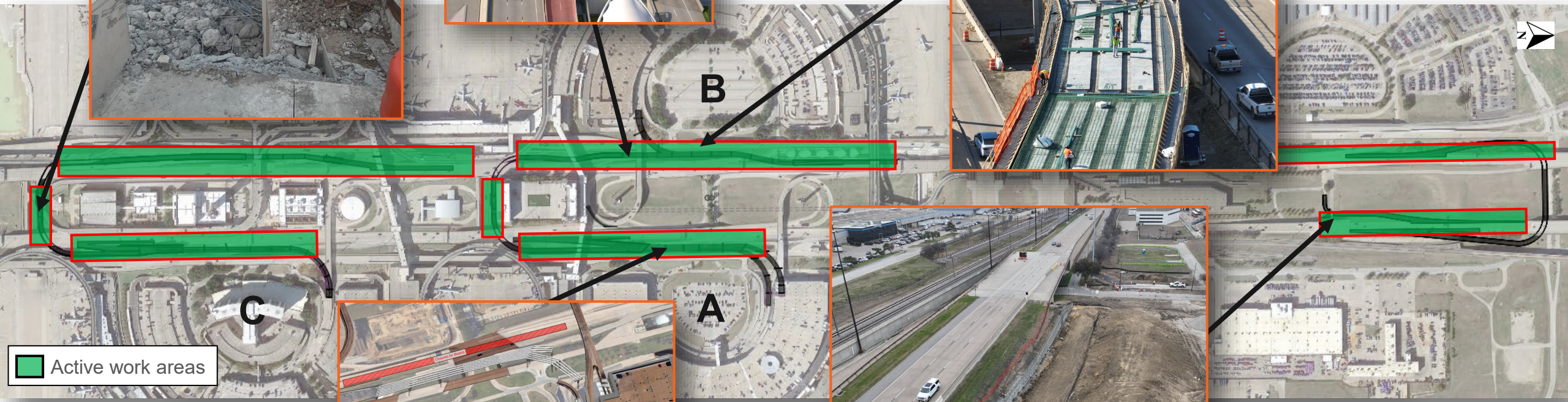
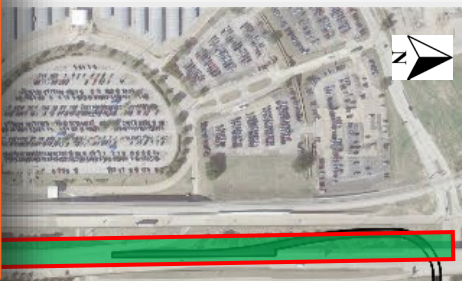
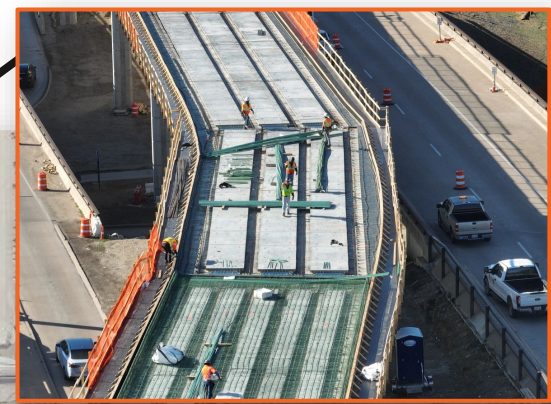


Projected Work to be Performed

- High Mast Lights – Underground duct bank connecting ONCOR Transformers
- All Project work areas opened up
- Terminal B Tie-in Prep Activities

Impacts

- South Bound IP RT Lane Reduction Terminal B to Service Road C.U. #1 – Ongoing
- Business Center South Tower Access Closure – Ongoing
- TRACON Detour / Service Road Crossunder #4 – Ongoing
- Various NB & SB Service Road 18 Hour closures for Bridge construction



Active work areas



Terminal A Deck – May - June



North Express Parking to NB IP Ramp Phasing - April



AGENDA

① COMMERCIAL DEVELOPMENT

② AIRFIELD

③ LANDSIDE <<<

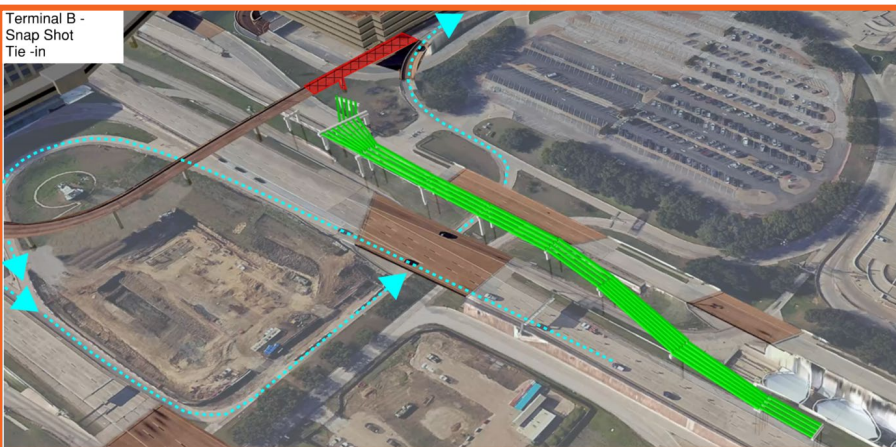
④ FACILITIES

⑤ CTA

⑥ AA PROJECTS



Terminal B -
Snap Shot
Tie-in



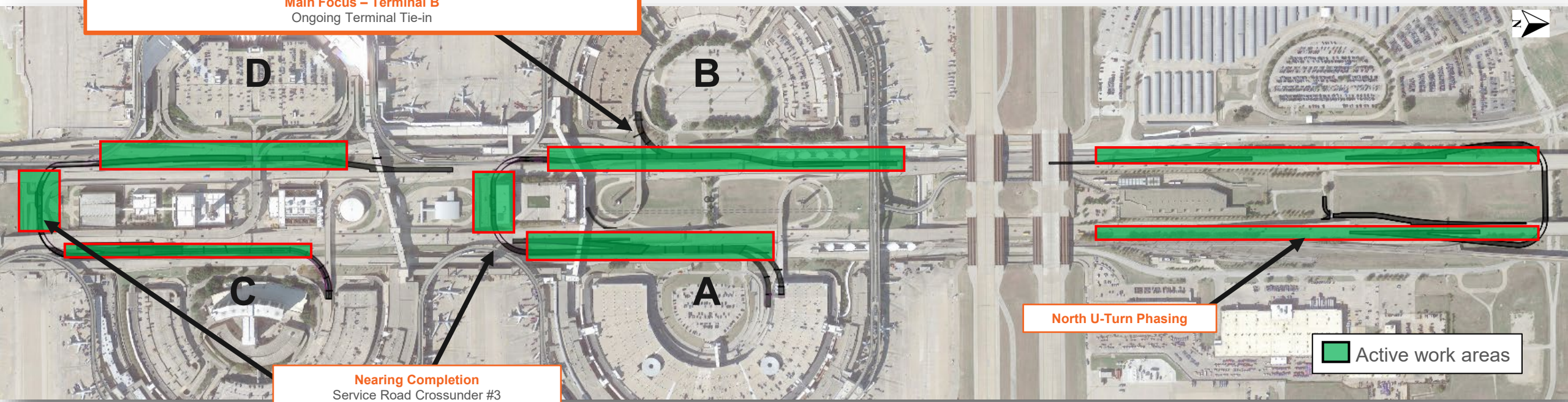
Main Focus – Terminal B
Ongoing Terminal Tie-in

Projected Work to be Performed

- **Focus on Terminal B – Performing 90-day Tie-In closure (August - October)**
- Heavy Focus on completion of Business Center Bridge and TRACON Bridge Rebuilds
- High Mast Lights – Powering up and nearing completion of duct-Banks
- North U-Turn Construction – Widening of IP for new ramp tie-ins will be complete
- Phase 1 Terminal A and C Bridge Superstructure – Will be complete

Impacts

- Daily/Nightly miscellaneous closures
- Required NB Single Lane closures for pavement tie-ins



Nearing Completion
Service Road Crossunder #3
Service Road Crossunder #4

North U-Turn Phasing

Active work areas



AGENDA

① COMMERCIAL DEVELOPMENT

② AIRFIELD

③ LANDSIDE <<<

④ FACILITIES

⑤ CTA

⑥ AA PROJECTS

Projected Work to be Performed

- Constructing Rails at Trigg Lake and Bear Creek bridges, installing reinforcing steel and Slip forming concrete
- Installing Electrical hardware for lighting
- Earthwork to address unsuitable materials area.

Impacts

- Material deliveries for Trigg Lake Bridge from 20th Street and IP SBSR
- Material deliveries for Bear Creek Bridge via 20th Street and SH 360 @ Harwood
- Drainage crews/materials access via 20th Street, SH 360 @ Harwood and IP SBSR



Unsuitable Material Area



Bear Creek Bridge SSTR Concrete Rail Preparation



AGENDA

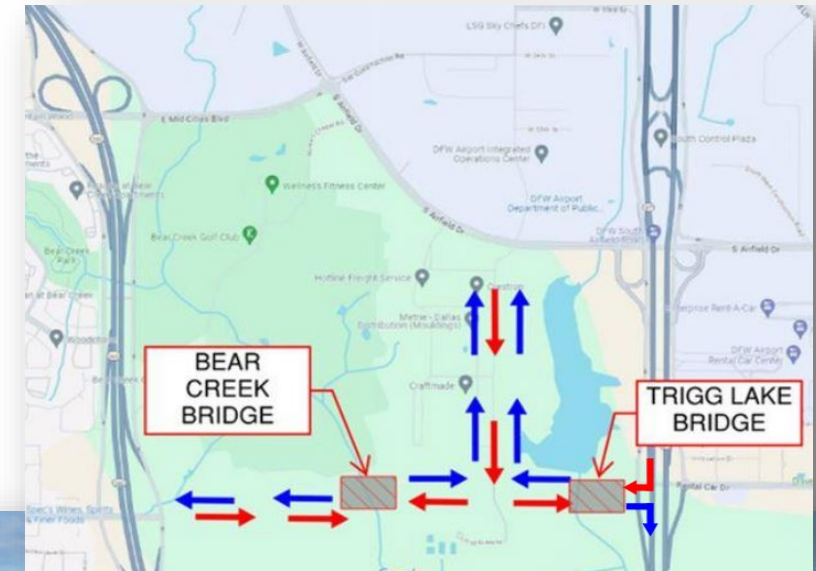
- ① COMMERCIAL DEVELOPMENT
- ② AIRFIELD
- ③ LANDSIDE <<<
- ④ FACILITIES
- ⑤ CTA
- ⑥ AA PROJECTS

Projected Work to be Performed

- Traffic and Pedestrian railing construction at both bridges and Emergency Spillway Culvert
- Complete drainage and utility work
- Begin significant earthwork grading operations
- Begin Continuously Reinforced Concrete Pavement (CRCP) scope

Impacts

- Material deliveries for Trigg Lake Bridge from 20th Street and IP SBSR
- Material deliveries for Bear Creek Bridge via 20th Street and SH 360 @ Harwood
- Earthwork and drainage crews/materials access via 20th Street, SH 360 @ Harwood and IP SBSR



Pedestrian Rail for Emergency Spillway Stored On-Site





AGENDA

- | | | |
|--------------------------|----------------|---------------|
| ① COMMERCIAL DEVELOPMENT | ③ LANDSIDE <<< | ⑤ CTA |
| ② AIRFIELD | ④ FACILITIES | ⑥ AA PROJECTS |

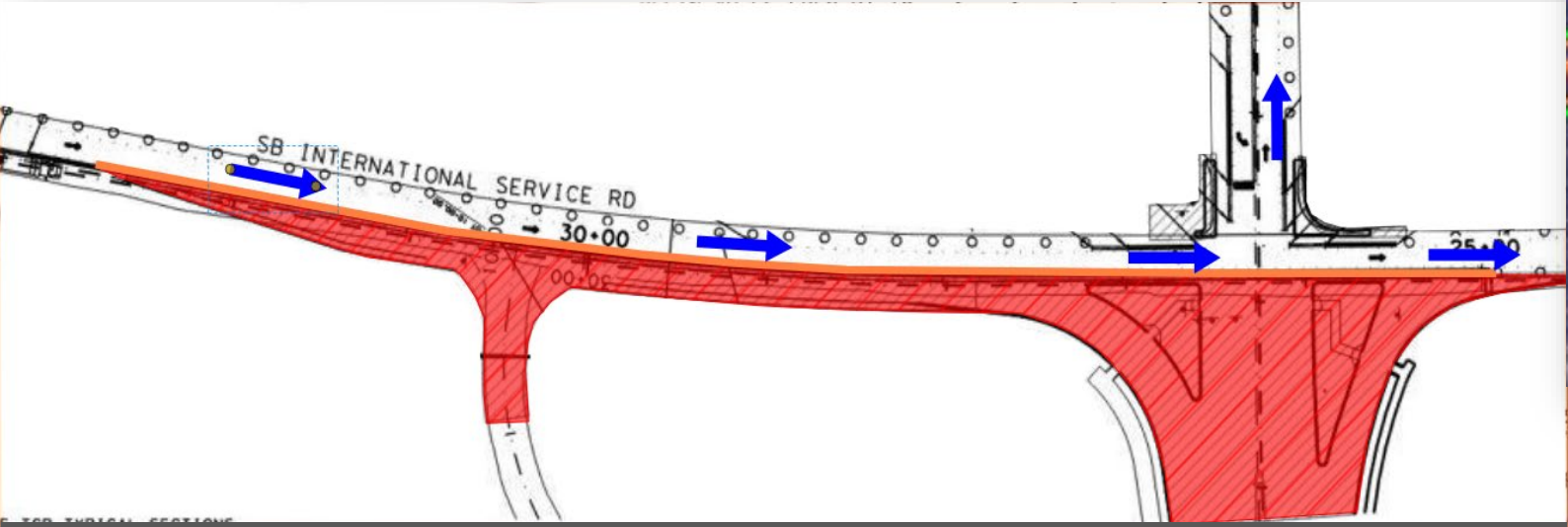
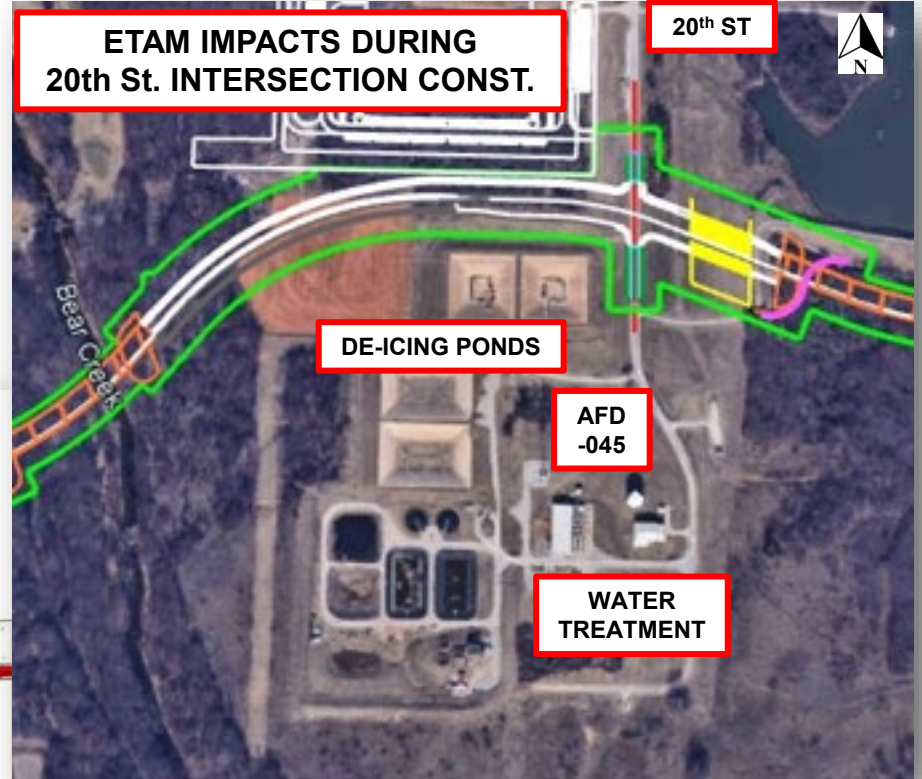


Projected Work Performed

- Completed - Trigg Lake and Bear Creek Bridges, Utilities and drainage installations
- Earthwork Continues – Final grading and subgrade treatments
- HMAC Paving scheduled to begin in Spring 2025
- Continue of Continuously Reinforced Concrete Pavement (CRCP) scope
- Continue remaining waterlines.

Impacts

- Traffic impacts to Southbound Service Road. Rental Car Drive exit ramp reduced to one lane
- Earthwork / Paving at 20th Street intersection will affect access to water treatment plant and deicing materials yards. Access will be maintained with minor delays.
- AFD-045 (SADF Storage) construction traffic will also be impacted by earthwork / paving



Lane Closure SB Service Road At Rental Car Drive



AGENDA

① COMMERCIAL DEVELOPMENT

② AIRFIELD

③ LANDSIDE <<<

④ FACILITIES

⑤ CTA

⑥ AA PROJECTS

Projected Work to be Performed - Phase 2

- Eastbound lanes opening to traffic **TODAY** (April 8)
- Close the westbound lanes and block access from parking lot and medians
- Begin demolition of westbound lanes

Impacts to Traffic and Operations

- W. 21st Street – Westbound lanes closed w/ bi-directional traffic on Eastbound lanes
- ATC Tower West will have full access
- W. Airfield Drive – Northbound right thru lane closed. Right turn lane open
- Truck traffic no longer detoured to 20th Street

**20th Street DETOUR FOR TRUCKS
NO LONGER MANDATORY**

**TRAFFIC SWITCH TO
EASTBOUND LANES
APRIL 8**



EB TRAFFIC ON PHASE 1 PAVEMENT AT WEST ATC TOWER



NB W AIRFIELD DRIVE – RIGHT LANE CLOSED WITH RIGHT TURN TO 21ST STREET



AGENDA

① COMMERCIAL DEVELOPMENT

② AIRFIELD

③ LANDSIDE <<<

④ FACILITIES

⑤ CTA

⑥ AA PROJECTS

Project Work To Be Performed

- Complete demolition of the westbound lanes
- Complete grading and subgrade stabilization
- Begin paving operations

Impacts

- W. 21st Street – Westbound lanes closed w/ bi-directional traffic on Eastbound lanes
- ATC Tower West will have full access
- W Airfield Drive – Northbound right thru lane close. Right turn lane open





AGENDA

- ① COMMERCIAL DEVELOPMENT
- ② AIRFIELD
- ③ LANDSIDE <<<
- ④ FACILITIES
- ⑤ CTA
- ⑥ AA PROJECTS

Projected Work to be Performed - Phase 2

- Paving the closed westbound lanes and center medians

Impacts to Traffic and Operations

- W. 21st Street – Westbound lanes closed w/ bi-directional traffic on Eastbound lanes
- AA Hangers access shifted during pavement replacement
- W. Airfield Drive – Northbound right thru lane closed

Substantial Completion: August 1, 2025





AGENDA

- | | | |
|--------------------------|----------------|---------------|
| ① COMMERCIAL DEVELOPMENT | ③ LANDSIDE <<< | ⑤ CTA |
| ② AIRFIELD | ④ FACILITIES | ⑥ AA PROJECTS |

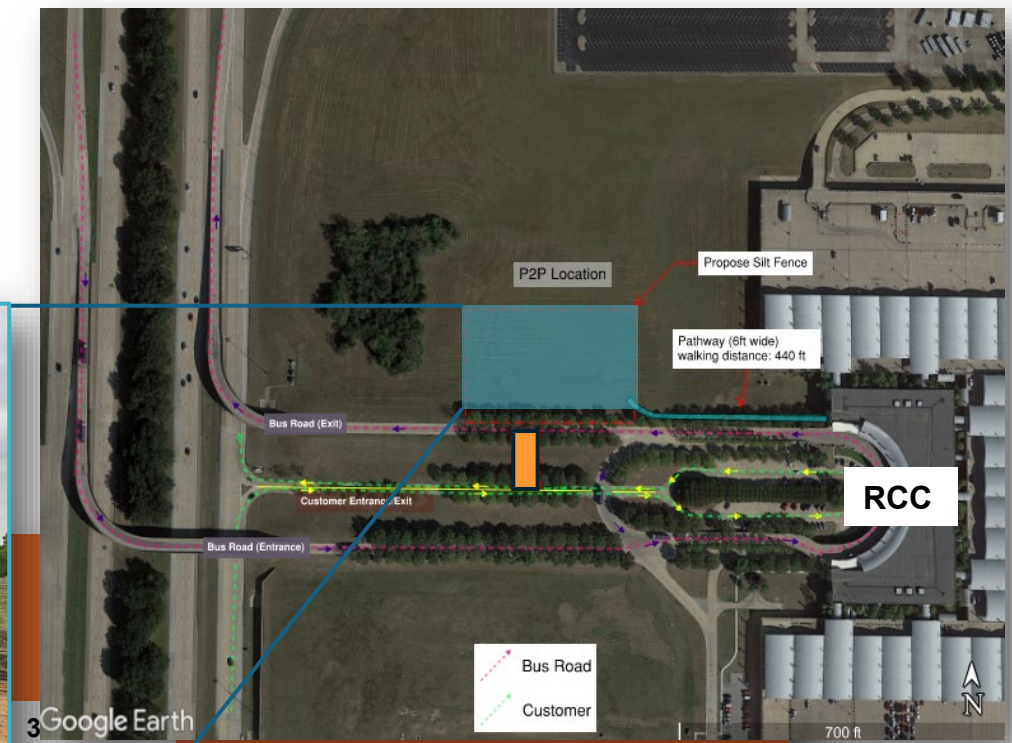
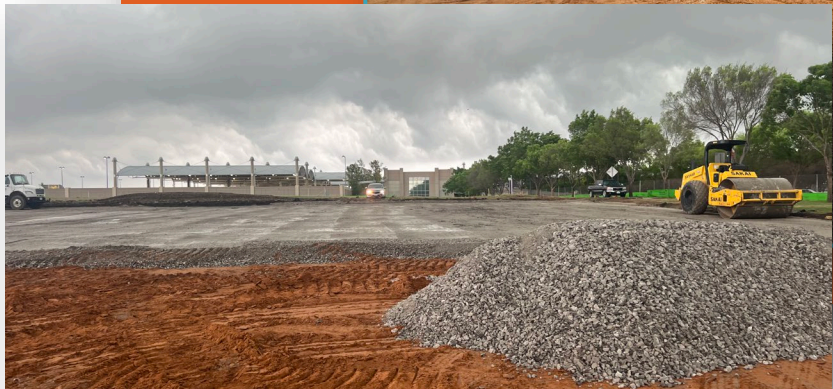


Projected Work to be Performed

- Work In progress: Finish Flex base placement, electrical conduit, water line installation, light pole foundations, cut out center median crossing

Impacts to Traffic and Operations

- Traffic Controls are placed adjacent to E 38th St. for construction of the crossover
- Bus Road Exit will be reduced on both sides while maintaining a 12' lane minimum
- Flaggers present to guide End Dump trucks





AGENDA

- | | | |
|--------------------------|----------------|---------------|
| ① COMMERCIAL DEVELOPMENT | ③ LANDSIDE <<< | ⑤ CTA |
| ② AIRFIELD | ④ FACILITIES | ⑥ AA PROJECTS |



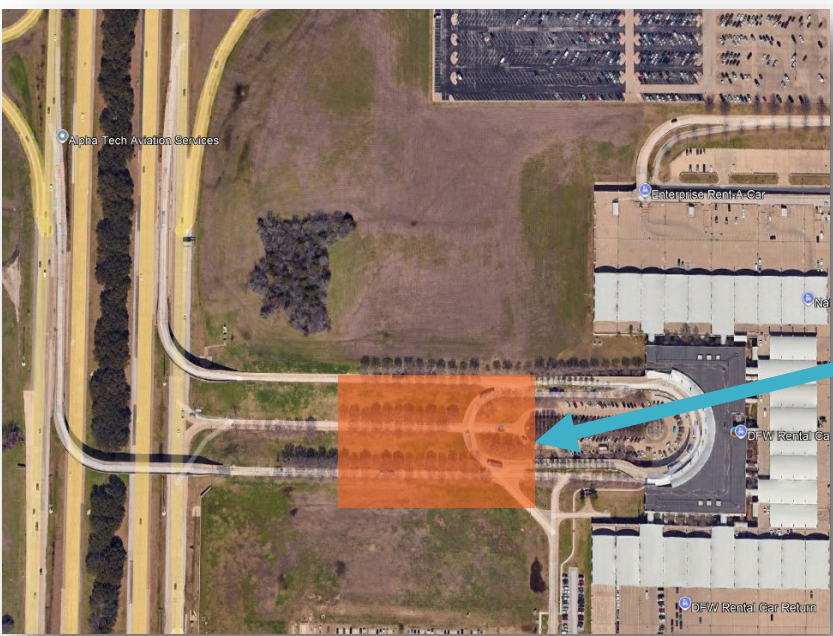
Projected Work to be Performed

- Site/Civil Work Ongoing – Rebar, concrete paving, irrigation, striping, traffic signals, roadside signage, light pole installation, and sidewalk

Impacts to Traffic and Operations

- Traffic Control are placed adjacent to E 38th St. for construction of the crossover
- Bus Road Exit will be reduced on both sides while maintaining a 12' lane minimum
- Flaggers present to guide End Dump trucks
- Remove Traffic Control Devices

Substantial Completion: End of July 2025



FACILITIES PROGRAM





AGENDA

- ① COMMERCIAL DEVELOPMENT
- ② AIRFIELD
- ③ LANDSIDE
- ④ FACILITIES <<<
- ⑤ CTA
- ⑥ AA PROJECTS



Terminal D, Phase 3

Lobby - T7

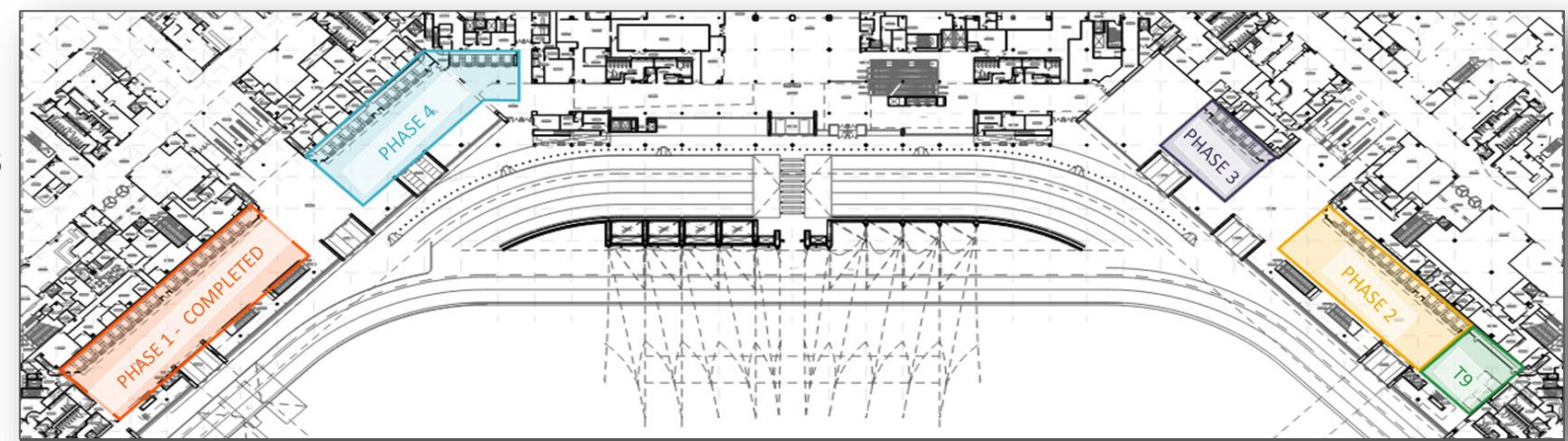
- Construction for temporary screening Lobby – T7 Work Started March 17
- TSA relocation of CT-80s (from T9 to T7) – week of April 14, 2025

FIS

- Temporary Screening FIS- On hold pending funding approval
- CT-80 delivery to FIS – On Hold

Terminal A, POD C

- Commissioning and Testing Ongoing
- No temporary screening required



Terminal D Phasing Map



Terminal D – North Passive Matrix



Terminal A EDS Machine



AGENDA

① COMMERCIAL DEVELOPMENT

② AIRFIELD

③ LANDSIDE

④ FACILITIES <<<

⑤ CTA

⑥ AA PROJECTS

Terminal A, POD C

- Go Live: May 15, 2025
- No temporary screening required

Terminal C, Phase 1

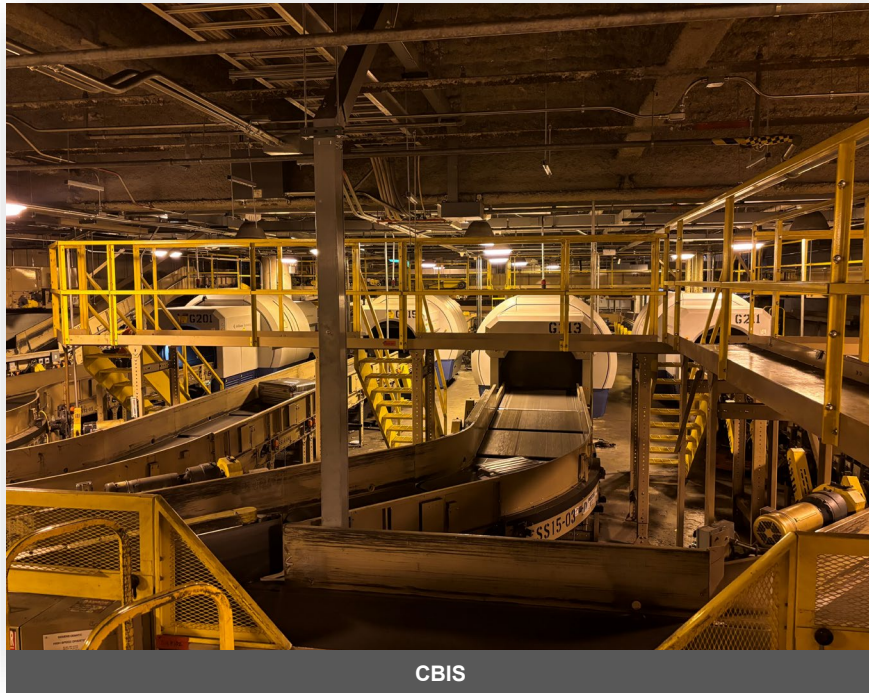
- Construction for temporary screening – **April 2025**
- Temporary screening North Lobby – Start June 2025

Terminal D, T9 Ticket Counters

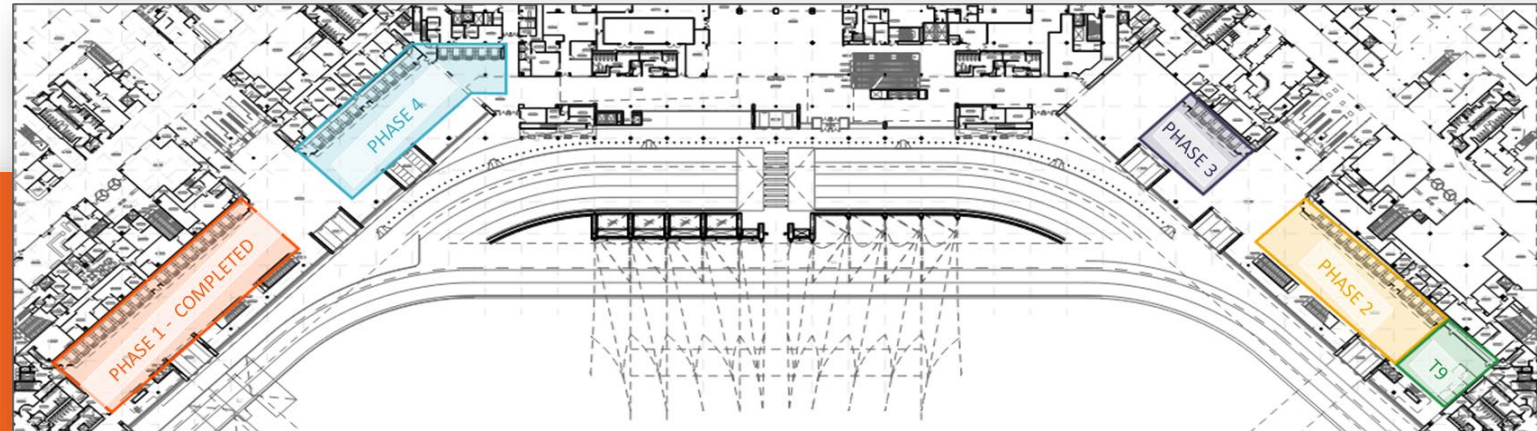
- Concourse level work on-going (SSBD Install late July 2025)

Terminal D, Phase 3 – T7 and FIS

- TSA temporary screening operations – Pending FIS Decision (Start May/June 2025)



CBIS



Terminal D Phasing Map





AGENDA

- ① COMMERCIAL DEVELOPMENT
- ② AIRFIELD
- ③ LANDSIDE
- ④ FACILITIES <<<
- ⑤ CTA
- ⑥ AA PROJECTS



Terminal D, T9 Ticket Counters

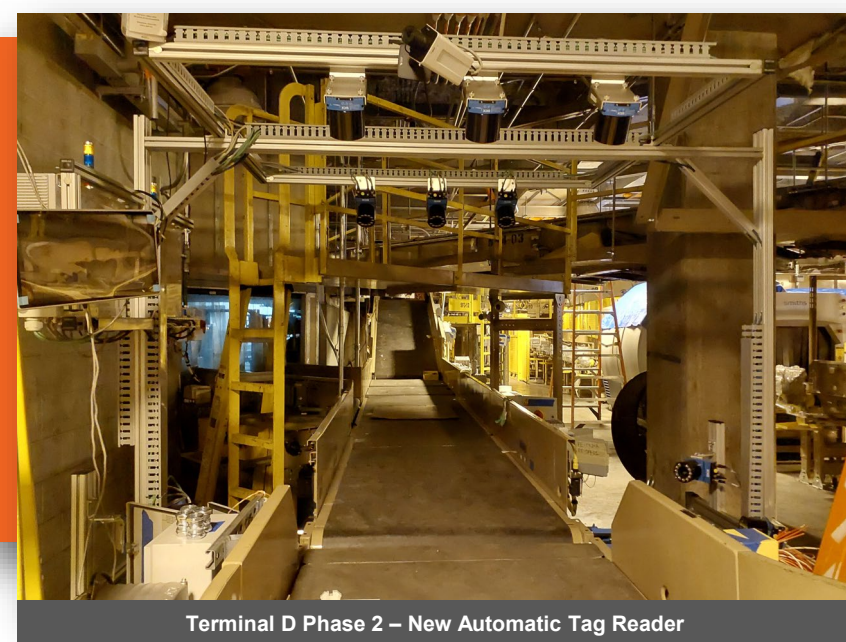
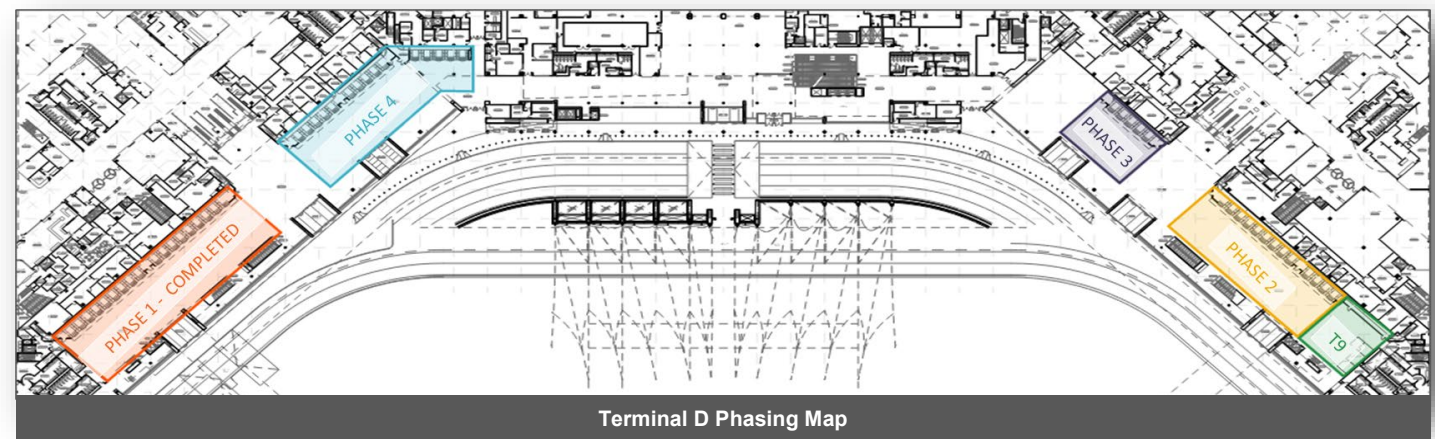
- Substantial Completion – September

Terminal D, Phase 3 – T7 and FIS

- Recap work (ramp level) - Ongoing

Terminal C, Phase 1

- Temporary screening North Lobby – Ongoing
- Recap work (ramp level) - Ongoing





AGENDA

- ① COMMERCIAL DEVELOPMENT
- ② AIRFIELD
- ③ LANDSIDE
- ④ FACILITIES <<<
- ⑤ CTA
- ⑥ AA PROJECTS

HARP 1 – Three Restroom Rehab: E34, B19, A24

- **E34** – Ceiling grid installed, sinks and plumbing fixtures in
- **B19** – Tiling completed. Ceilings in and plumbing fixtures underway
- **A24** – Demo 95% complete and Mold Remediation ongoing as of March 31
 - CTX (Baggage Scanners) scaffolding protection began 3/28

Restrooms Out of Service Schedule

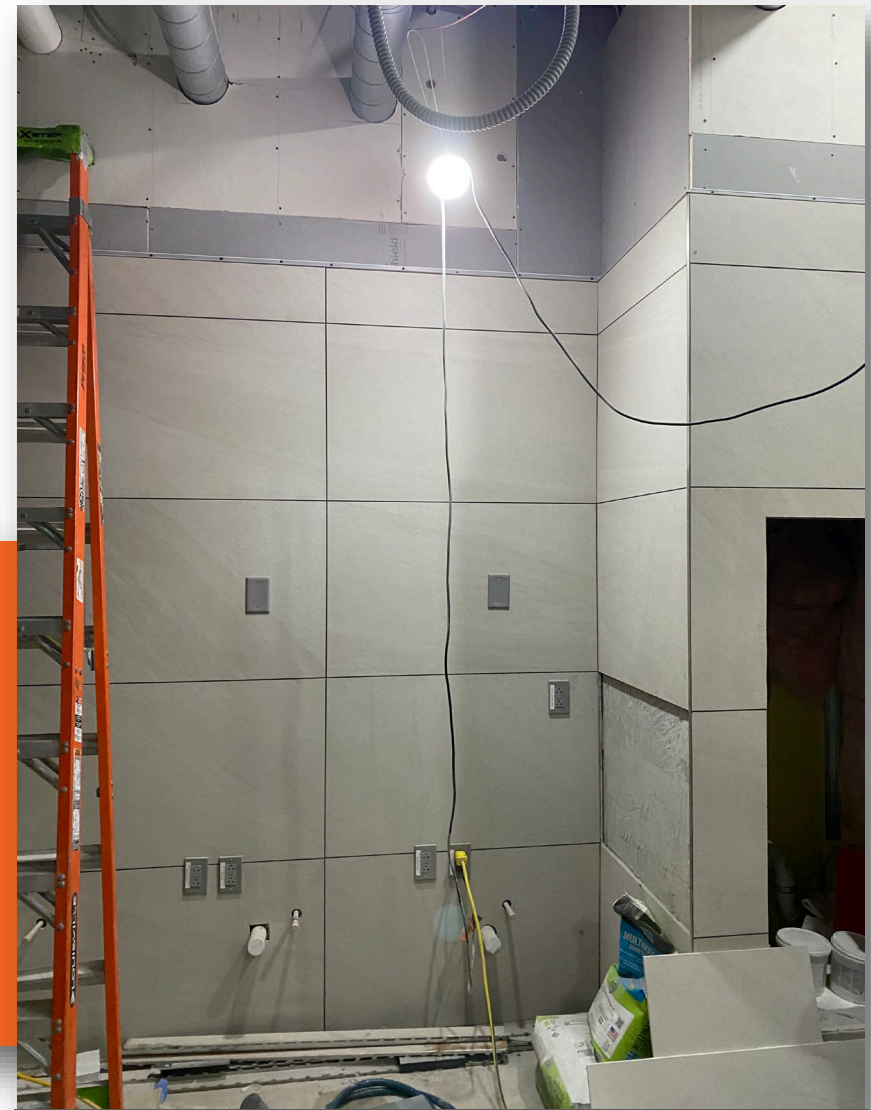
- **E34:** October 2024 – **May 21, 2025**
- **B19:** November 2024 – **May 21, 2025**
- **A24:** February 2025 – September 2025

HARP 3 – Four Restroom Rehab: E7, A38, D36, A18

- **Concourse Level:** Mockup corrections complete April 15, A38 in Design Development, D36 – 35% Design review on April 11, Expedite E7 design
- **Ramp Level:** Jones CO contract and NTP issued, Coordinating schedule with concourse



Concept of Proposed Restroom



B19 Wall Tile



AGENDA

- | | | |
|--------------------------|------------------|---------------|
| ① COMMERCIAL DEVELOPMENT | ③ LANDSIDE | ⑤ CTA |
| ② AIRFIELD | ④ FACILITIES <<< | ⑥ AA PROJECTS |



HARP 1 – Three Restroom Rehab: E34, B19, A24

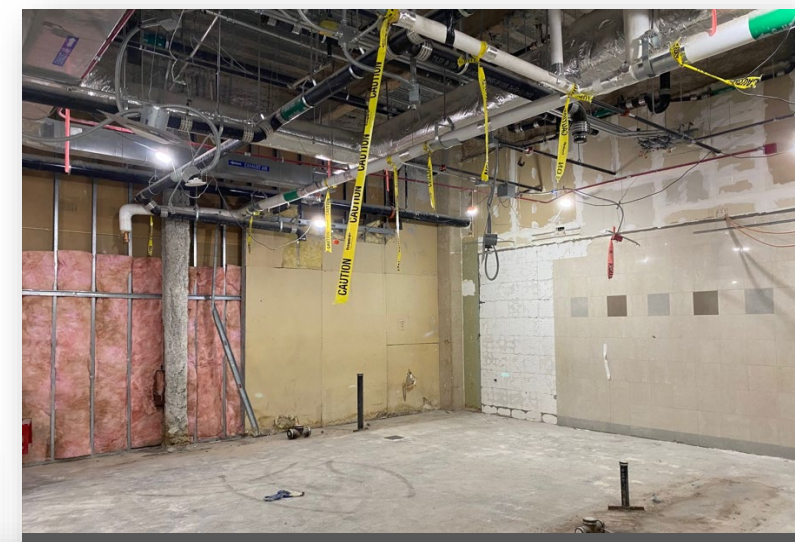
- **E34:** Returned to Service **May 21, 2025**
- **B19:** Returned to Service **May 21, 2025**
- **A24:** February 2025 – September 2025

HARP 3 – Four Restroom Rehab: E7, A38, D36, A18

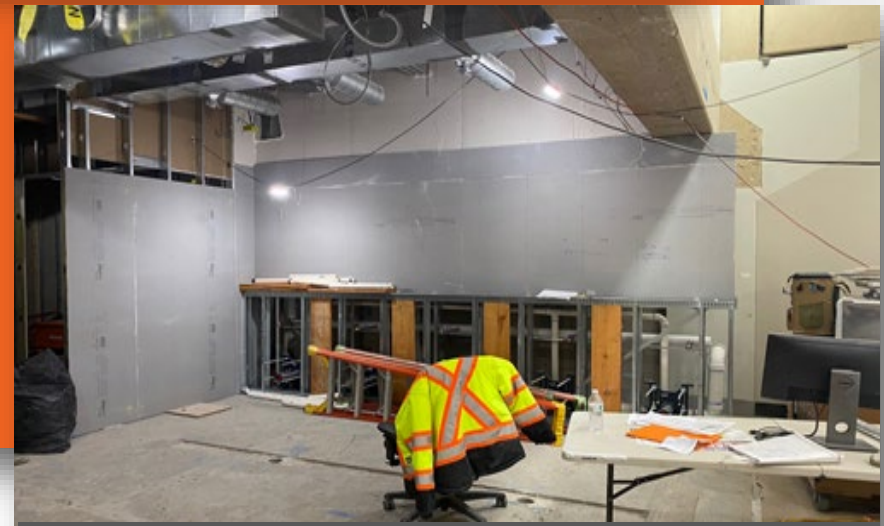
- **Concourse Level:** Design completed for A38, E7 for permit release, D36 & A18 ongoing design
- **Ramp Level:** Coordination to Start Work with Concourse Level - July 2025



Concept of Proposed Restroom



A24 Abatement/Demo in Progress



Drywall Install in Progress



AGENDA

- ① COMMERCIAL DEVELOPMENT
- ② AIRFIELD
- ③ LANDSIDE
- ④ FACILITIES <<<
- ⑤ CTA
- ⑥ AA PROJECTS

HARP 1 – Three Restroom Rehab: E34, B19, A24

- **A24:** Returned to Service **September 2025**

Restrooms Out of Service Schedule

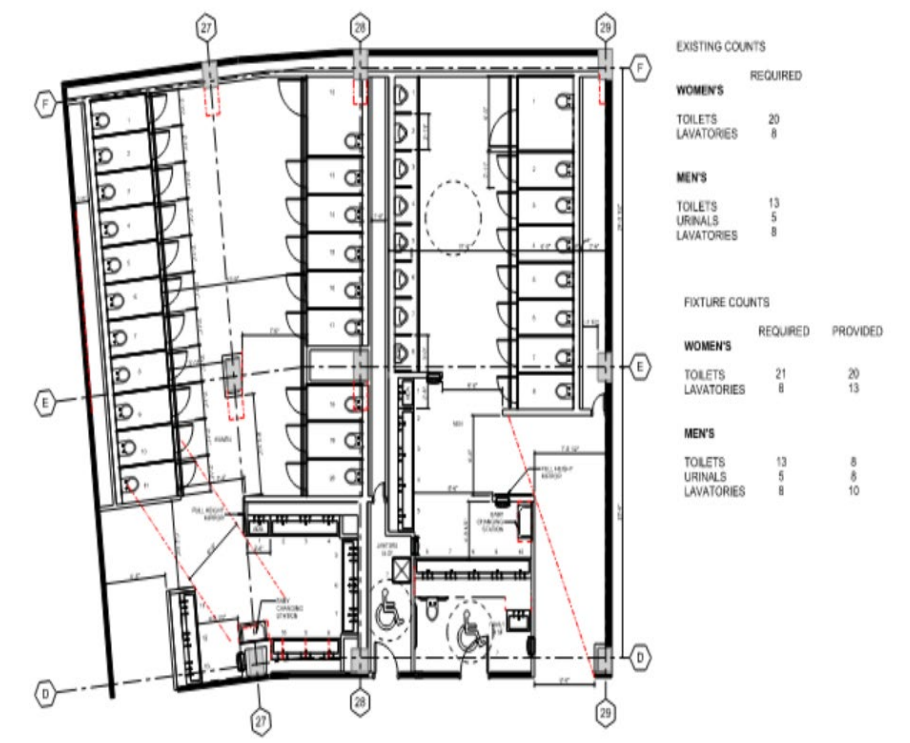
- **E7:** September 2025 – January 2025
- **A38:** October 2025 – February 2026
- **D36:** November 2025 – March 2026

HARP 3 – Four Restroom Rehab: E7, A38, D36, A18

- **Concourse Level:** Begin Construction for E7 and A38; D36 for permit release, A18 ongoing design.
- **Ramp Level:** Construction ongoing.



Concept of Proposed Restroom



E7 prelim layout in progress



AGENDA

- | | | |
|--------------------------|------------------|---------------|
| ① COMMERCIAL DEVELOPMENT | ③ LANDSIDE | ⑤ CTA |
| ② AIRFIELD | ④ FACILITIES <<< | ⑥ AA PROJECTS |

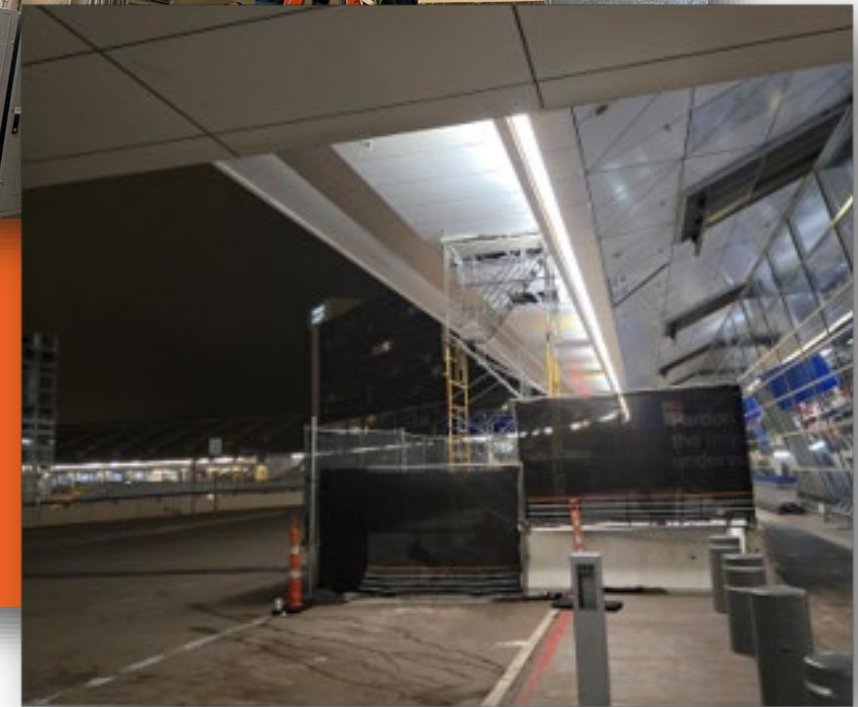


Terminal D Ramp Level

- Ramp Level Gatehouse Mechanical Rooms (Gates #33 – 40): March 8 – June 25, 2025

Terminal D

- Departure Level Curbside Overhang
 - 4 – 6 weeks per phase x 8 phases, working outside in, 1 segment at a time
- Phase 4: March 31 – May 21, 2025
 - Inside terminal sprinkler connections
 - Pause for Memorial Day Moratorium





AGENDA

- | | | |
|--------------------------|------------------|---------------|
| ① COMMERCIAL DEVELOPMENT | ③ LANDSIDE | ⑤ CTA |
| ② AIRFIELD | ④ FACILITIES <<< | ⑥ AA PROJECTS |

Terminal D Ramp Level

- Ramp Level Gatehouse Mechanical Rooms (Gates #33 – 40): March 8 – June 25, 2025

Terminal D

- Departure Level Curbside Overhang
 - Phase 4: March 31 – May 21, 2025
 - Inside Terminal Sprinkler Connections
 - Pause for Memorial Day Moratorium
 - Phase 5: May 28 – June 25, 2025 (Schedule Pending final Stakeholder Confirmation)
 - Phase 6: (Anticipated after Independence Day Moratorium) July 9 – August 27, 2025





AGENDA

① COMMERCIAL DEVELOPMENT

② AIRFIELD

③ LANDSIDE

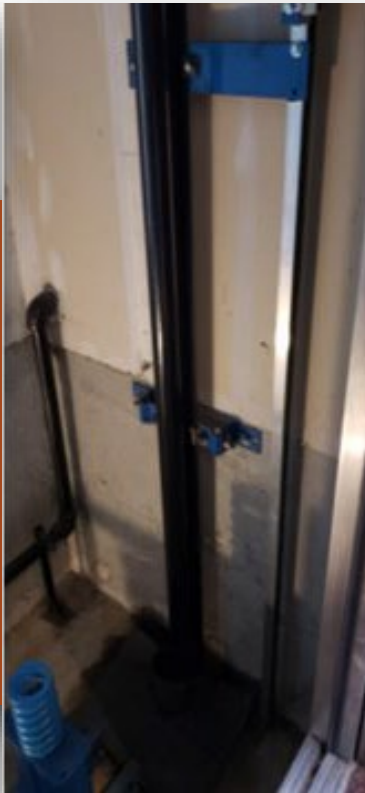
④ FACILITIES <<<

⑤ CTA

⑥ AA PROJECTS

Elevator #3 Refurbishment | April – July 2025

- Installation of new structural steel supports
- Installation of Elevator Machinery and Elevator Cab activities





AGENDA

- ① COMMERCIAL DEVELOPMENT
- ② AIRFIELD
- ③ LANDSIDE
- ④ FACILITIES <<<
- ⑤ CTA
- ⑥ AA PROJECTS



Elevator #4 Demolition & Refurbishment | July – October 2025

- Installation of new structural steel supports
- Installation of Elevator Machinery and Elevator Cab activities

Elevators #1 & #2 Decommission | October – December 2025

Substantial Completion: December 2025





AGENDA

- ① COMMERCIAL DEVELOPMENT
- ② AIRFIELD
- ③ LANDSIDE
- ④ FACILITIES <<<
- ⑤ CTA
- ⑥ AA PROJECTS



System Demonstration:

- System Demonstration: Operating under new system since February 6
 - Currently at Day 0 – Issues are to be expected up front
 - Software Update installed March 23
 - Next Install: April 25 (continuous process – discover, study, install fixes)
 - Need 30 consecutive issue free days once restart System Demonstration clock

Substantial Completion: July 2025

Final Completion: September 2025





AGENDA

- | | | |
|--------------------------|------------------|---------------|
| ① COMMERCIAL DEVELOPMENT | ③ LANDSIDE | ⑤ CTA |
| ② AIRFIELD | ④ FACILITIES <<< | ⑥ AA PROJECTS |



Phase 1 - Gates A15 & A33 (and rework at A19)

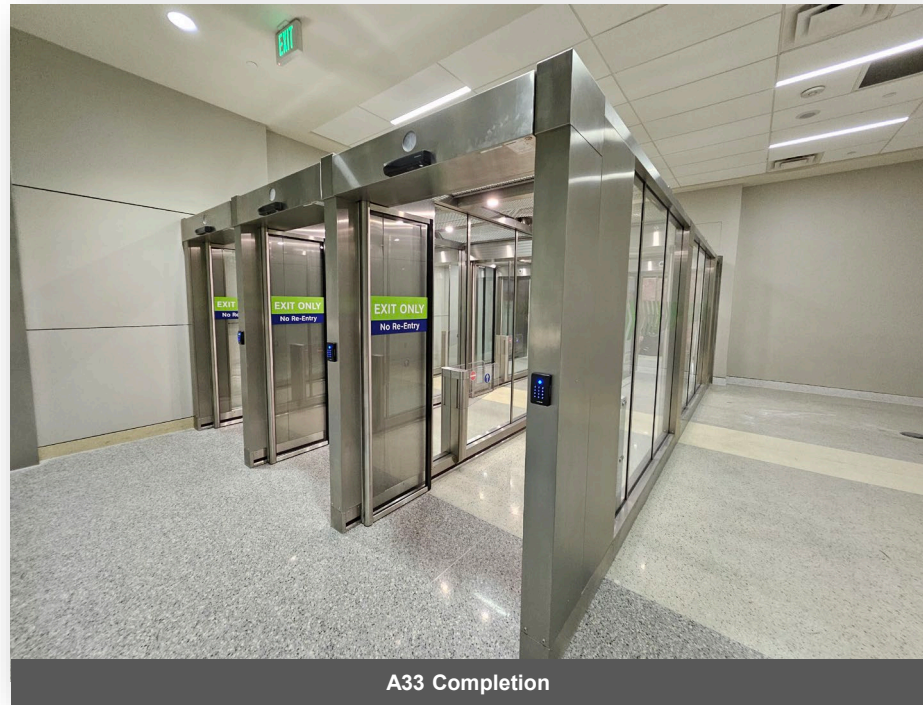
- A33: **Complete March 10**
- A15: Temp Closure March 12, 2025 – June 5, 2025
- A19 Rework (night work): June 7-8, 2025

Substantial Completion: June 2025

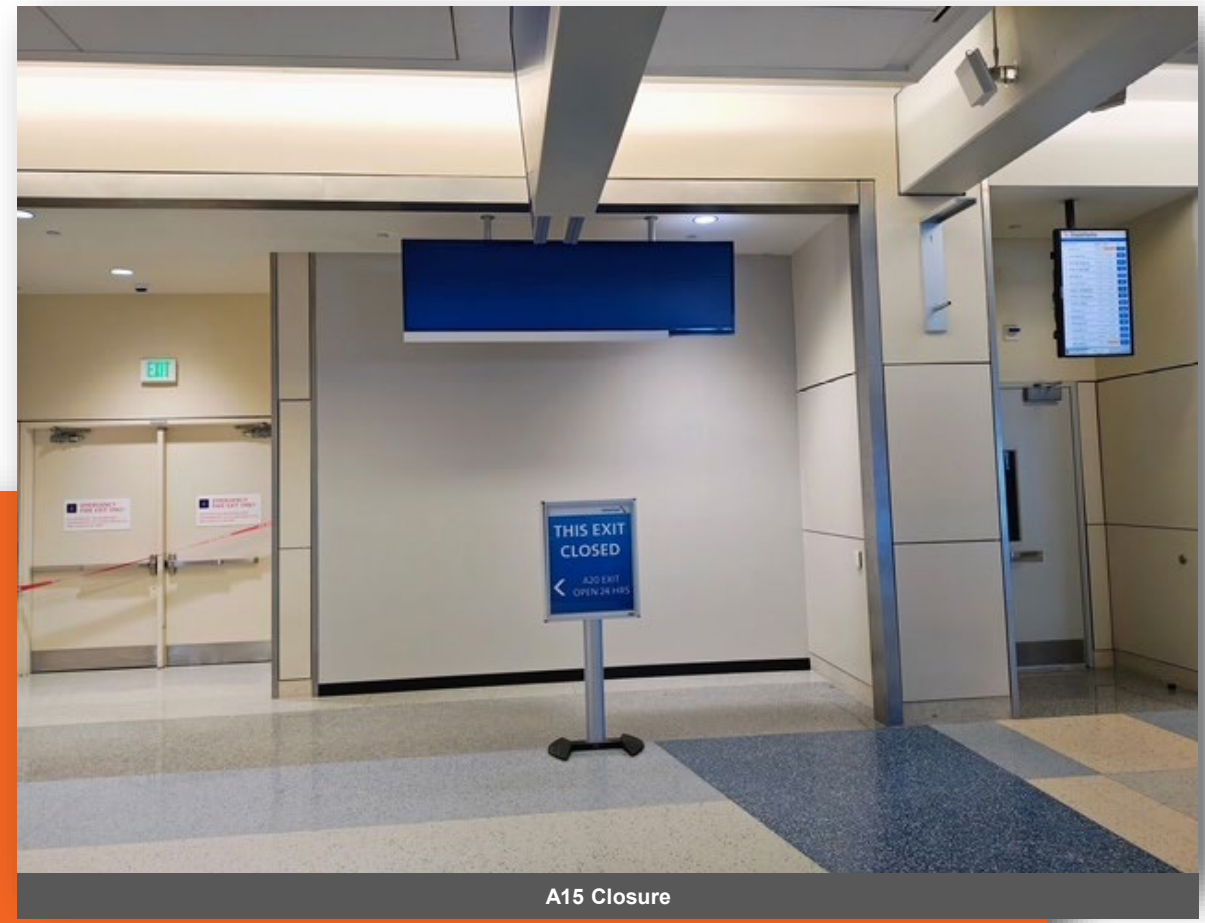
Phase 2 - Gates B7 & B28

- 100% Design Completed: December 2024
- Solicitation: February 16, 2025
- Bid Opening: April 2, 2025
- June OBA
- Projected Construction NTP: July 10, 2025

Substantial Completion: February 2026

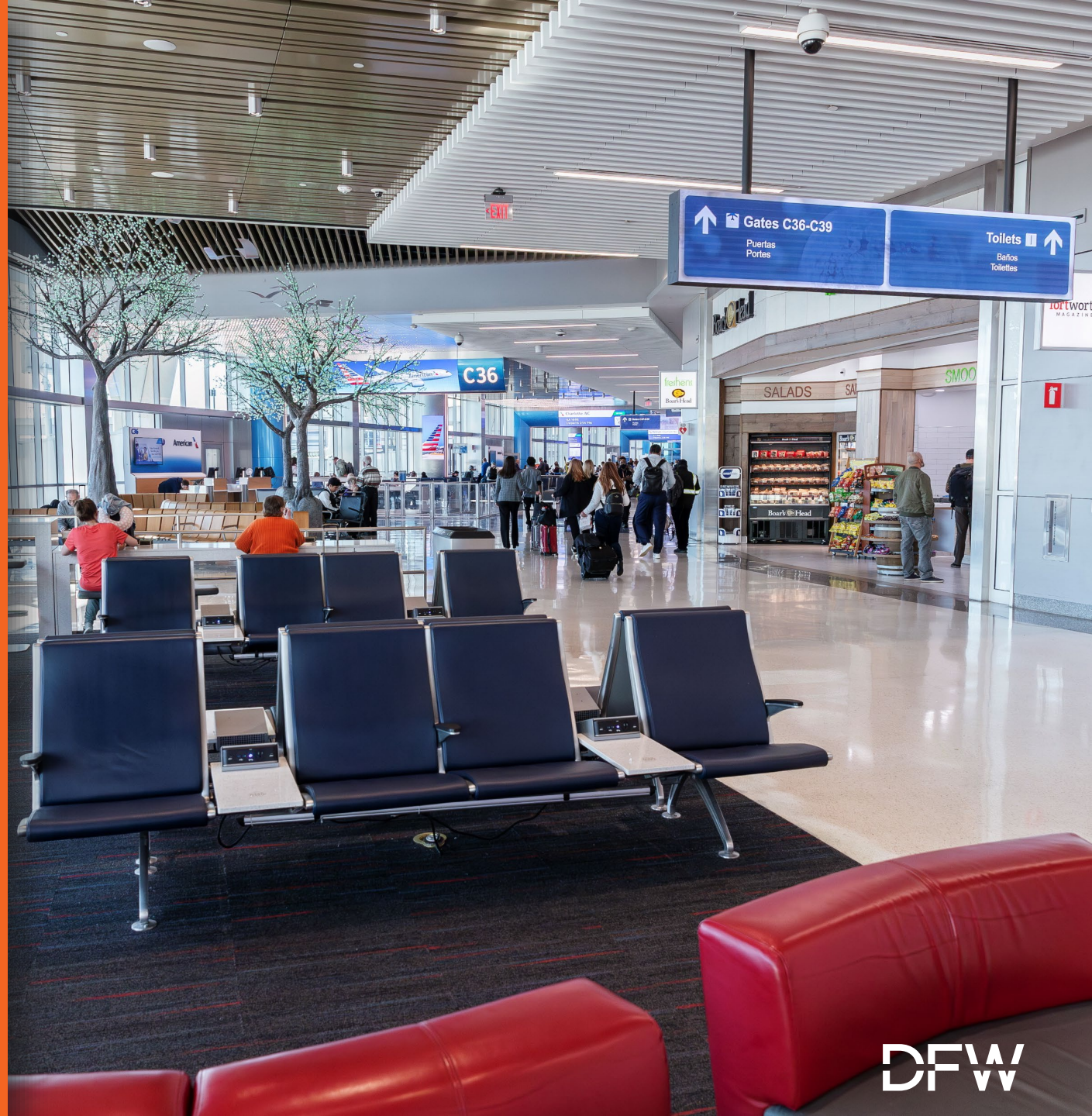


A33 Completion



A15 Closure

CTA EXPANSION PROGRAM





AGENDA

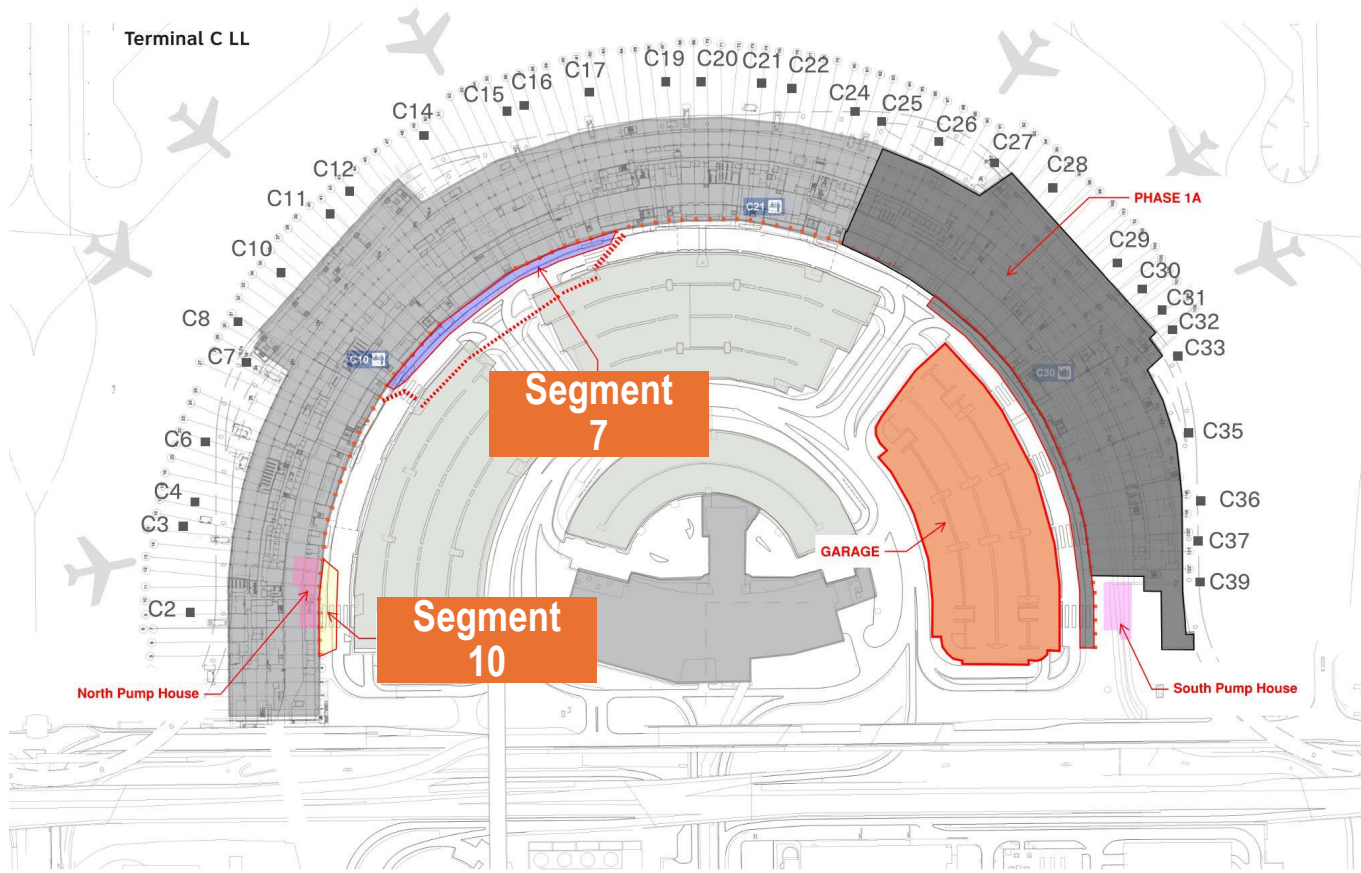
- | | | |
|--------------------------|--------------|---------------|
| ① COMMERCIAL DEVELOPMENT | ③ LANDSIDE | ⑤ CTA <<< |
| ② AIRFIELD | ④ FACILITIES | ⑥ AA PROJECTS |

Segments 7

- Impacting two right inner lanes and sidewalk February 24, 2025 – August 28, 2025

Segment 10 / North Pump House

- Impacting two right inner lanes and sidewalk October 5, 2024 – November 25, 2025



Segment 7 – CL 61 to 54



Segment 7 – CL 54 to 46



AGENDA

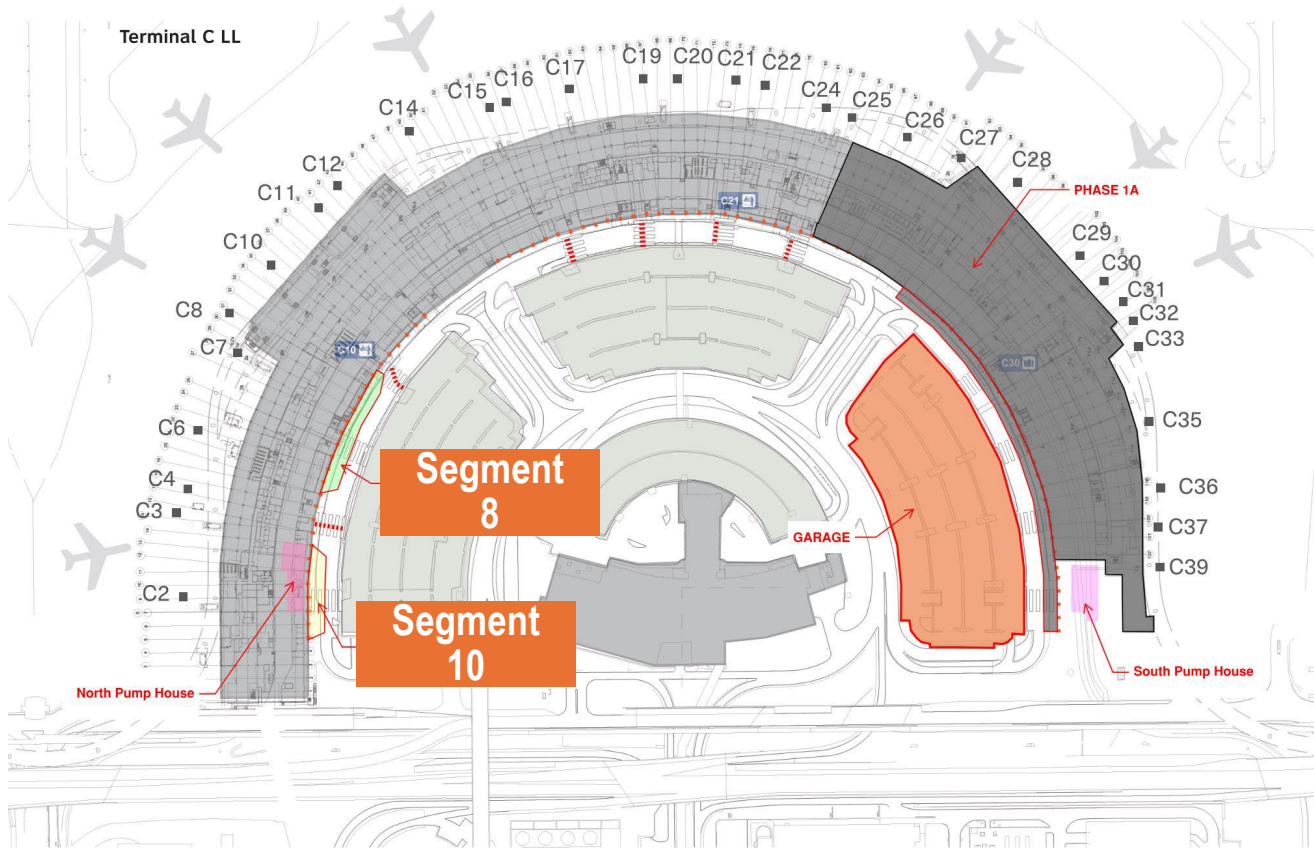
- | | | |
|--------------------------|--------------|---------------|
| ① COMMERCIAL DEVELOPMENT | ③ LANDSIDE | ⑤ CTA <<< |
| ② AIRFIELD | ④ FACILITIES | ⑥ AA PROJECTS |

Segment 8

- Impacting two right inner lanes and sidewalk August 28, 2025 – November 17, 2025

Segment 10/North Pump House

- Impacting two right inner lanes and sidewalk October 5, 2024 – November 25, 2025



NPH – CMU Wall Demolition



North Tramway – Ceiling Demolition



AGENDA

① COMMERCIAL DEVELOPMENT

③ LANDSIDE

⑤ CTA <<<

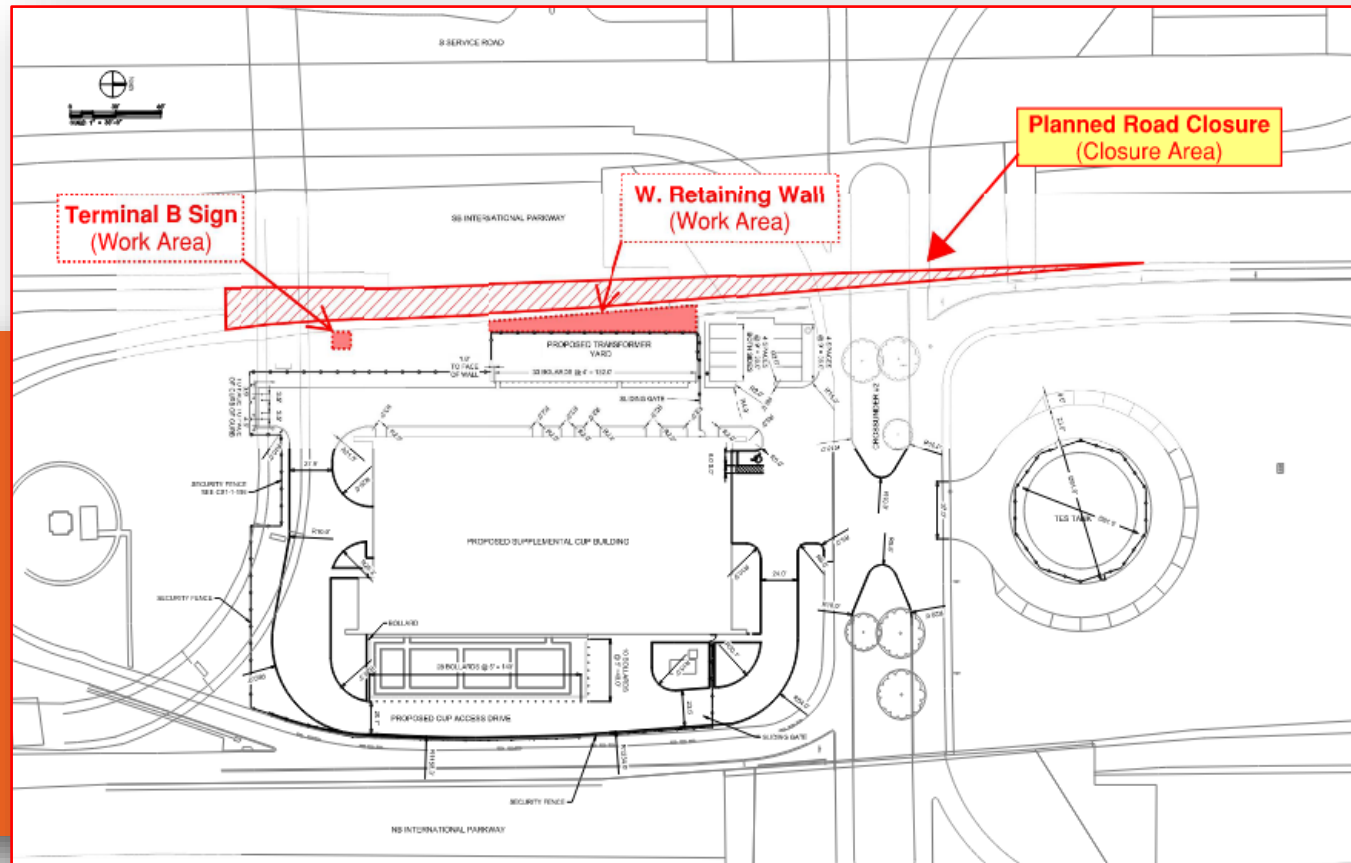
② AIRFIELD

④ FACILITIES

⑥ AA PROJECTS

Terminal B Exit Ramp Closure – Planned to Occur April 25 & April 26, 2025 – Two Nights

- West Retaining Wall to be backfilled from the exit ramp.
- Terminal B sign will be adjusted for plumbness during the same closure.





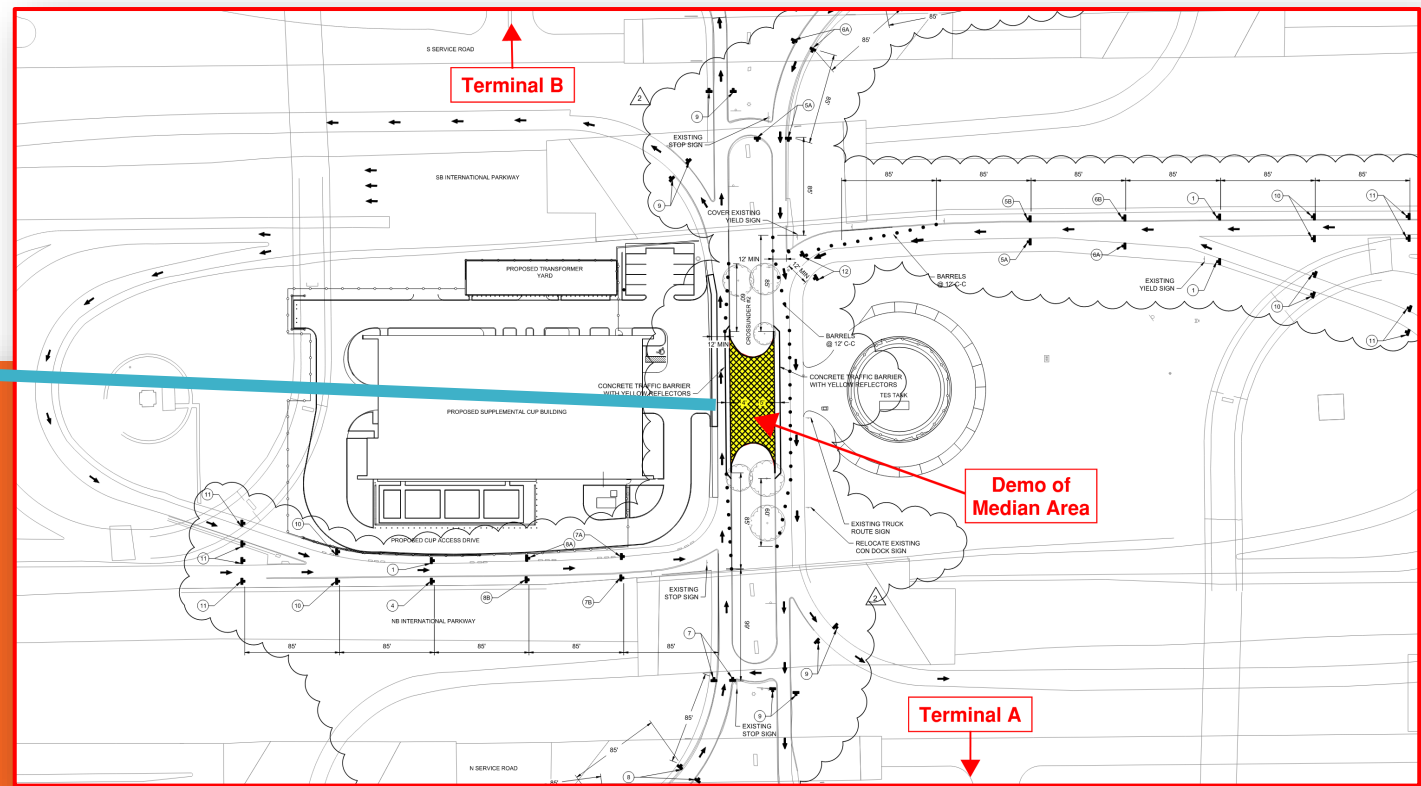
AGENDA

- ① COMMERCIAL DEVELOPMENT
- ② AIRFIELD
- ③ LANDSIDE
- ④ FACILITIES
- ⑤ CTA <<<
- ⑥ AA PROJECTS



Median Traffic Closure – Planned Start by Late May of 2025

- Demo of Median Area along IP / Cross-under #2 Roadway to construct passage between eCUP and TES Tank
(Per Phase 2 of the eCUP Approved Traffic Control Plan).
 - Barricades extended past existing roadway; traffic redirected towards shoulder areas.



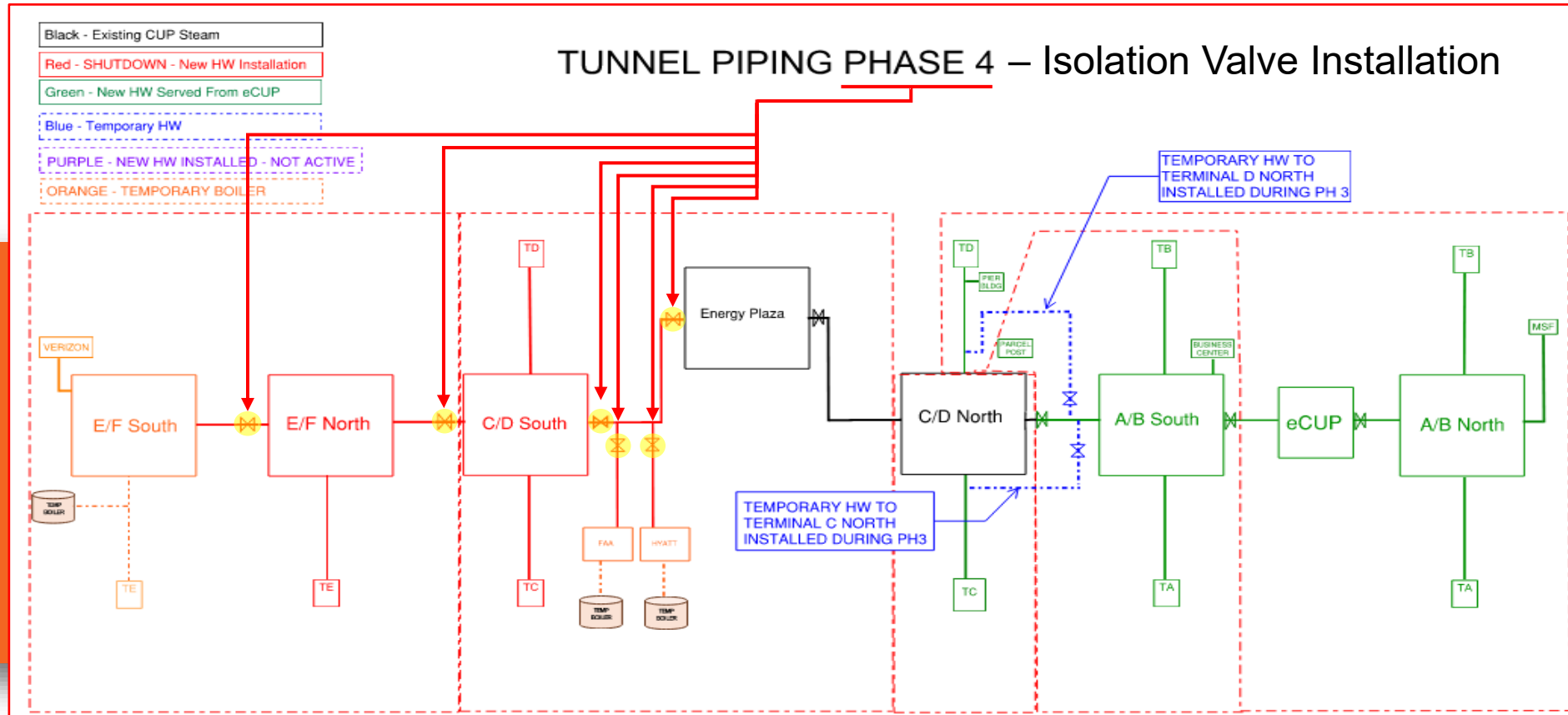


AGENDA

- ① COMMERCIAL DEVELOPMENT ③ LANDSIDE ⑤ CTA <<<
- ② AIRFIELD ④ FACILITIES ⑥ AA PROJECTS

Tunnel Phasing Plan (Phase 4: South Isolation Valve Cut-In) – (2-Week Duration) Planned Start by September of 2025

- Phase 4 of the Tunnel Phasing Plan is an enabling phase that will involve shutting down the steam system from the Energy Plaza to the E/F-South Vault. Isolation Valves will be installed in the steam piping to accommodate future phased work.
 - Before & During Phase 4, Temporary boilers will be Operational to provide an uninterrupted heating hot water service to Terminal E, FAA/Tracon, and Hyatt Regency.
 - Heating hot water will be provided by the eCUP Plant to Terminals A & B and C & D (through North Branch Tunnels).
 - Duration of steam shutdown is anticipated to last within a total period of 1-2 weeks.





AGENDA

- | | | |
|--------------------------|--------------|---------------|
| ① COMMERCIAL DEVELOPMENT | ③ LANDSIDE | ⑤ CTA <<< |
| ② AIRFIELD | ④ FACILITIES | ⑥ AA PROJECTS |



A2 Package: Gate A18, A19, A20 Enabling

- A18 Underground Storm Structures Installed, Conducting Sub-Grade Prep for Apron Pour Back

A3 Package – Gate A13 Enabling

- Interior Finish out Ongoing, PBB Installation Ongoing
- Gate Turn Over May 5, 2025

A4 Package – Pier Footprint:

- Captured Gate A16 / A17 March 12, 2025.
- Captured Initial Building Footprint Area April 7, 2025, to Continue Apron Demo
- Apron Demo Ongoing / Prep for Fuel Vault install

A6 Package: Skylink Area

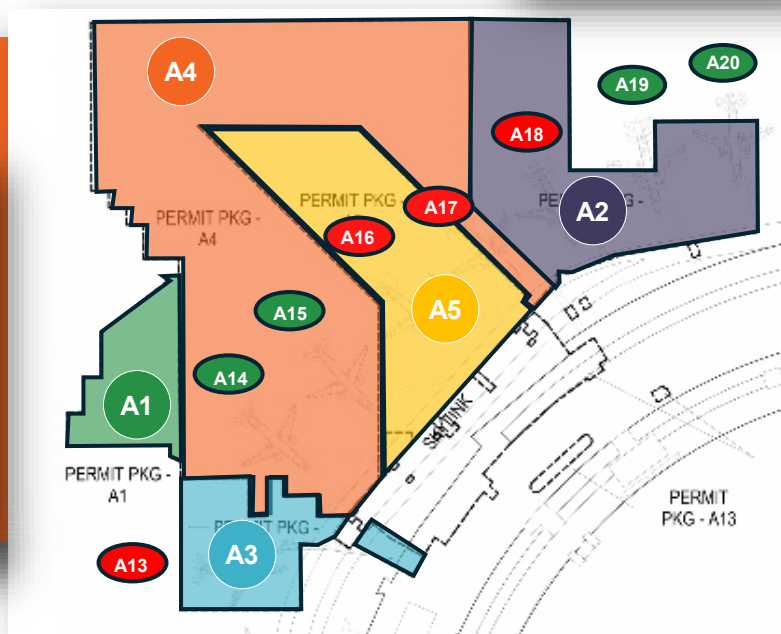
- Phase 1 Area Captured: March 25, 2025
- Conducting Tag & Trace / Make Safe



A18 Sub-Grade Prep



Pier Overall Fab Yard



Apr 8, 2025 at 11:53:29 AM
32.906607° N 97.037068° W

A13 Hold Room



AGENDA

- | | | |
|--------------------------|--------------|---------------|
| ① COMMERCIAL DEVELOPMENT | ③ LANDSIDE | ⑤ CTA <<< |
| ② AIRFIELD | ④ FACILITIES | ⑥ AA PROJECTS |



A2 Package | Gate A18, A19, A20 – Completed May 23, 2025

- Gate A18 Reopen: May 23, 2025

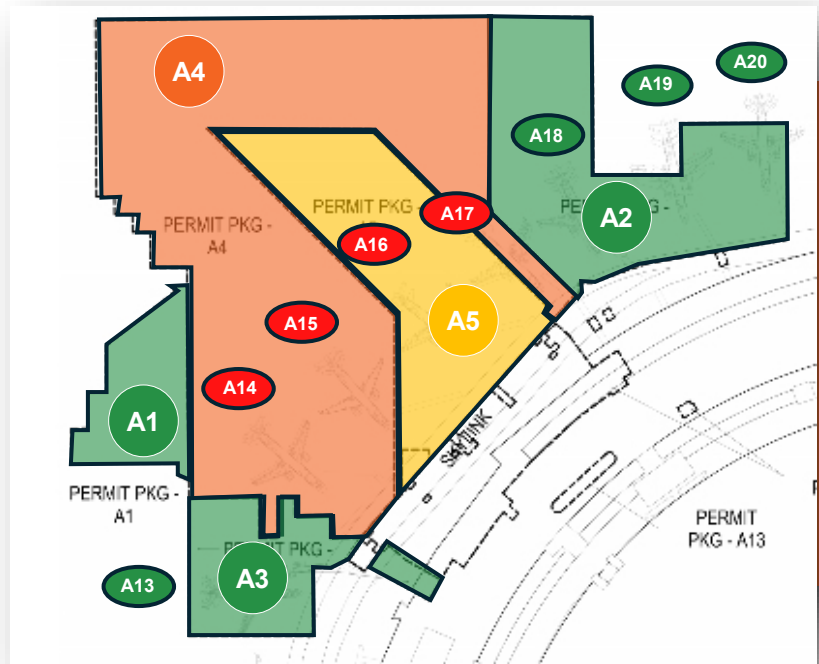
A3 Package | Gate A13 – Completed May 5, 2025

A4 Package: Pier A Apron, Underground, Structure

- Module Transport: August 2025
- Foundations and Underground utilities.

A6 Package: Skylink Area

- Phase 1 Area Capture March 25, 2025
- Ramp Level Complete December 2025
- Concourse Level Complete July 2026





AGENDA

- | | | |
|--------------------------|--------------|---------------|
| ① COMMERCIAL DEVELOPMENT | ③ LANDSIDE | ⑤ CTA <<< |
| ② AIRFIELD | ④ FACILITIES | ⑥ AA PROJECTS |

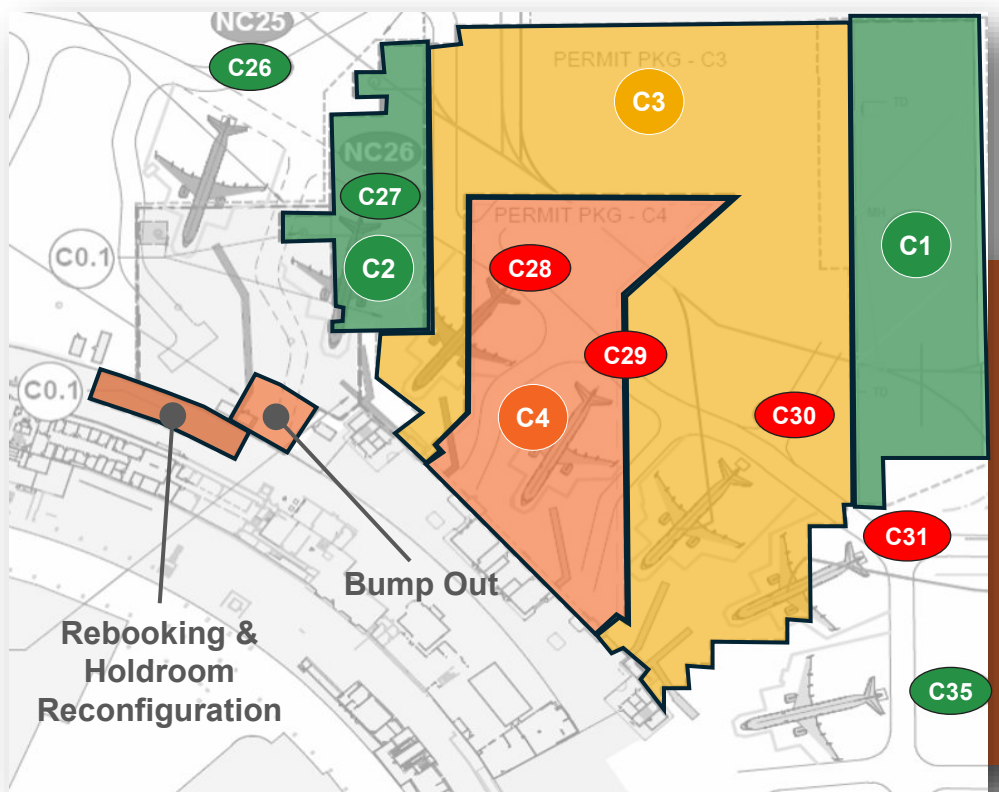


C3 Package – Pier C Apron, Below Grade Activities, Building Structure

- Foundations (piers and micropiles) are completed, Underground Utility & Jet Fuel Line and Vault activities are ongoing
- Started building pad work on March 11, 2025, to prep for the Module move. Pours 1-4 Completed SOG. Remaining slabs to be completed after module move

C4 Package – Pier C Core, Shell, Interiors

- Final MEP, IT, HVAC and Roofing activities in Fab Yard ongoing at Fab Yard C in preparation for Module move





AGENDA

① COMMERCIAL DEVELOPMENT

② AIRFIELD

③ LANDSIDE

④ FACILITIES

⑤ CTA <<<

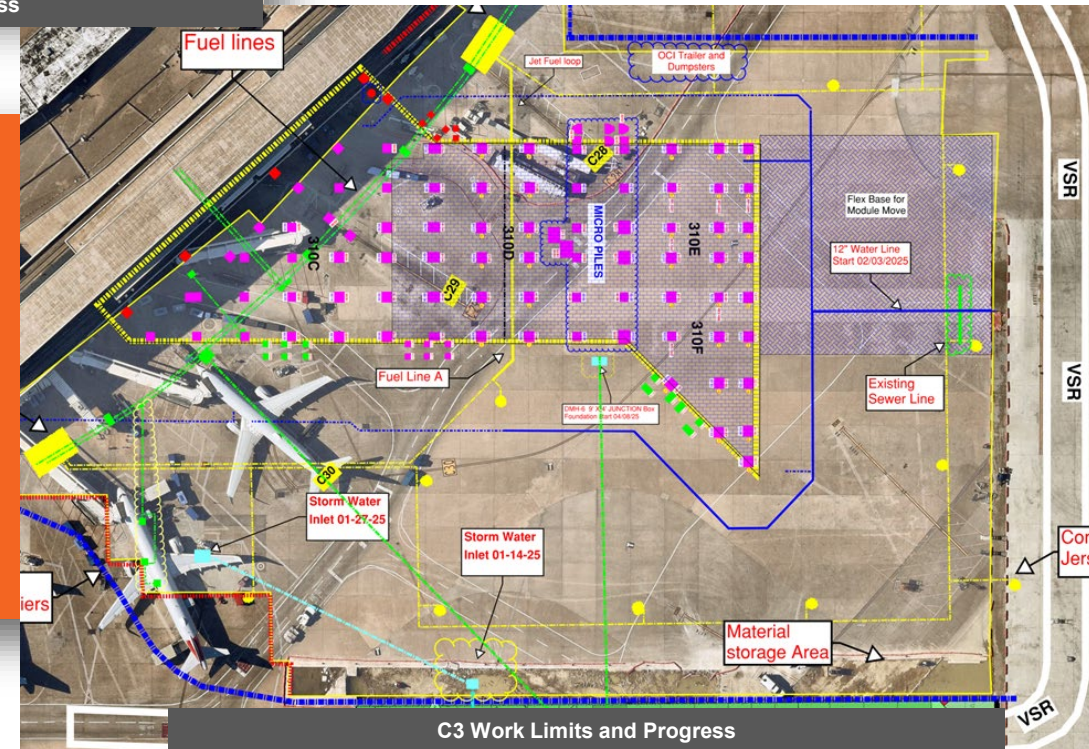
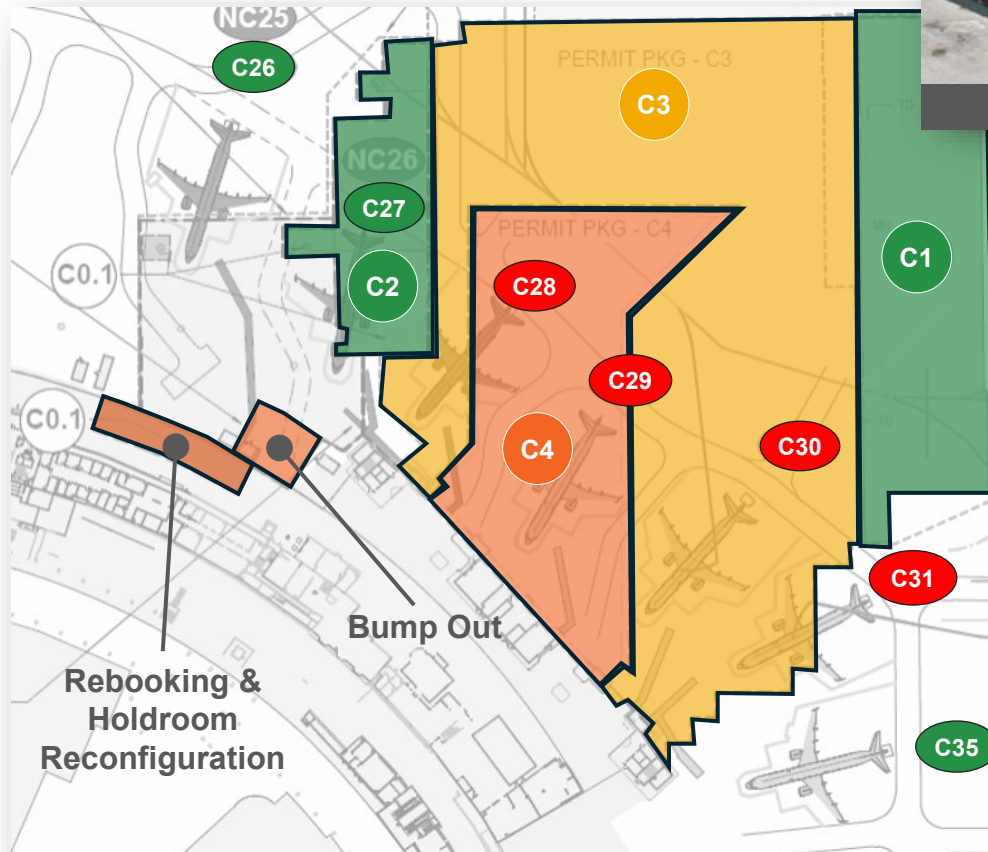
⑥ AA PROJECTS

C3-C4 Package

- Module Transportation week of Apr 14, 2025.
- Complete Module Transport: May 7, 2025
- Complete C3 Package: Sep 2025



Fab Yard C Overall Progress



C3 Work Limits and Progress



AGENDA

① COMMERCIAL DEVELOPMENT

② AIRFIELD

③ LANDSIDE

④ FACILITIES

⑤ CTA <<<

⑥ AA PROJECTS

[P2] Passenger Corridor – Substantial Completion: June 2025

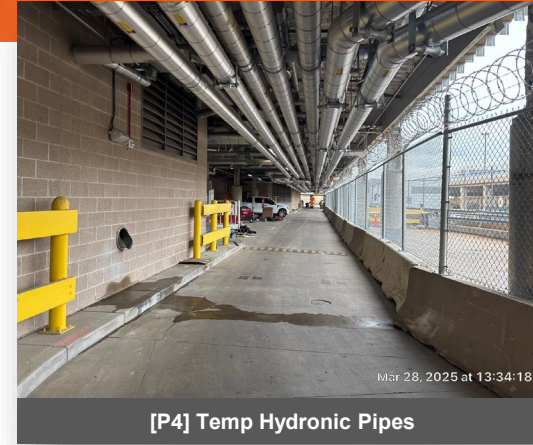
- Temp Passenger corridor Phase-1 open to public
- Bump out Column retrofit, Foundations Piers & Pile caps

[P3] Construction Access Gate – Substantial Completion: May 2025

- Widening of Construction Gate (60' access) completed, Prep subgrade for Foundation for Guard Shack

[P4] Demo & Make Safe

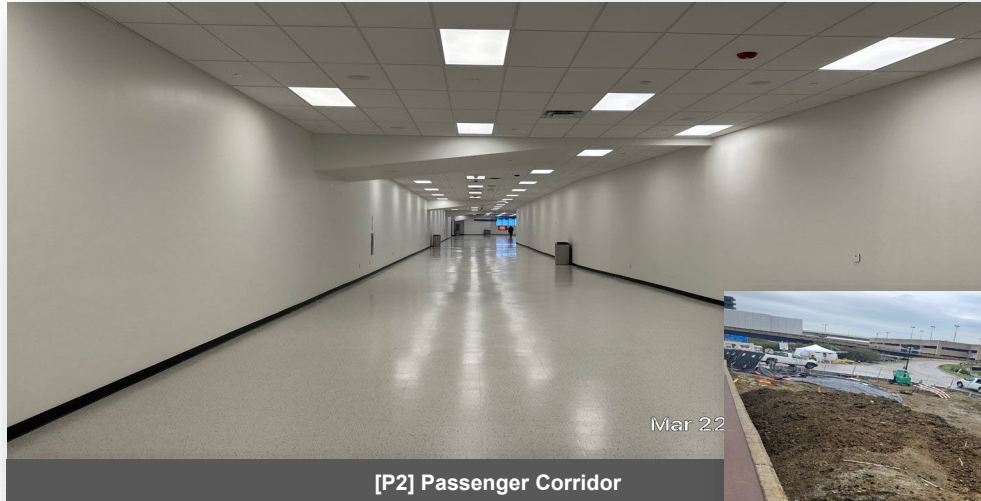
- Upper Roadway & Lower Roadway Right lane closure
- New Foundation South Infill area, Install SIDA fence at Ramp, concourse & roof level ongoing.
- Ongoing - Demo and make safe activities (Demo Passenger egress bridge, abatement etc.)
- Building demolition at A-B line starting this week



[P4] Temp Hydronic Pipes



[P4] Upper-Level Roadway



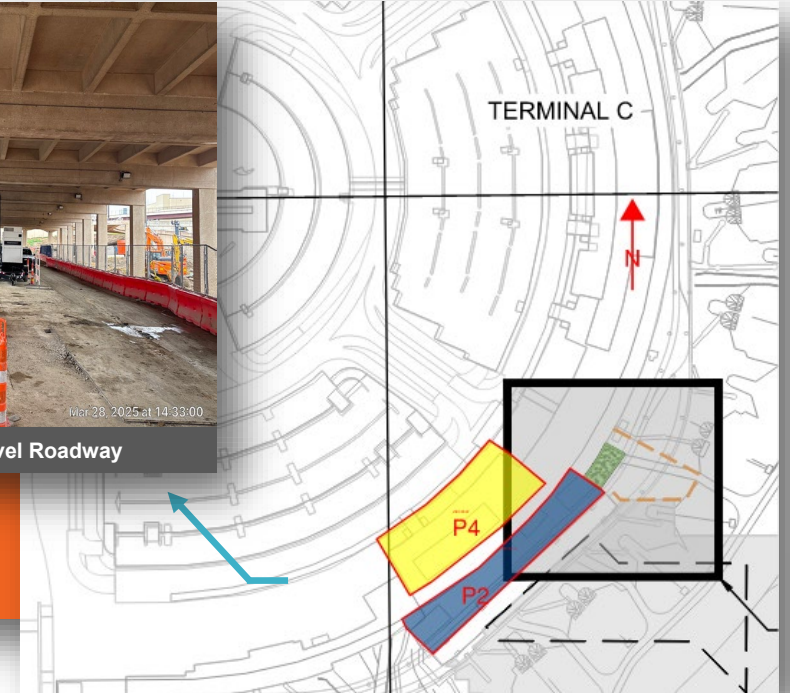
[P2] Passenger Corridor



[P3] Construction Entrance Gate



[P4] Lower-Level Roadway





AGENDA

① COMMERCIAL DEVELOPMENT

③ LANDSIDE

⑤ CTA <<<

② AIRFIELD

④ FACILITIES

⑥ AA PROJECTS

[P2] Passenger Corridor – Full Substantial Completion: June 2025

- Passenger Corridor open for circulation without bump out
- Bump-Out Work Ongoing - Curtain wall installation, Micro piles and pile caps

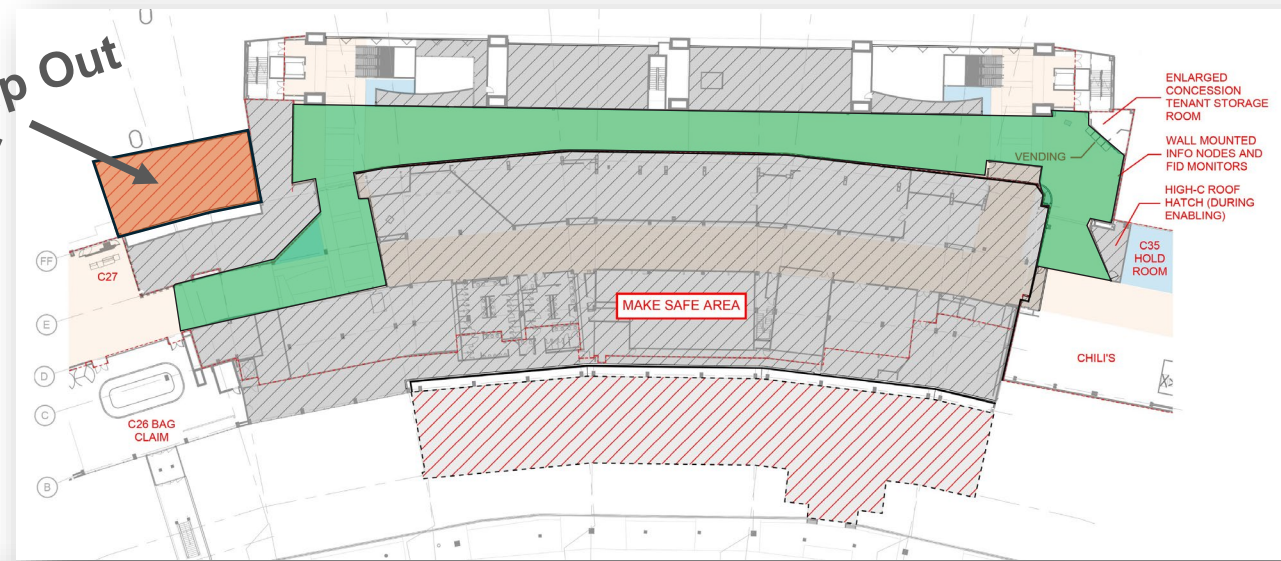
[P3] Construction Access Gate - Substantial Completion: May 2025

- FRP permanent guard booth foundation and power

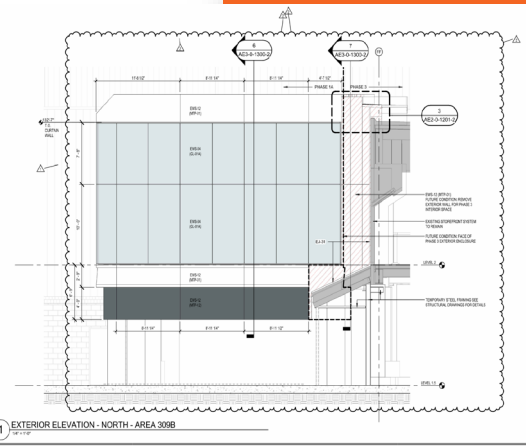
[P4] Demo & Make Safe: Demo Starting April 2025

- Selective & Structural Demolition of existing Concourse and ramp areas
- Waterproofing of concourse floor
- New Foundation and Reinforcement on ramp level
- South Infill foundations and steel erection work
- Infill steel in existing building
- South Infill underground utilities

Bump Out



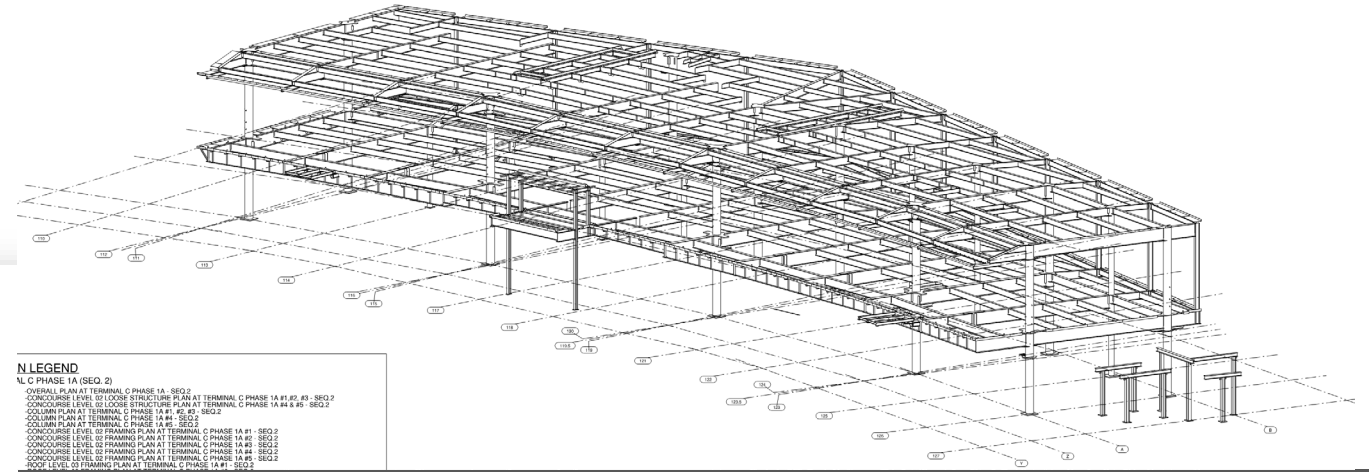
[P2] Bump out



[P2] Passenger Corridor-Bump Out



- Structural Demo and demolition of existing utilities
- Underground utility installations
- Foundations in GL-AB footprint
- Structural steel, roofing, Curtainwall in south infill area



[P4] Steel Erection-South Infill



[P4] New Foundations



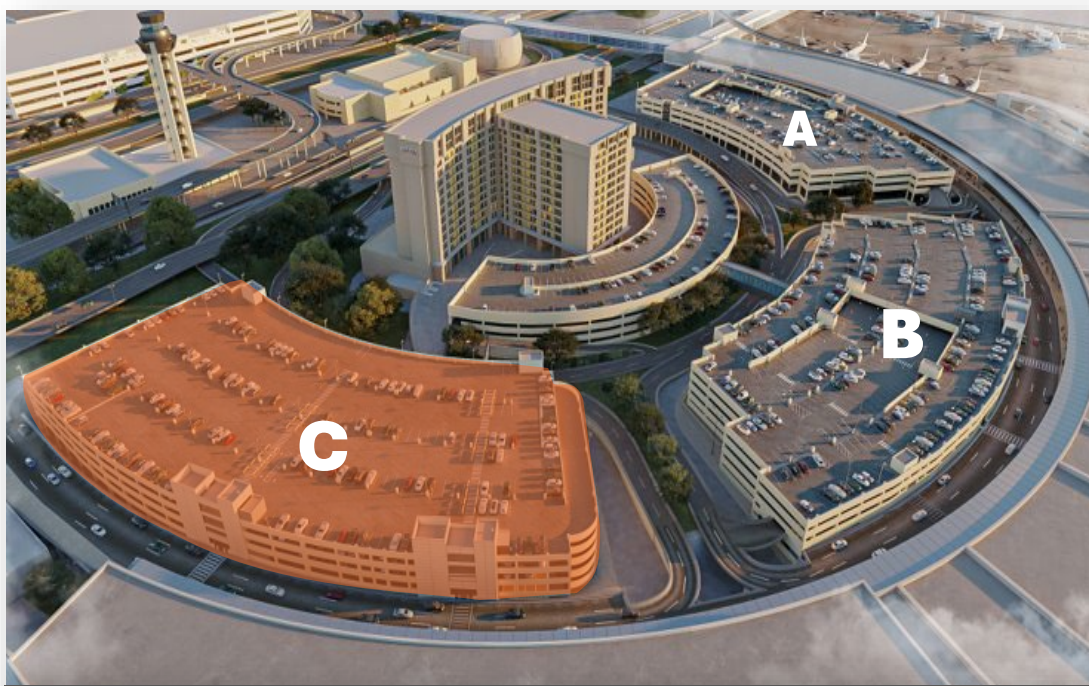


AGENDA

- ① COMMERCIAL DEVELOPMENT
- ② AIRFIELD
- ③ LANDSIDE
- ④ FACILITIES
- ⑤ CTA <<<
- ⑥ AA PROJECTS

Construction Update

- Retention System Installation
- Partial Road Demo - Install Underground Water Line ongoing
- Pipe Bursting
- Tower Crane Foundation
- Lower roadway sections of Terminal C Garage C is closed to public
- One lane access will always be available for Emergency Vehicles on both Upper and Lower levels
- Foundation Zone 1 Piers



Terminal C Garage South (C)



3.26.25

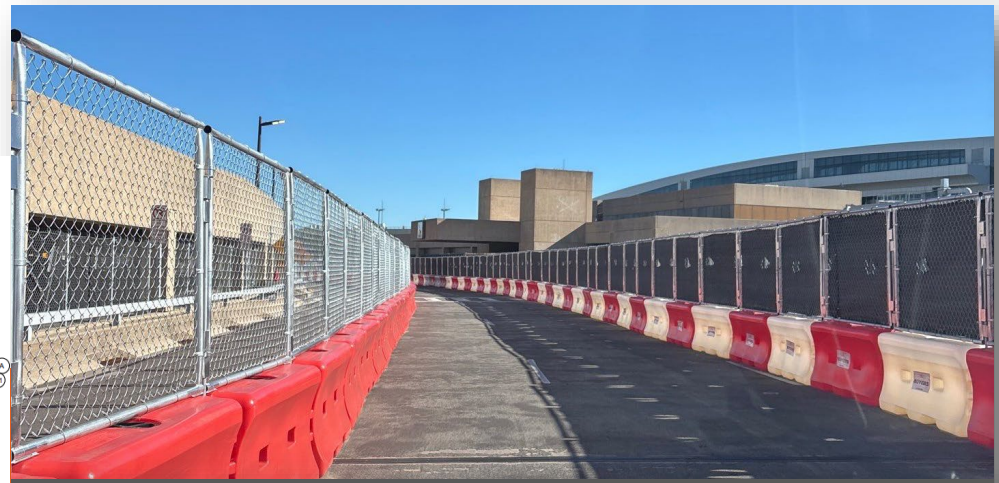
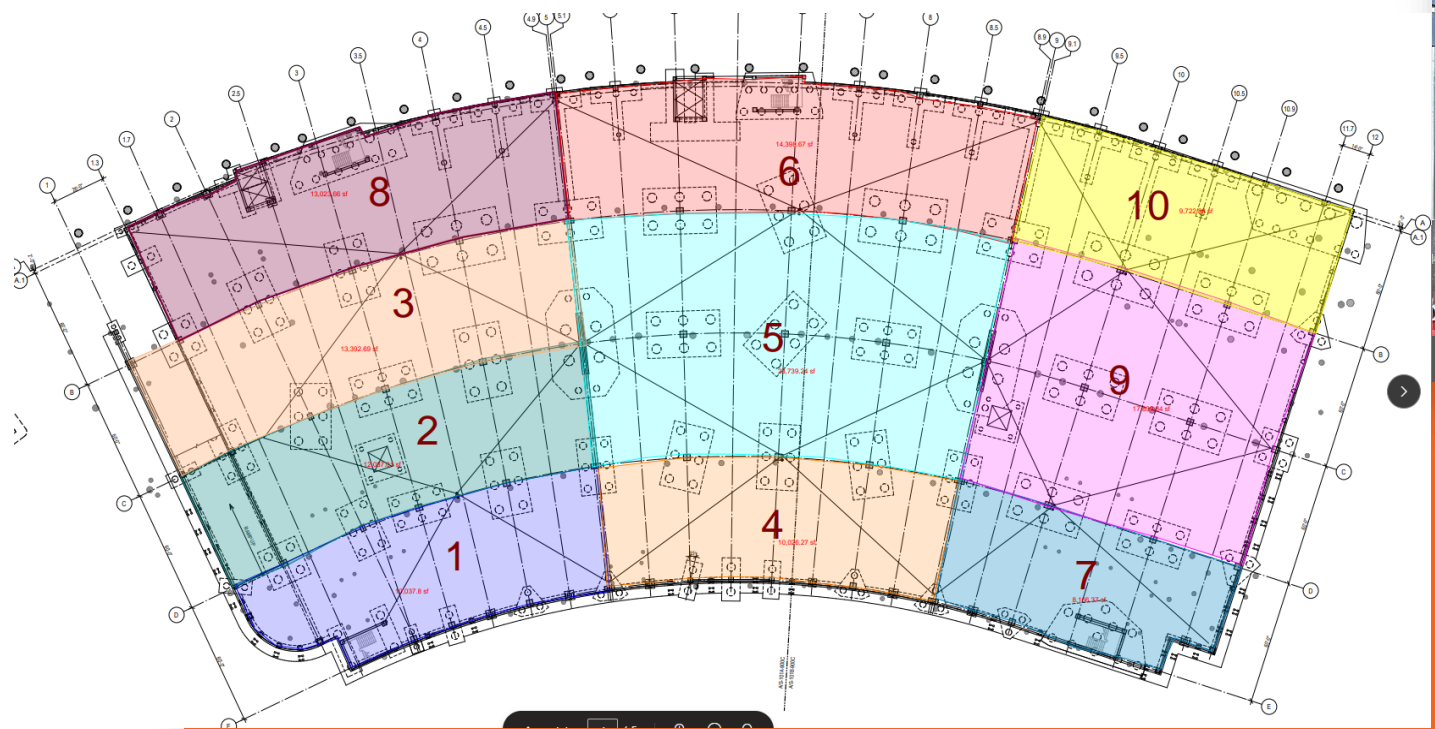


AGENDA

- | | | |
|--------------------------|--------------|---------------|
| ① COMMERCIAL DEVELOPMENT | ③ LANDSIDE | ⑤ CTA <<< |
| ② AIRFIELD | ④ FACILITIES | ⑥ AA PROJECTS |

Construction Update through October 2025

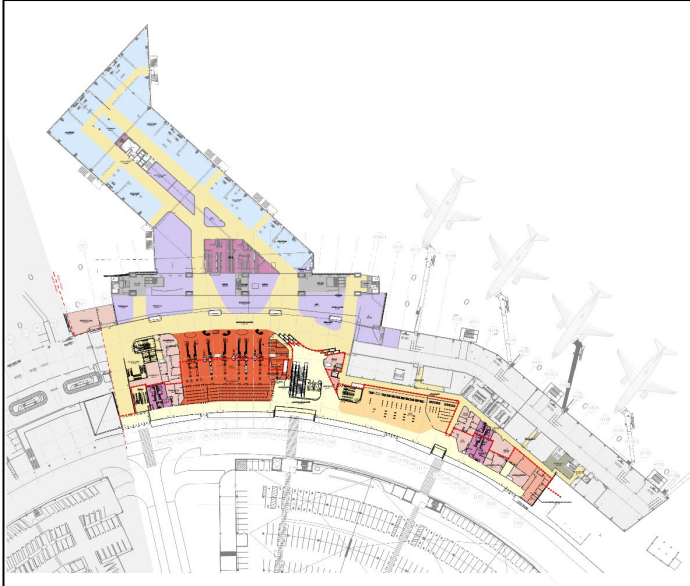
- Roadway closure continues - One lane access available for Emergency Vehicles
- Retention System Installation - Ongoing
- Foundation work - Ongoing
- Underground Utility work along roadway
- Tower Crane Installations – Ongoing
- Elevator Pit Installation
- UG Utilities



Emergency Lane – Upper Level

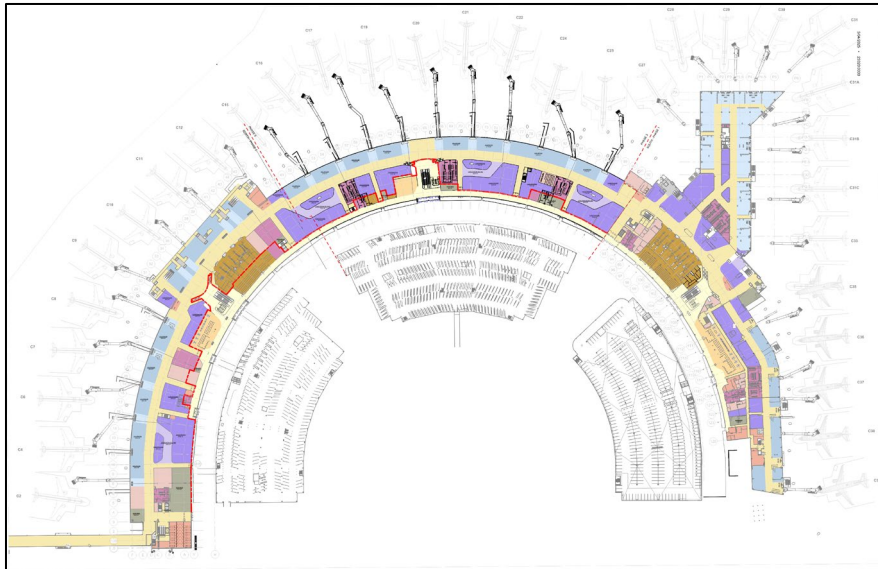
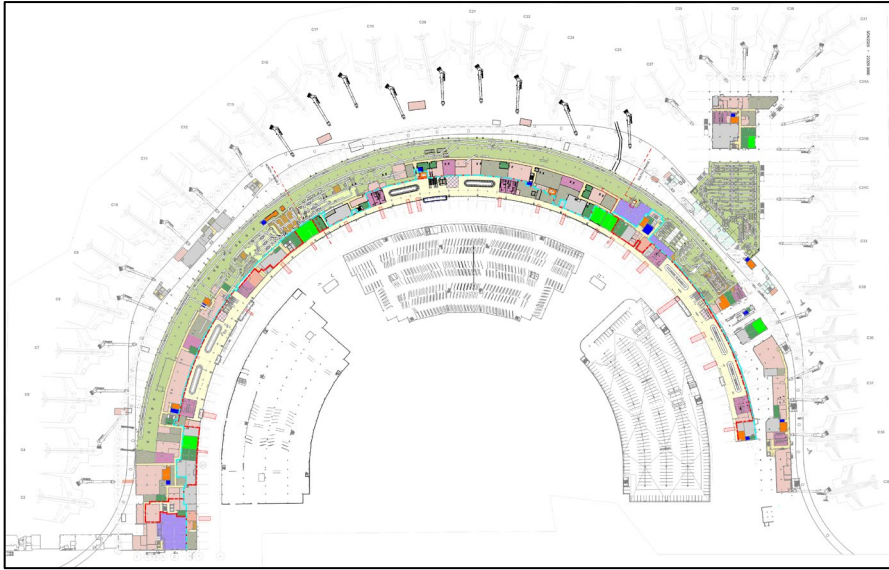
AA PROJECTS UPDATE





Reimbursement Agreement with American Airlines, Inc. for Terminal C Phase 1 and A&C Pier Ramp Level Fit Out Design Services

- Description
 - AA will manage the design, construction, and build-out of Phase I of Terminal C and the ramp-level offices on the A & C Piers that support the AA Operation.
 - DFW and AA are working in close collaboration to manage the project. This joint effort is aimed at ensuring the fastest delivery of the new gates, which are of utmost importance to AA's operations.
- Terminal C Phase I and A & C Pier Ramp Level Fit Out Design Services 26908-92
 - Completion Date: 4Q 2026
 - OBA Approved Amount: \$12.7M
 - Remaining Budget: \$7.7M
 - Schedule: 100% CDs – May 2025
 - Closing Spaces: TSA SSCP, Lobby, AA/DFW BOH Support Spaces, TSA CBIS/CBRA
 - Opening Spaces: N/A
 - Fit Out design ongoing



Reimbursement Agreement with American Airlines, Inc. for Terminal C Redevelopment Phase 2 and 3 Design Services

- Description
 - AA will manage the design, construction, and build-out of Phase II and III of Terminal C.
 - DFW and AA are working in close collaboration to manage the project. This joint effort is aimed at ensuring the fastest delivery of the renovated gates.
- Terminal C Redevelopment Phase II and III Design Services 26908-92
 - Completion Date: 4Q 2029
 - OBA Approved Amount: \$22.2M
 - Remaining Budget: \$22.2M
 - Schedule: 100% Design – September 2025
 - Closing Spaces: N/A
 - Opening Spaces: N/A
 - Fit Out design ongoing



Reimbursement Agreement with American Airlines, Inc. for Terminal C Renovations AA Support Space Relocations – Construction Phase

- Description
 - AA will manage the design and construction for the relocation of AA support spaces in Terminal C.
 - Relocation of operational support spaces from Terminal C to Terminal A, including Station Management, Customer Operations, Customer Care, Flight Administration & Operation, and front/back-of-house support spaces
- Terminal C AA Support Space Relocation Project 26908-91
 - Completion Date: 2Q 2025
 - OBA Approved Amount: \$10.8M
 - Remaining Budget: \$2.2M
 - Schedule: Station Management, Crew Chief Offices, AAIT Office, Storage, AAFM Workshop, AAFM Training, Team Member Support Center, Flight Operations. Customer Operations, Allied Breakroom, Tech Ops, and Terminal Business Unit are all Occupied, TCO'd and scheduled to be closed out in Q2.
 - Status: Commissioning and Closeout ongoing.



Midfield Security Checkpoint

Reimbursement Agreement with American Airlines, Inc. for Reconstruction of 1E Cargo Road and Construction of a Midfield Security Checkpoint

- Description
 - Reimbursement Agreement with AA for the design and construction of the 1E Cargo Road and Construction of a Midfield Security Checkpoint.
 - The 1E Cargo Road was constructed as a concrete road in 1995 and was not designed to accommodate the current heavier traffic. The road also has four high-mast poles in the center, which hinders movement. Due to increased traffic and road deterioration, reconstruction of the road is needed for safety and continued support of the increased traffic.
 - Technology enhancement implementation of the Midfield Security Checkpoint, from 1E cargo facilities to the secure area via the cargo road, will heighten security measures.
- 1E Cargo Road – Project 26935-01
 - Completion Date: 3Q 2025
 - OBA Approved Amount: \$8.9M
 - Remaining budget: \$2.9M
 - Schedule: On schedule
 - Status: Construction ongoing
- Midfield Security Checkpoint – Project 26829-04
 - Completion Date: 1Q 2025
 - Schedule: On schedule
 - Status: Construction ongoing



1E Cargo Road Reconstruction



Reimbursement Agreement with American Airlines, Inc. for Terminal B Mainline Up-gauge Package 1 & 2

Description

- Reimbursement Agreement with AA for the design and construction of five (5) regional jet gates to mainline gates in Terminal B and five gates in Terminal E Satellite to CR7 gates. The scope of work includes the associated interior build-out, ramp modifications, and Baggage Handling System expansion work.

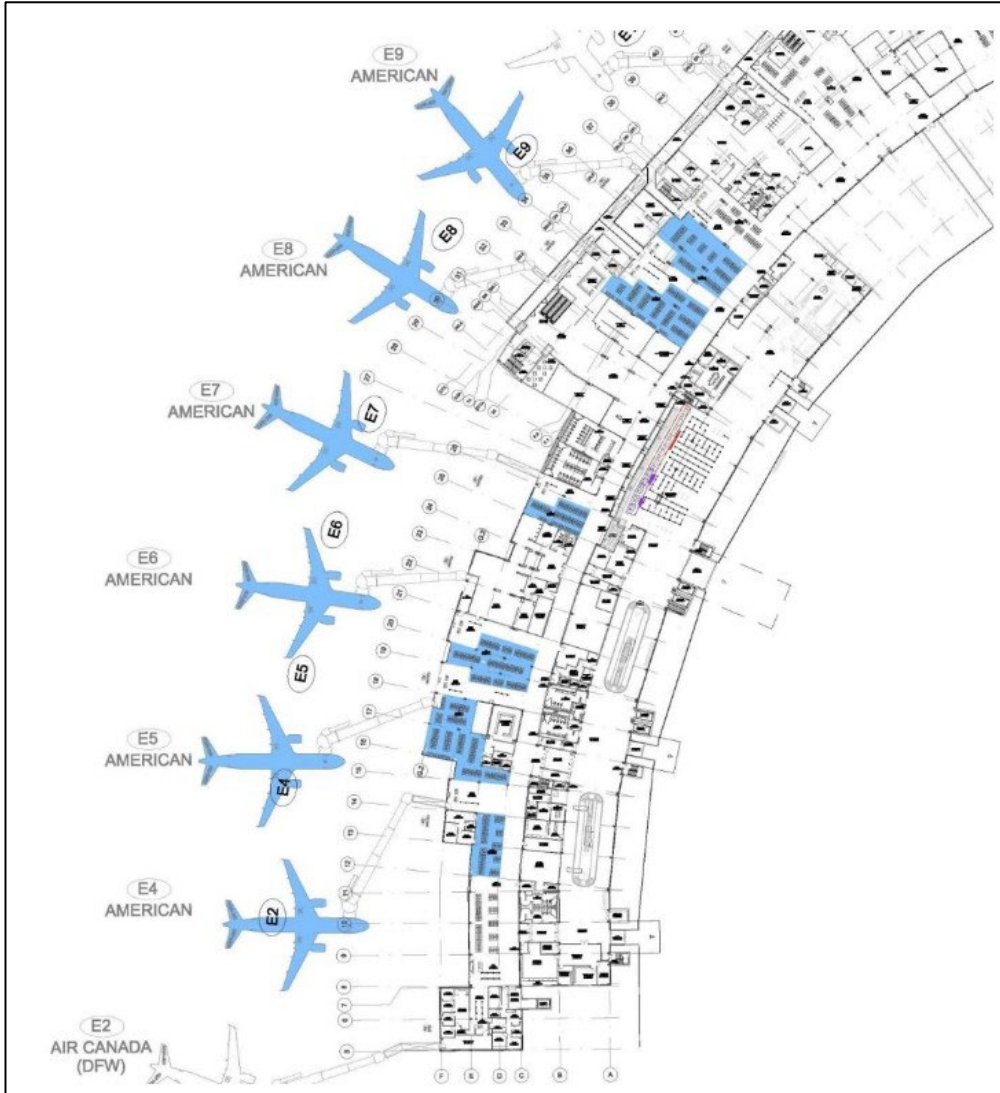
Terminal B Mainline Package 1 & 2 Project 27098-01

- Completion Date: 4Q 2025
- OBA Approved Amount: \$45.2M
- Remaining budget: \$11.1M
- Schedule:
 - Small Concessions TCO scheduled for April 11, 2025.
 - 30% SD Drawings for B9-B12 Holdrooms Reconfiguration, Appro, Driver Simulator & Access Control Office have been sent to Stakeholders for comments.
- Status: Design & Construction ongoing



Reimbursement Agreement with American Airlines Inc. for Terminal A Pappadeaux's Escalators

- Description
 - Replacement of existing Pappadeaux's escalators. The escalators are original to the construction of the old tram people mover. They are well beyond their useful life, require substantial maintenance and repair, and suffer significant outages, driving customer inconvenience.
 - AA has maintenance responsibilities for Terminals A and C; this escalator is covered under that agreement.
- Replacement Pappadeaux Escalator Project 27090-01
 - Completion Date: 4Q 2024
 - OBA Approved Amount: \$1.8M
 - Remaining budget: \$186K
 - Schedule: Construction Complete
 - Status: In Close-Out



Reimbursement Agreement with American Airlines, Inc. for the Design of Terminal E Reconfiguration

- Description
 - AA is relocating its operations at Terminal E from the South end to the North end. This will require the reconfiguration of lobby and gate counters, support areas on the concourse and ramp levels, and branding of hold rooms. The BHS will also be modified airside, and ADVGS will be restriped and re-aligned.
- Terminal E Reconfiguration Project 27155-01
 - Design Complete: 3Q 2024
 - OBA Approved Amount: \$3.4M
 - Remaining budget: \$2.9M
 - Status: On Hold
 - Anticipated Construction Start Date – TBD



Reimbursement Agreement with American Airlines, Inc. for the Nova Baggage Lift Installation

Description

- AA is installing Nova Baggage Lifts and slides at 150 gates. Per DFW instructions, the existing slide will be removed and disposed of.
- AA-maintained gates will be installed first, followed by DFW-maintained gates, which will be commissioned by DFW's consultant.

Nova Lift Schedule

- Installation Complete: 3Q 2024
- OBA Approved Amount: \$5.8M
- Remaining budget: \$347K
- 140 units have been installed. Nine units are in storage for the piers.
- Construction Start Date – May 5, 2024
- Construction end date – December 19, 2024
- Warranty Start/End Dates – February 21, 2025 – February 21, 2026
- Status: In Closeout

THANK YOU

