



# C3

CONSTRUCTION COMMUNICATION COUNCIL

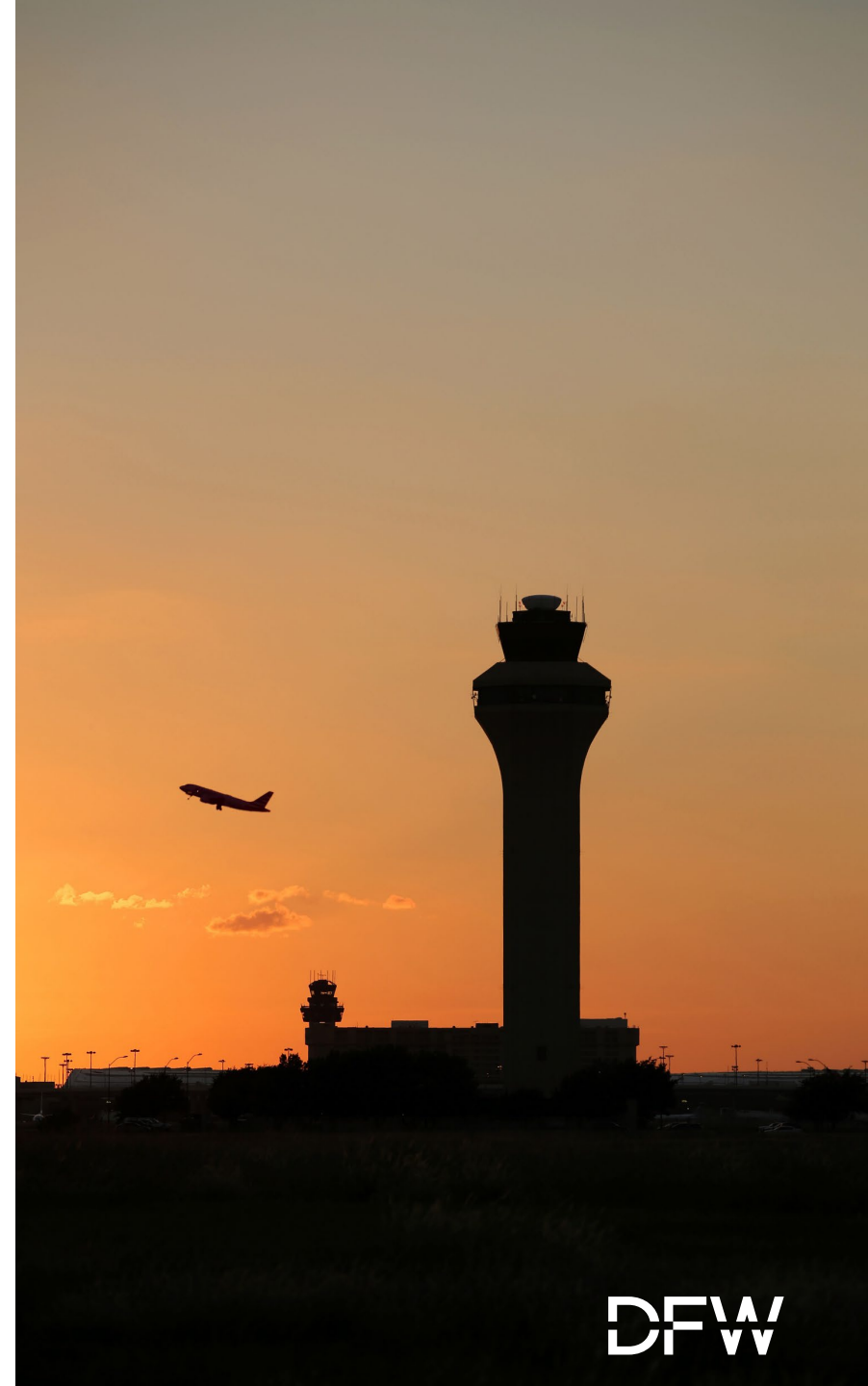
MARCH 11, 2025

DFW

# C3

**MARCH 11, 2025**

- ① Controls & Analytics
- ② Commercial Development
- ③ Airfield
- ④ Landside
- ⑤ Facilities
- ⑥ CTA

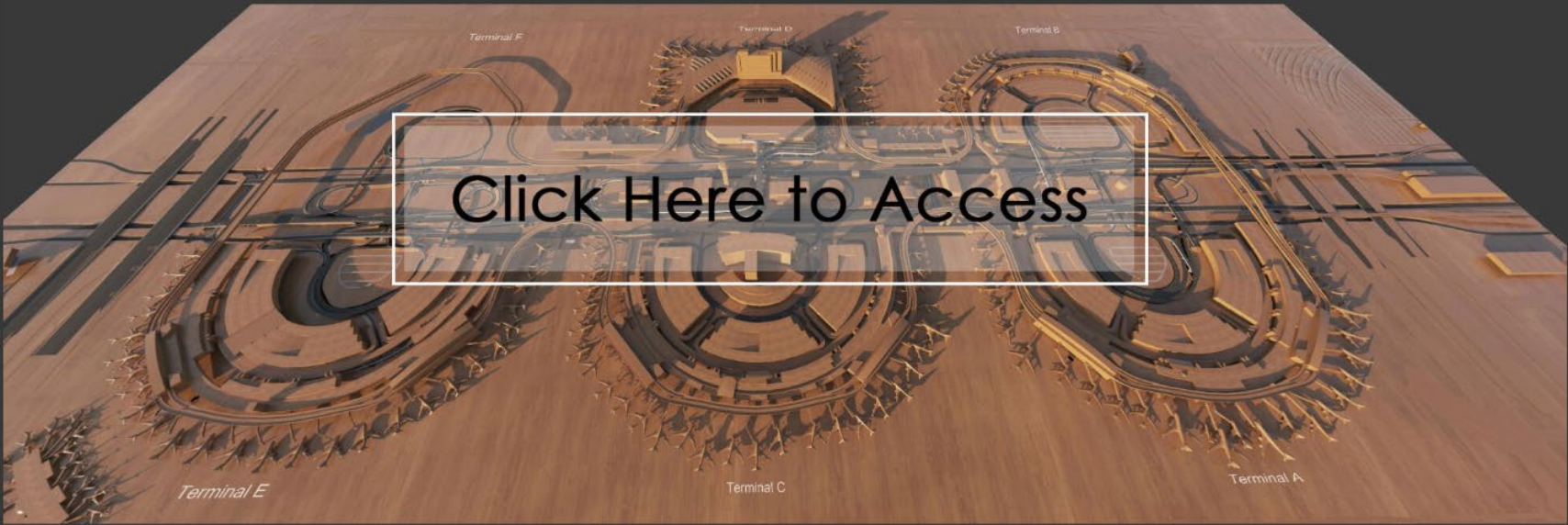




# CONTROLS & ANALYTICS



# DYNAMIC MODEL





# COMMERCIAL DEVELOPMENT







## AGENDA

① CONTROLS &amp; ANALYTICS

③ AIRFIELD

⑤ FACILITIES

② COMMERCIAL DEVELOPMENT &lt;&lt;&lt;

④ LANDSIDE

⑥ CTA

**Schedule and Scope:**

- Scheduled Work: Mass grading for Pad 5 and 6, by-pass connection for sanitary sewer connection
- Board Infrastructure Work: Mass grading; sanitary sewer installation; trenching/excavation for storm line and water line installation; retaining wall construction; electrical duct bank work

**Potential Impacts:**

- Passport Ave
  - Increased heavy equipment traffic Mon – Fri (7:00 am to 7:00 pm)
- Rental Car Drive
  - Minimal heavy equipment traffic Mon – Fri (7:00 am to 7:00 pm) (Sweeper on site)





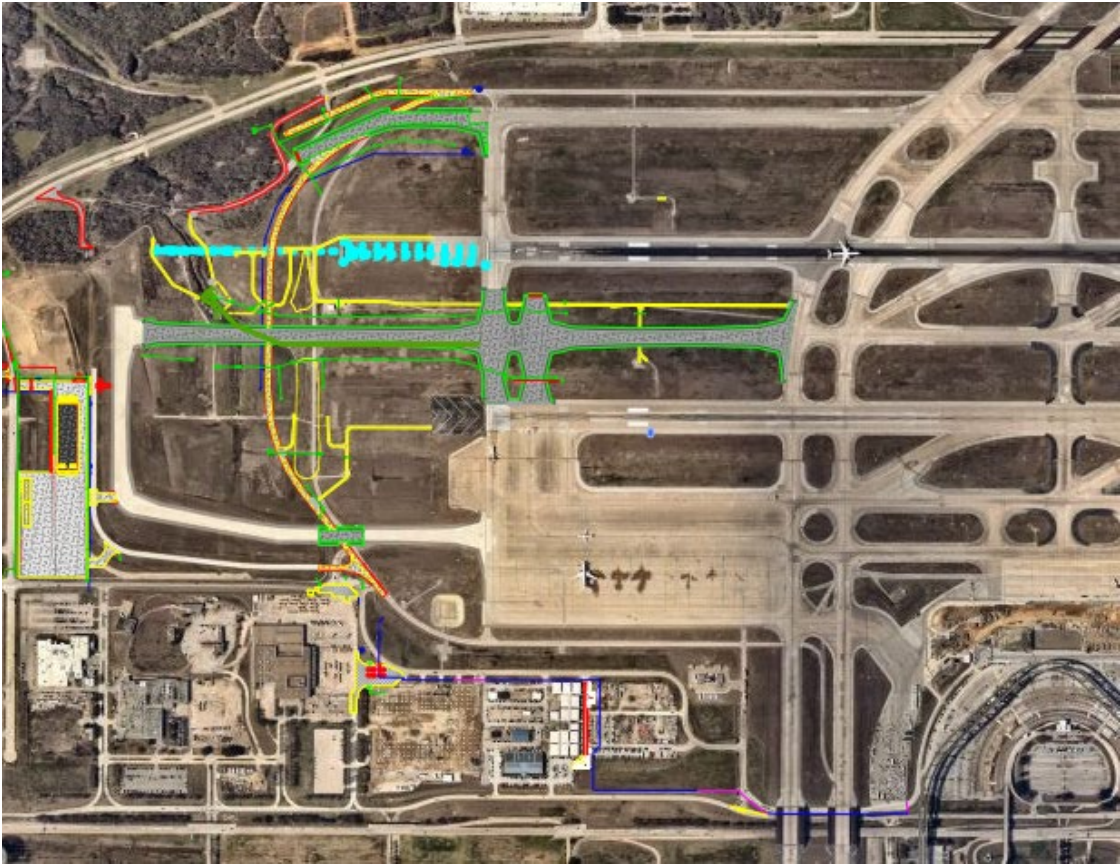
# AIRFIELD PROGRAM



DFW

Schedule and Scope:

- Completion of the Southwest End Around Taxiway Package 1B (Oct 2026)
- Construction of Airfield Support Facilities Building (Aug 2026)
- Relocation of gate 314 (May 2025)









DCC North parking lot connection construction





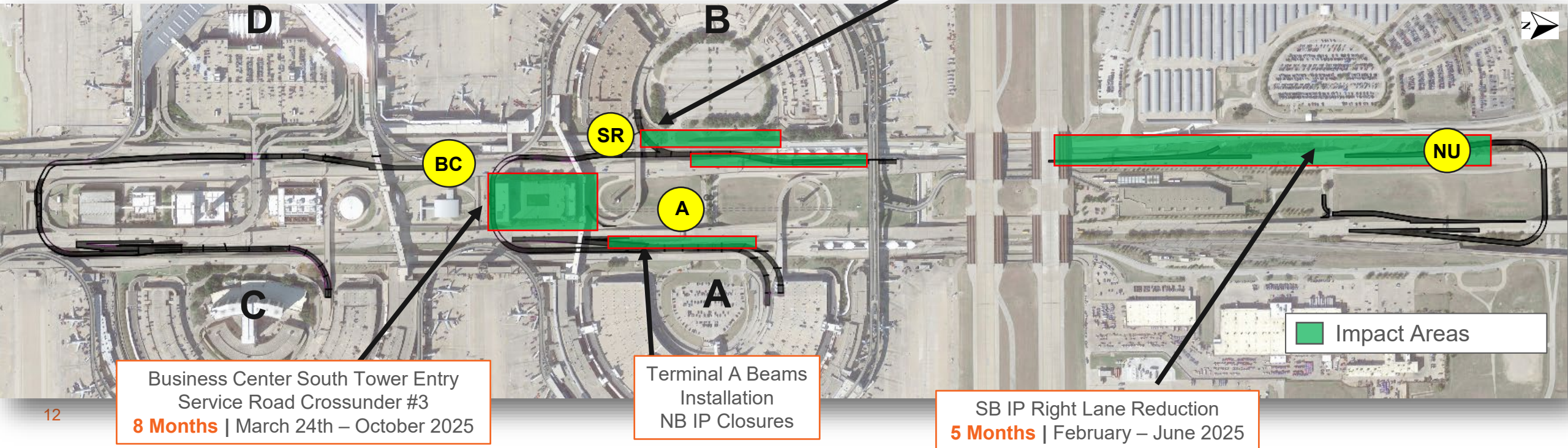
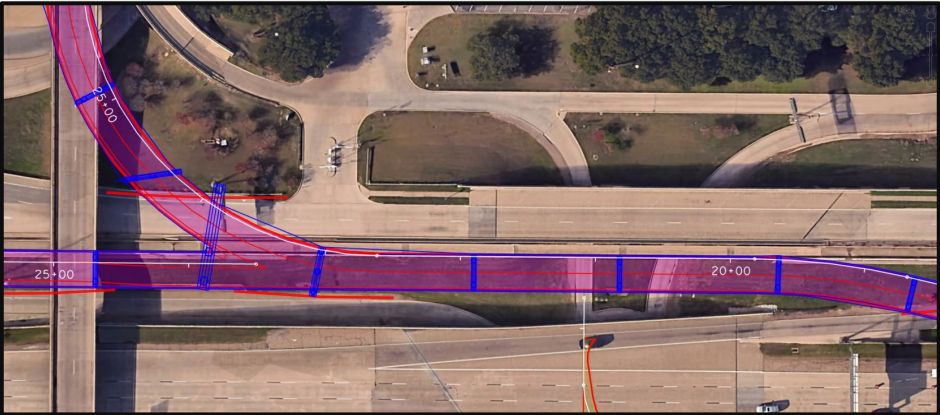
# LANDSIDE PROGRAM





Impacts to Traffic and Operations

- SR** Service Road SB Full Closure | 12 - 18 Hours | Dates / Times Shown Next Slides
- A** North Bound IP Double RT Lane Closure | 9 Hours | Dates / Times are continuously being coordinated with stakeholders (Early April)
- BC** Business Center – Impacts Coordinated with Commercial Development
  - South Tower Access Closure | 8 Month Closure | March 24, 2025 – October 2025
- NU** South Bound IP – Extended Single RT Lane Reduction | 5 Months | February 5, 2025 – June 2025





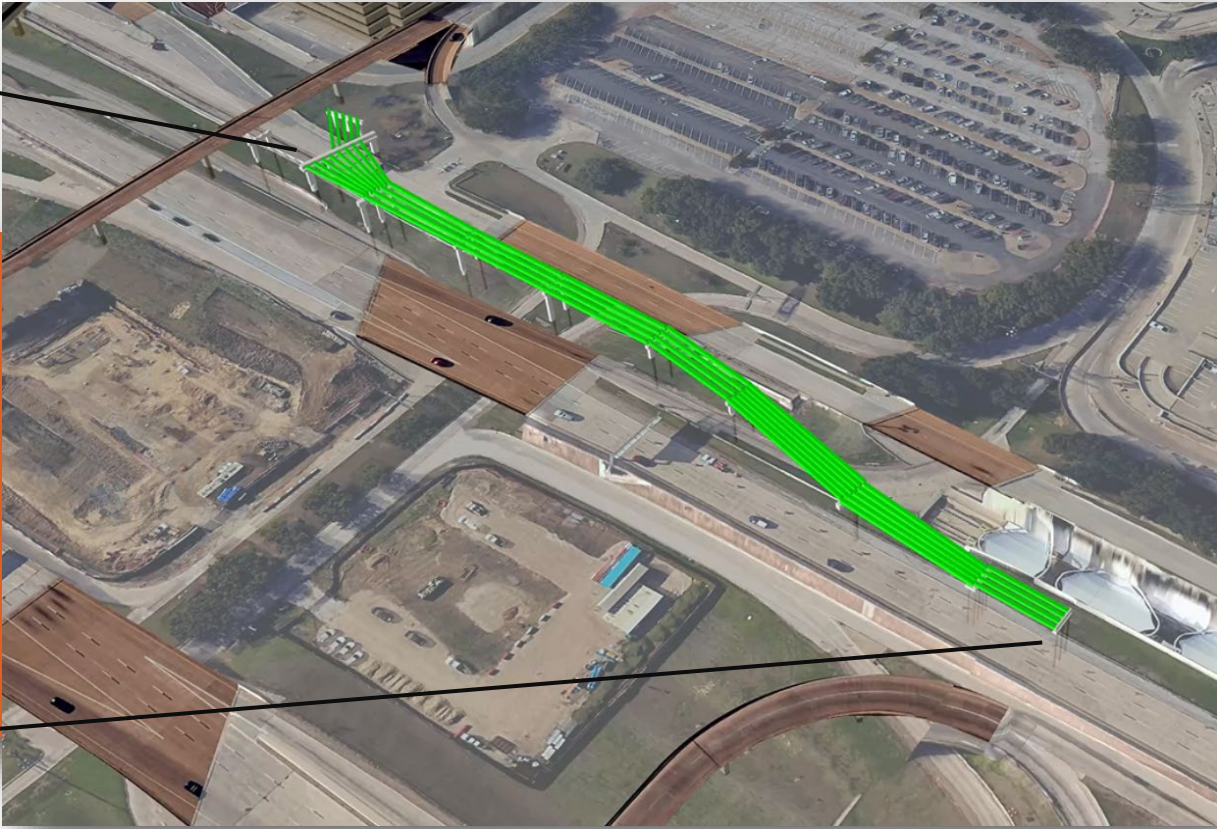
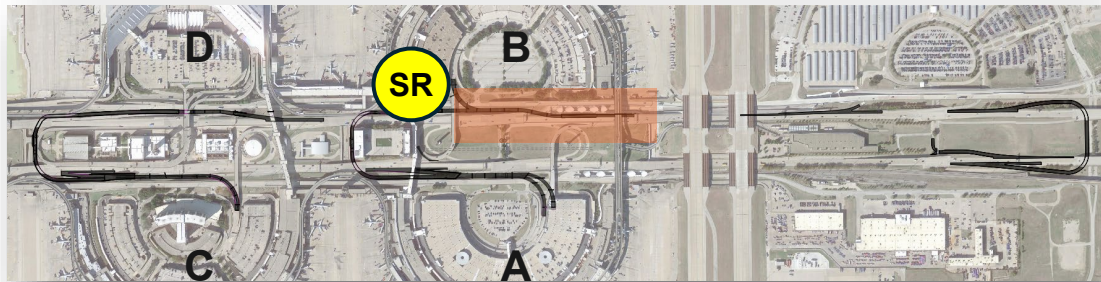
Impacts to Traffic and Operations

- SB Service Road Full Closures
- Crossover Gate from Service Road to Terminal B closure impacts

Projected Closure Dates | Reoccurring 12-18 Hour Closures

- Target Dates | Bridge Deck Pours
  - 5th Closure - Pour Bridge Deck Planned for March 22, 2025
  - 6th Closure - Pour Bridge Deck Early April

\*Service Road detour route show on next slide



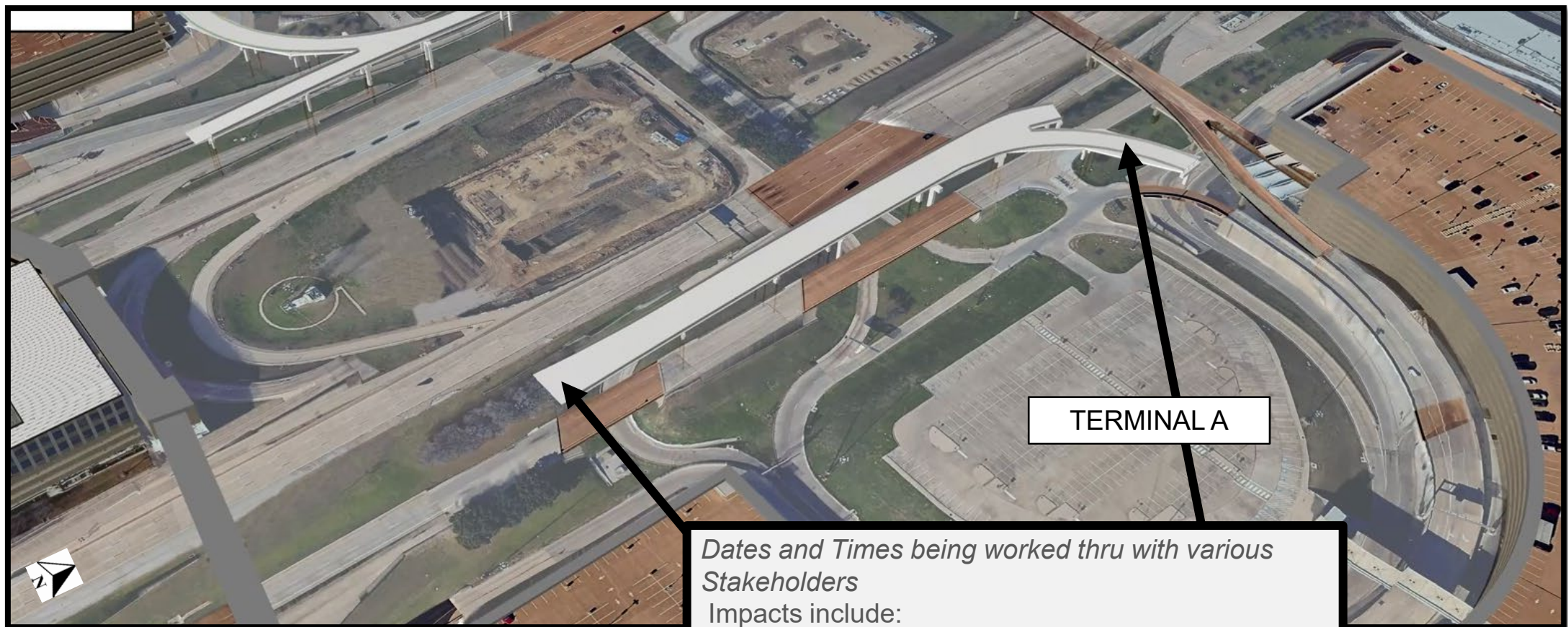






A

NB Exit to Terminal A Upcoming Impacts – Bridge Beams – April 7 – April 14



TERMINAL A

Dates and Times being worked thru with various Stakeholders

Impacts include:

- NB IP (2) Right Lane Closure (9PM – 6AM) 9Hrs.
- Term A to NB IP Ramp Impacts
- Term B to NB Ramp Impacts
- B-A Crossunder Impacts
- Northbound Service Road Impacts



BC

Service Road Crossunder #3 Full / Access to Business Center South Tower Full Closure



Service Road Crossunder #3  
Business Center South Tower –  
**8 Month Closure**

**Begin March 24, 2025 – November 2025**

Reconstruct Connecting Bridge and  
Supporting Wall System

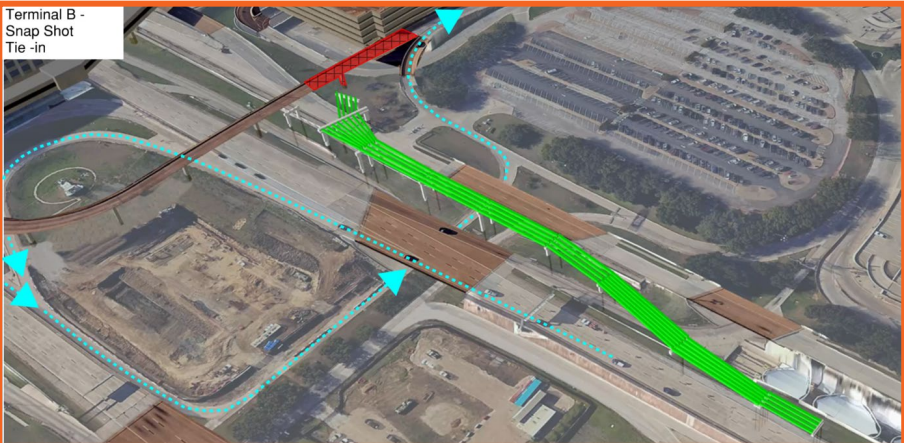
Widen and Lower the future alignment to  
make room for new SB to Terminal A.

Coordination with Commercial  
Development, Fire/DPS, and Building  
Tenants has occurred and on-going









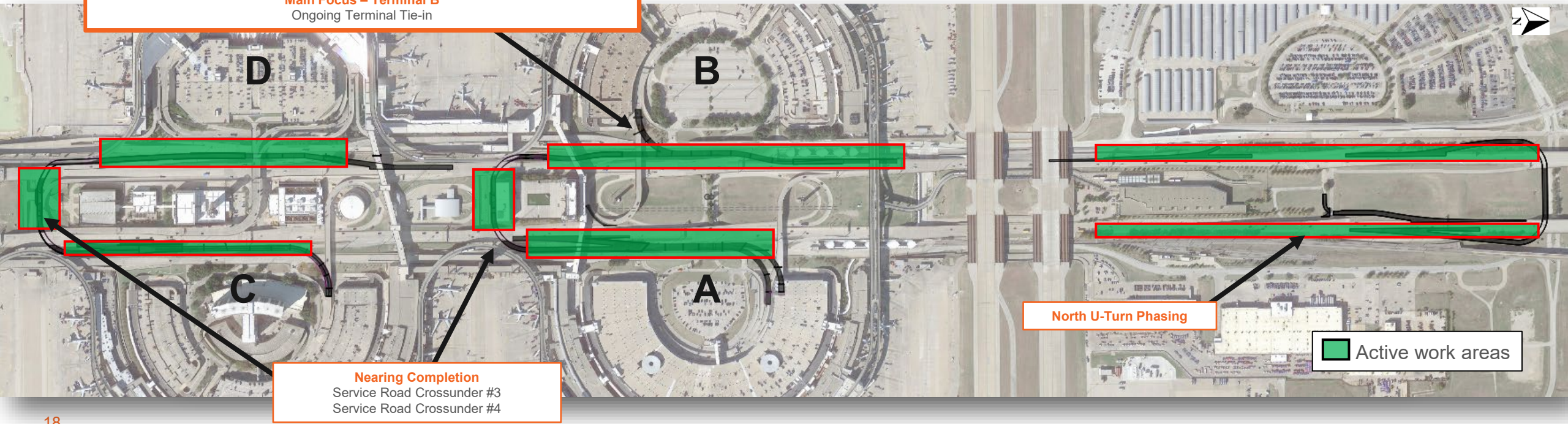
Main Focus – Terminal B  
Ongoing Terminal Tie-in

Projected Work to be Performed

- Focus on Terminal B – Performing 90-day Tie-In closure (Aug. - Oct.)
- Heavy Focus on completion of Business Center Bridge and TRACON Bridge Rebuilds
- High Mast Lights – Powering up and nearing completion of duct-Banks
- North U-Turn Construction – Widening of IP for new ramp tie-ins will be complete.
- Terminal A and C Bridge Superstructure – Beams, Decking, Railing on-going.

Impacts

- Daily/Nightly miscellaneous closures
- Required NB Single Lane closures for pavement tie-ins



Nearing Completion  
Service Road Crossunder #3  
Service Road Crossunder #4

North U-Turn Phasing

Active work areas



Projected Work to be Performed

- Constructing Rails at Trigg Lake and Bear Creek bridges, installing reinforcing steel and Slip forming concrete
- Installing Electrical hardware for lighting

Impacts

- Material deliveries for Trigg Lake Bridge from 20<sup>th</sup> Street and IP SBSR
- Material deliveries for Bear Creek Bridge via 20<sup>th</sup> Street and SH 360 @ Harwood
- Drainage crews/materials access via 20<sup>th</sup> Street, SH 360 @ Harwood and IP SBSR



C402 Rail Prep at Trigg Lake Bridge



Trigg Lake Bridge Concrete Rail Preparation

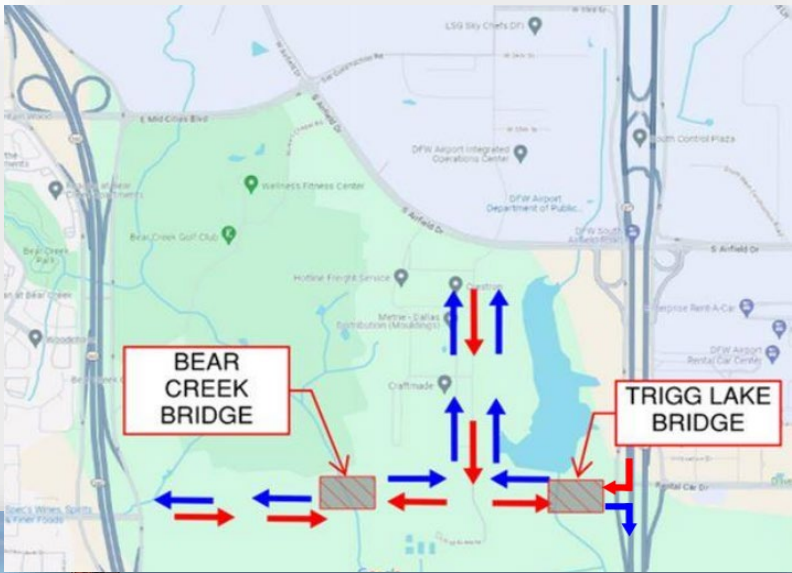


Projected Work to be Performed

- Traffic and Pedestrian railing construction at both bridges and Emergency Spillway Culvert
- Complete drainage and utility work
- Significant earthwork grading operations begin

Impacts

- Material deliveries for Trigg Lake Bridge from 20<sup>th</sup> Street and IP SBSR
- Material deliveries for Bear Creek Bridge via 20<sup>th</sup> Street and SH 360 @ Harwood
- Earthwork and drainage crews/materials access via 20<sup>th</sup> Street, SH 360 @ Harwood and IP SBSR



Pedestrian Rail for Emergency Spillway Stored On-Site



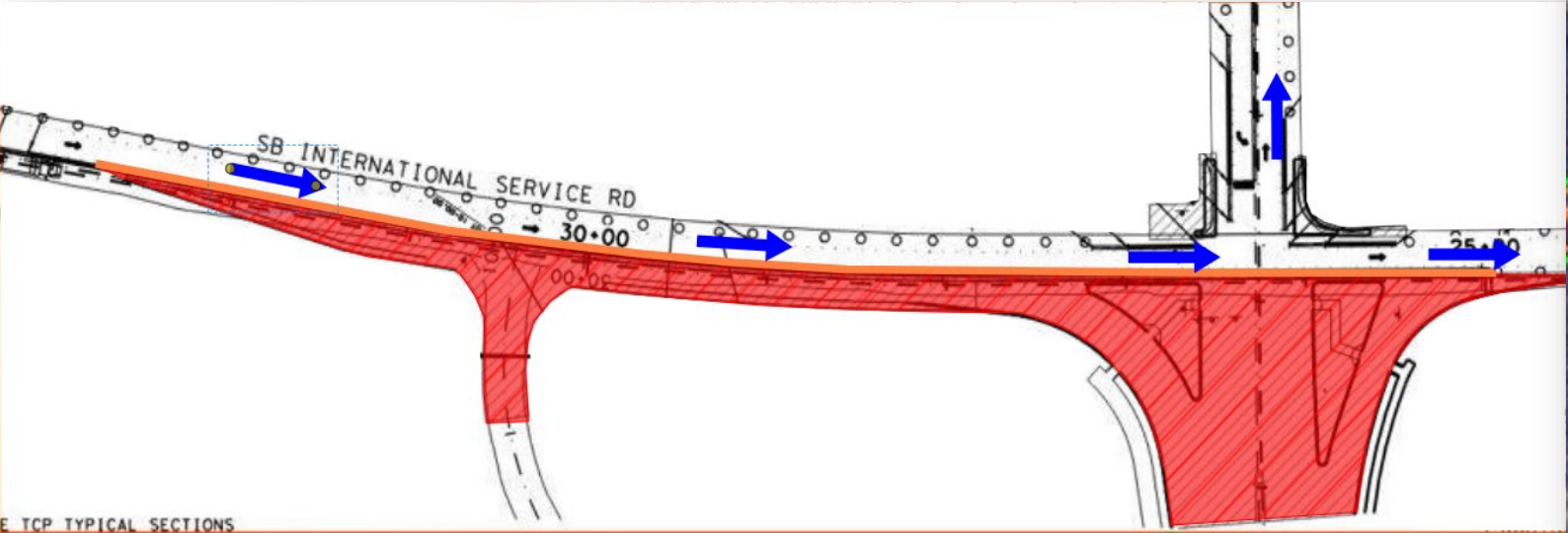


Projected Work Performed

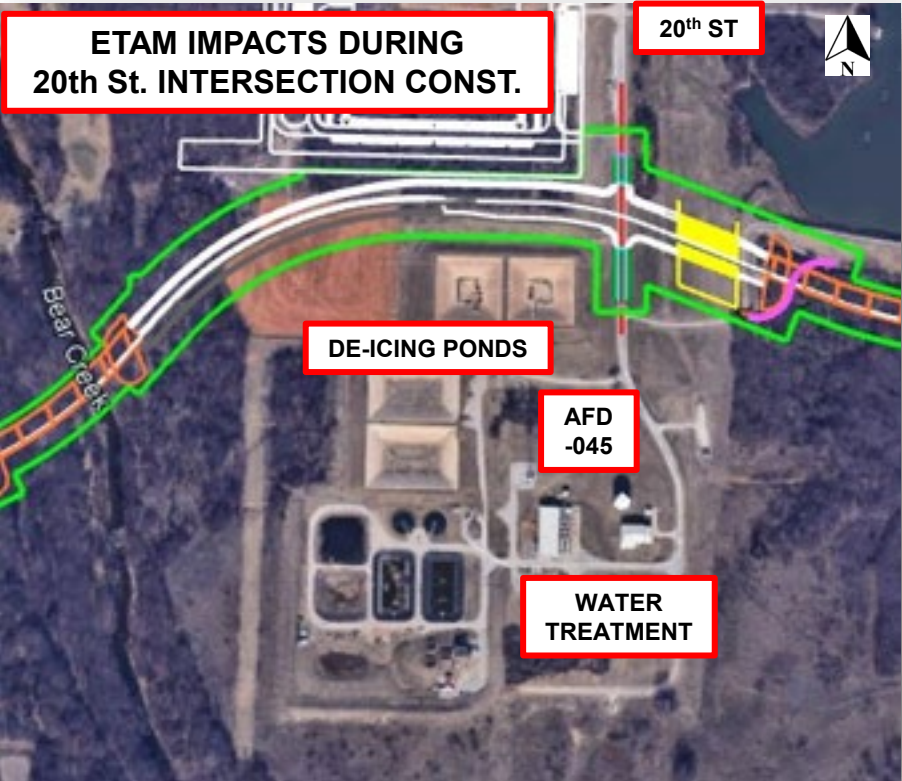
- Completed - Trigg Lake and Bear Creek Bridges, Utilities and drainage installations
- Earthwork Continues – Final grading and subgrade treatments
- HMAC Paving scheduled to begin in Spring 2025

Impacts

- Traffic impacts to Southbound Service Road. Rental Car Drive exit ramp reduced to one lane
- Earthwork / Paving at 20<sup>th</sup> Street intersection will affect access to water treatment plant and deicing materials yards. Access will be maintained with minor delays
- AFD-045 (SADF Storage) construction traffic will also be impacted by earthwork / paving



Lane Closure SB Service Road At Rental Car Drive







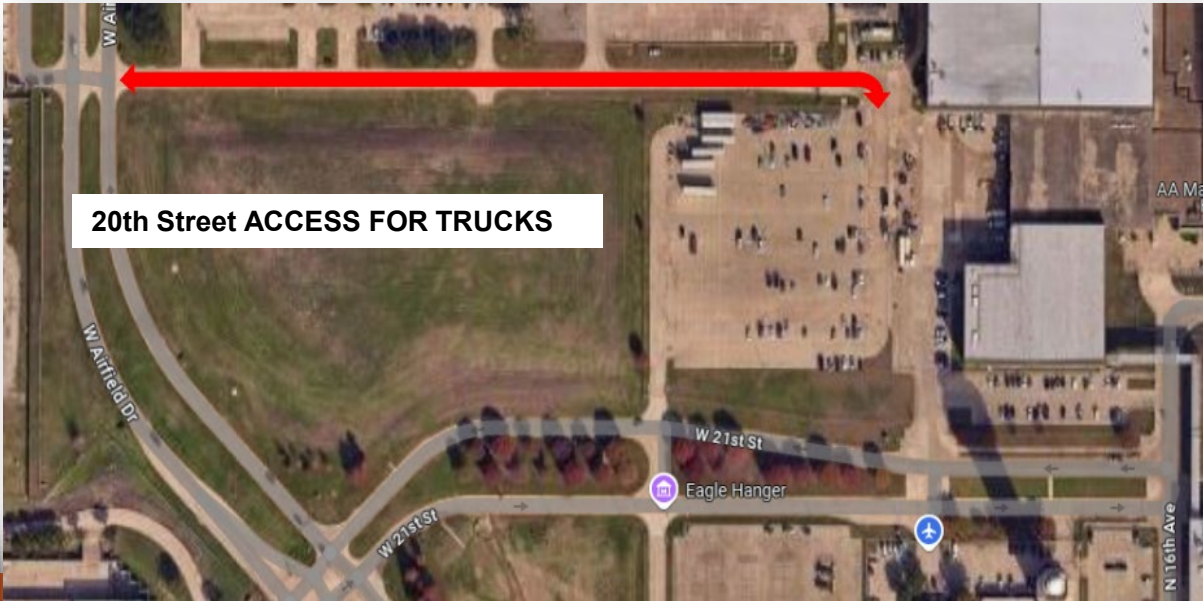


Projected Work to be Performed - Phase 1

- Eastbound – Placing Asphalt & starting CRCP work
- 1<sup>st</sup> Median Crossover – fine grading
- 2<sup>nd</sup> Median Crossover Half – Placing Asphalt & starting CRCP work

Impacts to Traffic and Operations

- **All truck traffic detoured to W 20<sup>th</sup> Street**
- W. 21<sup>st</sup> Street – Eastbound lanes closed w/ bi-directional traffic on Westbound lanes
- ATC Tower West access will be maintained during intersection pavement replacement
  - W. Airfield Drive – Northbound right turn lane closed.
  - No left turn for southbound trucks



WORK AREA







Projected Work to be Performed - Phase 2

- 1<sup>st</sup> Median Crossover Closed – Parking lot access via 20th Street
- 2<sup>nd</sup> Median Crossover Closed – Detoured via east parking lot entrance.
- Paving the closed westbound lanes

Impacts to Traffic and Operations

- W. 21<sup>st</sup> Street – Westbound lanes closed w/ bi-directional traffic on Eastbound lanes
- AA Hangers access shifted during pavement replacement
- W. Airfield Drive – Northbound right turn lane closed. No left turn for southbound trucks

Substantial Completion: August 1, 2025



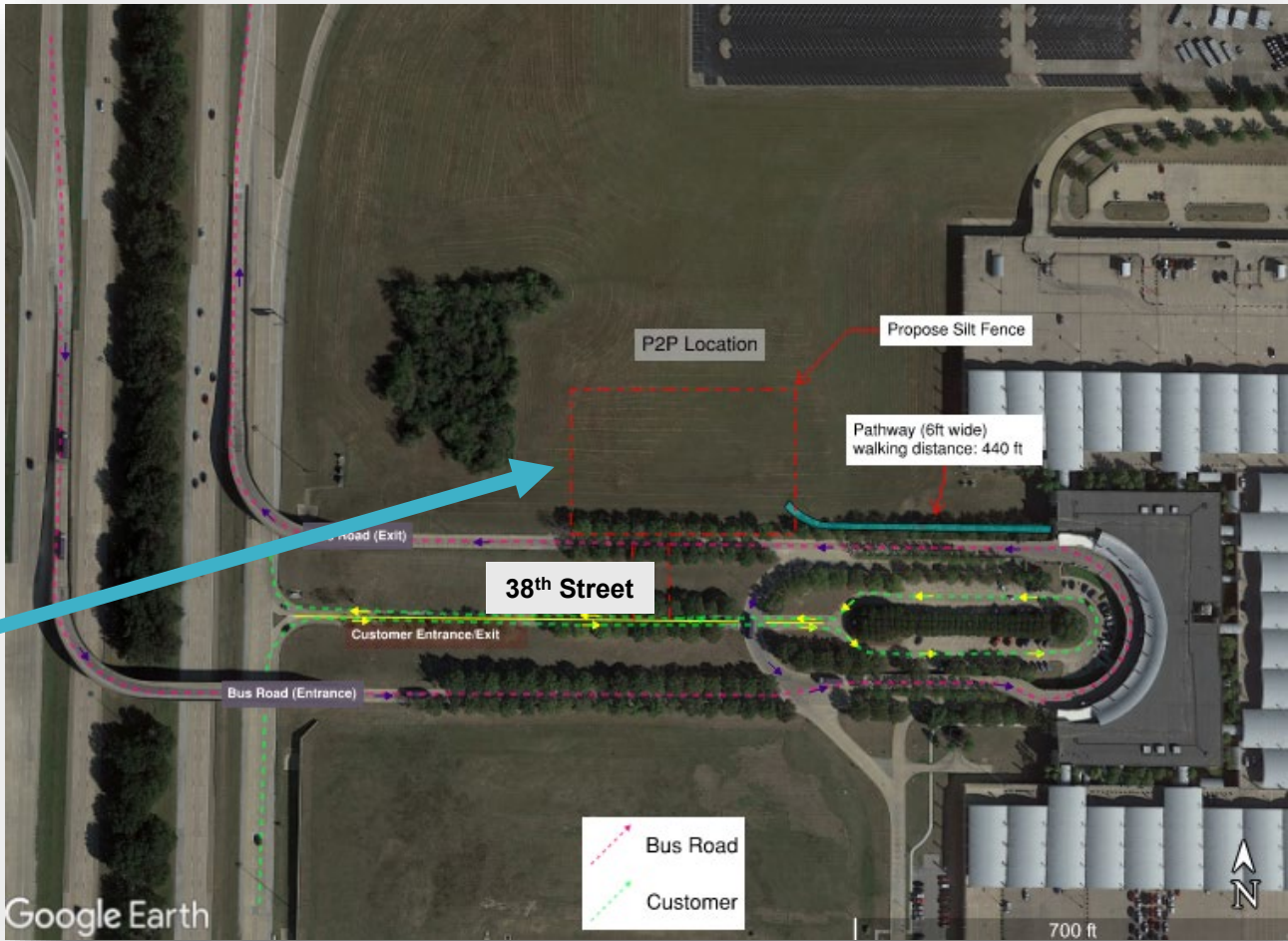


Projected Work to be Performed

- Begin removing trees, curb, pavement and topsoil removal
- Excavate per pavement sections & Hauling off excess material

Impacts to Traffic and Operations

- Traffic Controls are placed adjacent to E 38<sup>th</sup> St. for construction of the crossover
- Bus Road Exit will be reduced on both sides while maintaining a 12' lane minimum









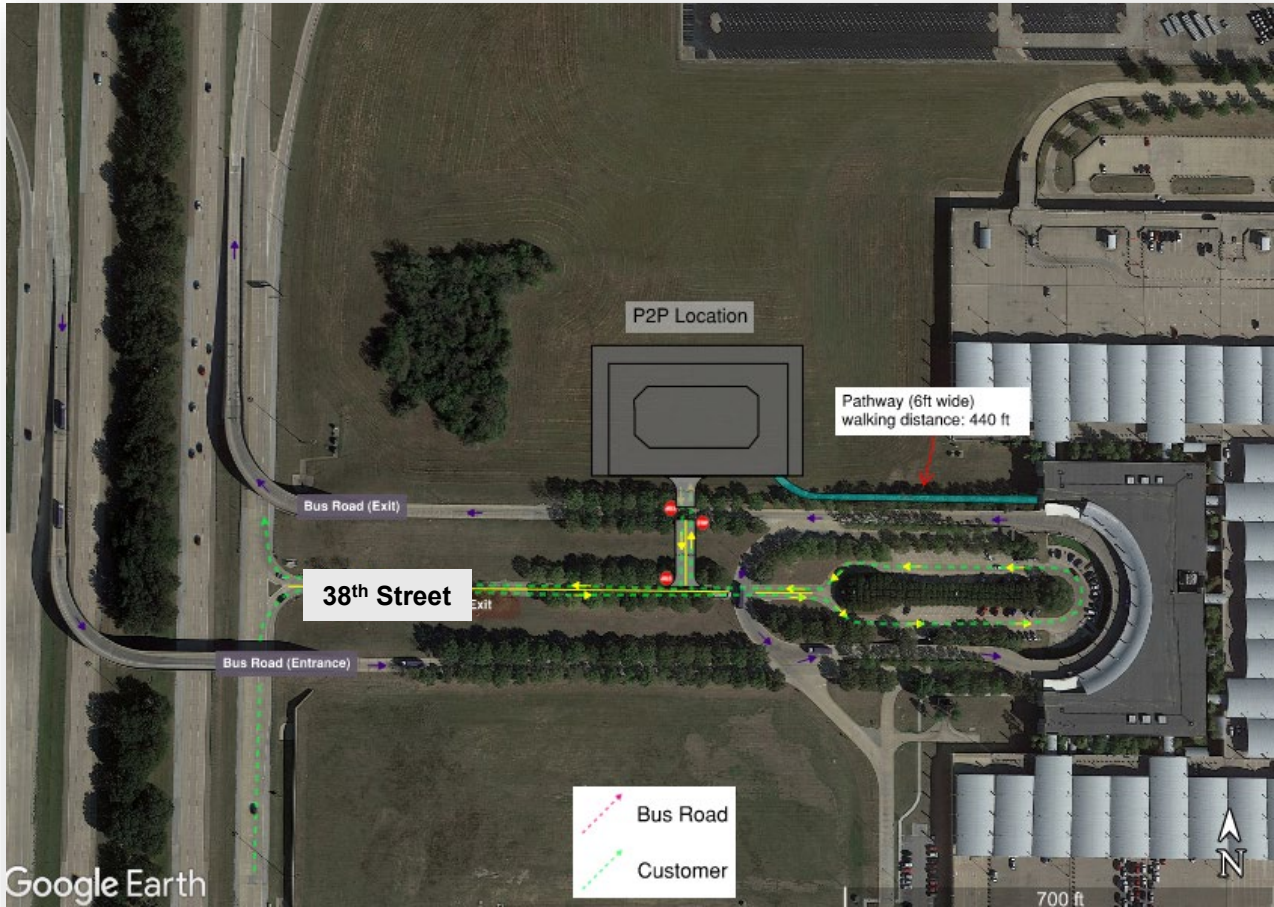
Projected Work to be Performed

- Concrete paving
- Roadside signage installation
- Parking lot striping
- Pull electrical wire, and set light poles
- Complete punch list

Impacts to Traffic and Operations

- Traffic Controls are placed adjacent to E 38<sup>th</sup> St. for construction of the crossover
- Bus Road Exit will be reduced on both sides while maintaining a 12' lane min.
- Remove Traffic Control Devices

Substantial Completion: End of July 2025





# FACILITIES PROGRAM







## AGENDA

- |                          |            |                  |
|--------------------------|------------|------------------|
| ① CONTROLS & ANALYTICS   | ③ AIRFIELD | ⑤ FACILITIES <<< |
| ② COMMERCIAL DEVELOPMENT | ④ LANDSIDE | ⑥ CTA            |



### Terminal D, Phase 2 – T8/T9

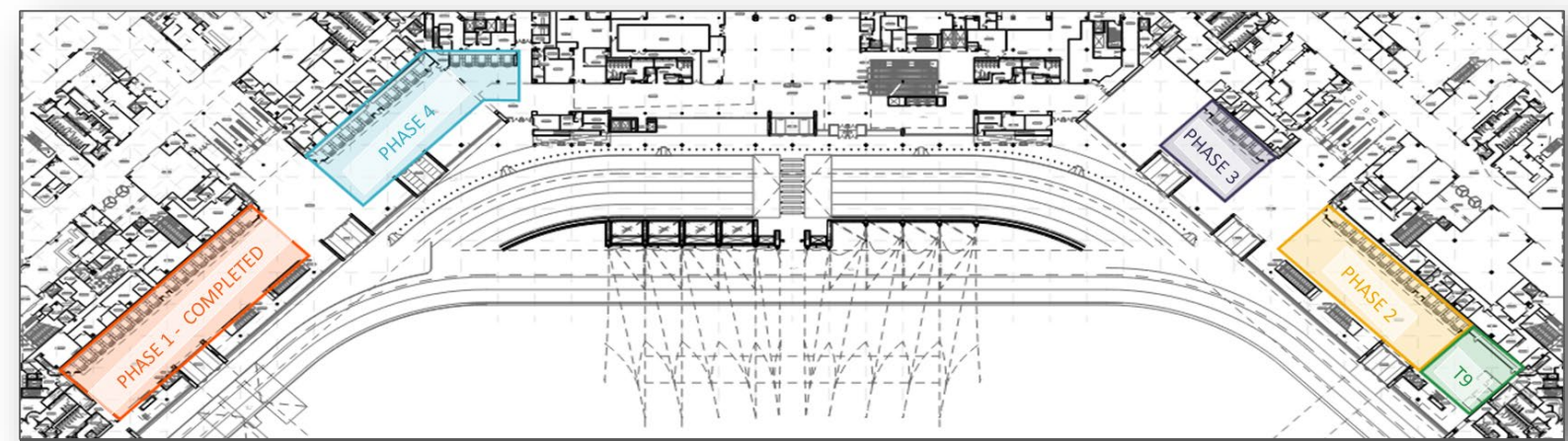
- Go Live: March 11

### Terminal D, Phase 3 – T7 and FIS

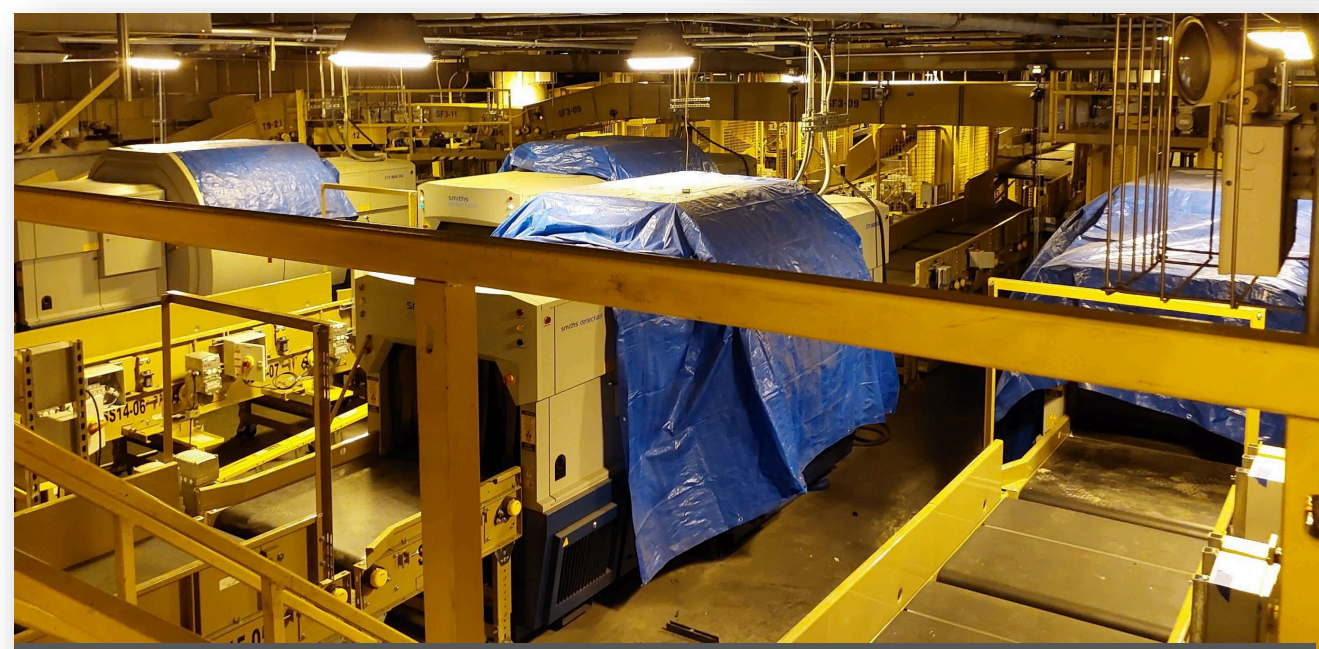
- Construction for temporary screening – Work Starts 3/17/2025

### Terminal A, POD C

- Commissioning and Testing Ongoing
- No temporary screening required



Terminal D Phasing Map



Terminal D – North Passive Matrix



Terminal A EDS Machine





## AGENDA

① CONTROLS & ANALYTICS

② COMMERCIAL DEVELOPMENT

③ AIRFIELD

④ LANDSIDE

⑤ FACILITIES <<<

⑥ CTA



### Terminal A, POD C

- Go Live: May 15, 2025
- No temporary screening required

### Terminal C, Phase 1

- Construction for temporary screening – April 2025
- Temporary screening North Lobby – Start June 2025

### Terminal D, Phase 2 – T8/T9

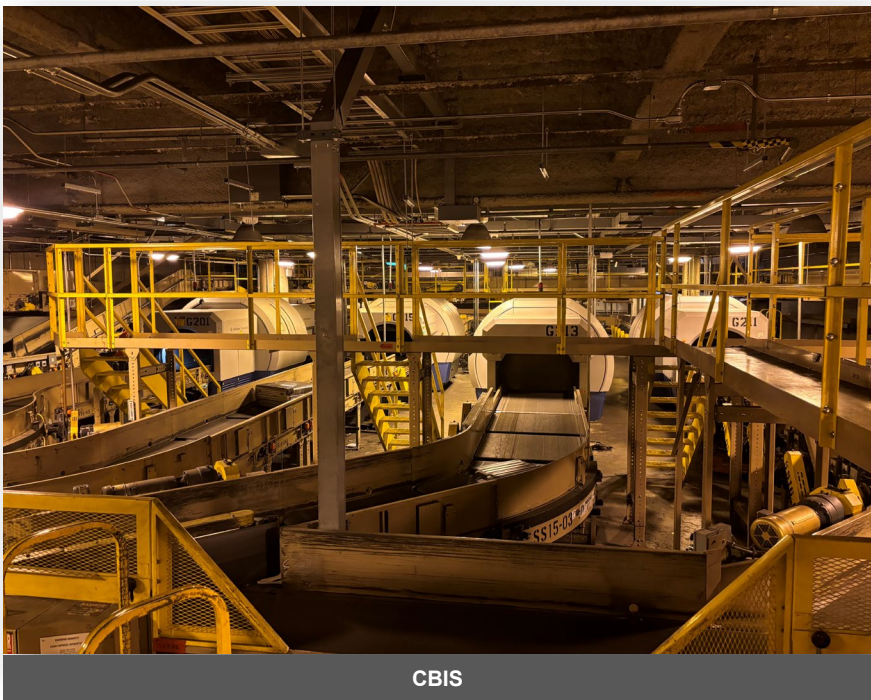
- CT-80 relocation to T7 – week of April 21, 2025

### Terminal D, T9 Ticket Counters

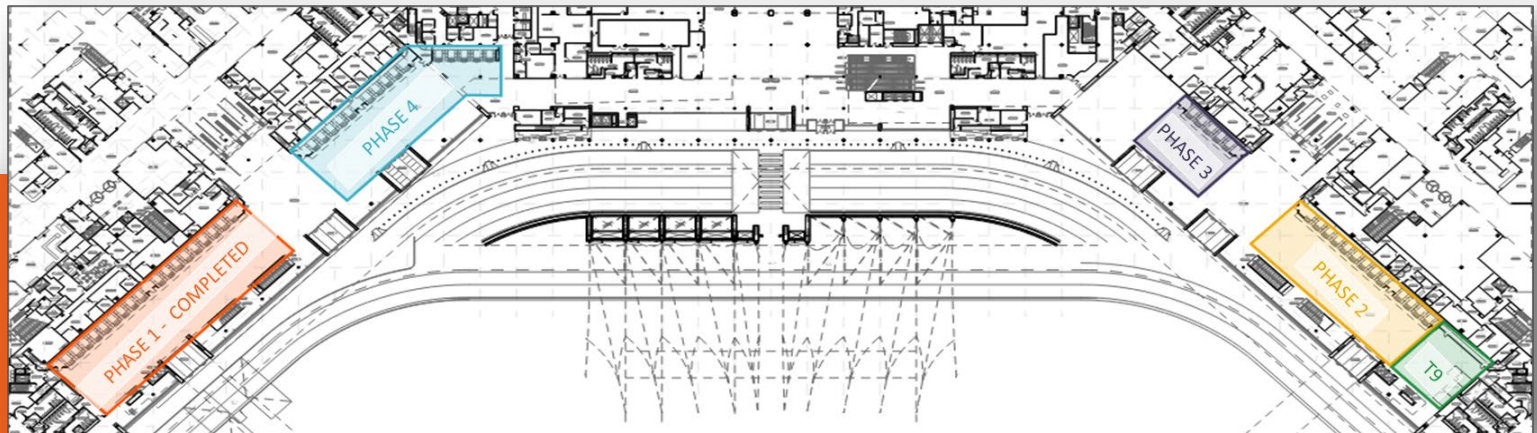
- Enabling work – Ongoing
- Concourse level work to begin after CT-80s relocation

### Terminal D, Phase 3 – T7 and FIS

- TSA delivery of CT-80s (FIS) – week of April 14, 2025
- TSA temporary screening operations – Start May/June 2025



CBIS



Terminal D Phasing Map







## AGENDA

① CONTROLS &amp; ANALYTICS

② COMMERCIAL DEVELOPMENT

③ AIRFIELD

④ LANDSIDE

⑤ FACILITIES &lt;&lt;&lt;

⑥ CTA

**Terminal D, T9 Ticket Counters**

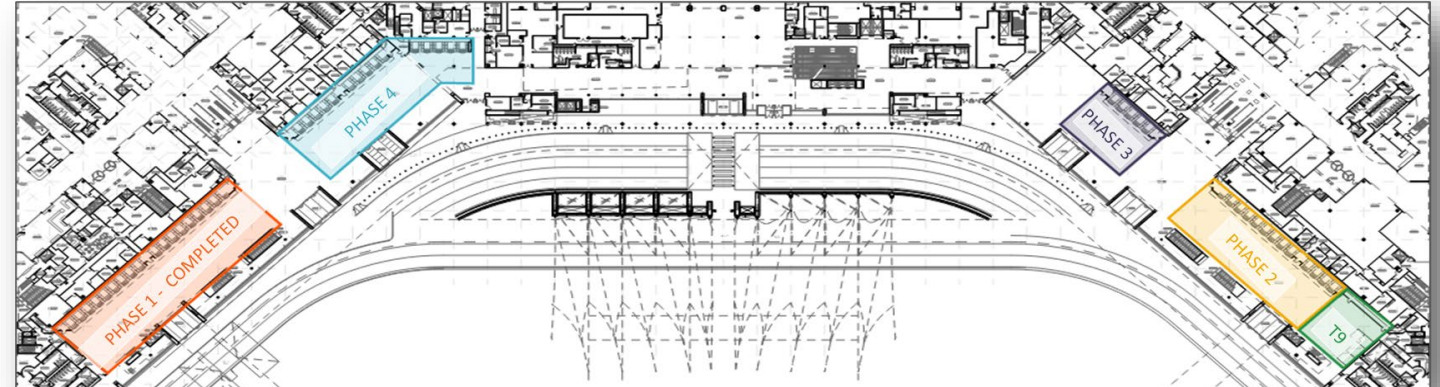
- Construction complete – late Aug/early Sep

**Terminal D, Phase 3 – T7 and FIS**

- Recap work (ramp level) - Ongoing

**Terminal C, Phase 1**

- Temporary screening North Lobby – Ongoing
- Recap work (ramp level) - Ongoing



Terminal D Phasing Map



Terminal D Phase 2 – New Automatic Tag Reader



Terminal D Phase 2 – New Motor Control Panels



HARP 1 – Three Restroom Rehab: E34, B19, A24

- E34 – Flooring and tiling work underway
- B19 – French drains and final plumbing rough-ins being installed
- A24 – Enabling Work (Ticket Stock Room) completed. AA moved in.
  - Abatement/Demo of existing restrooms; Lower-level scaffolding procurement

Restrooms Out of Service Schedule

- E34: October 2024 – May 2025
- B19: November 2024 – May 2025
- A24: February 2025 – September 2025

HARP 3 – Four Restroom Rehab: A38, D36, E7, A18

- **Concourse Level:** Mockup complete, A38 – 35% Design Review; D36 – Design started
- **Ramp Level:** Issue Contract / Procure Lift Station Pumps



Concept of Proposed Restroom



Flooring in Progress



HARP 1 – Three Restroom Rehab: E34, B19, A24

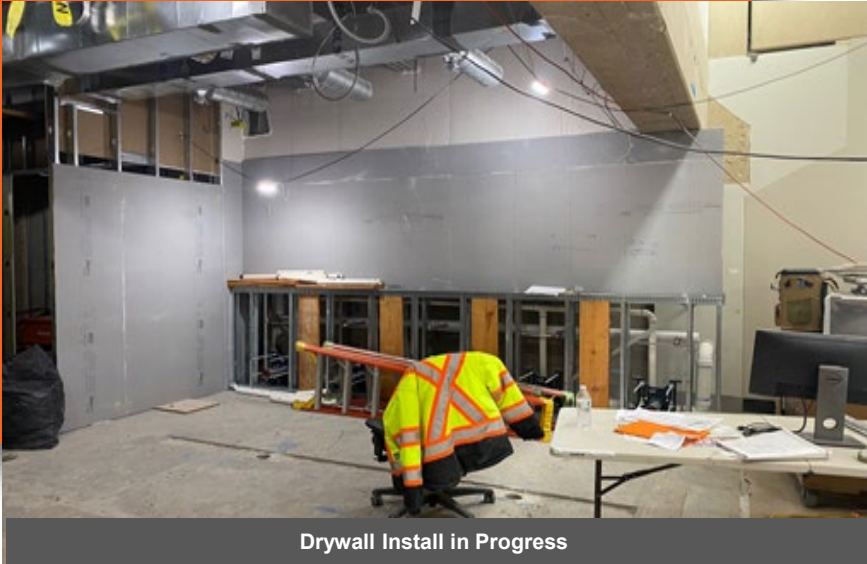
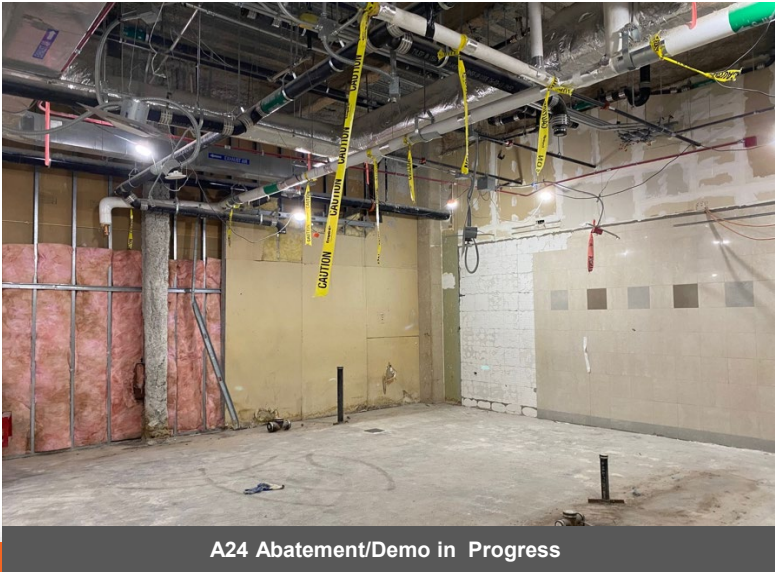
- Ongoing construction

Restrooms Out of Service Schedule

- E34: October 2024 – May 2025
- B19: November 2024 – May 2025
- A24: February 2025 – September 2025

HARP 3 – Four Restroom Rehab: A38, D36, E7, A18

- Concourse Level: Design completed for A38, D36 for permit release, E7 & A18 ongoing design
- Ramp Level: Coordination to Start Work with Concourse Level - July 2025





**HARP 1 – Three Restroom Rehab: E34, B19, A24**

- Construction continues in Terminal A

**Restrooms Out of Service Schedule**

- **E34: Returned to Service – May 2025**
- **B19: Returned to Service – May 2025**
- **A24: February 2025 – September 2025**

**HARP 3 – Four Restroom Rehab: A38, D36, E7, A18**

- **Concourse Level:** Design completed for A38, D36 for permit release, E7 & A18 ongoing design
- **Ramp Level:** Start Construction Work - July 2025



Concept of Proposed Restroom



B19 Break Room

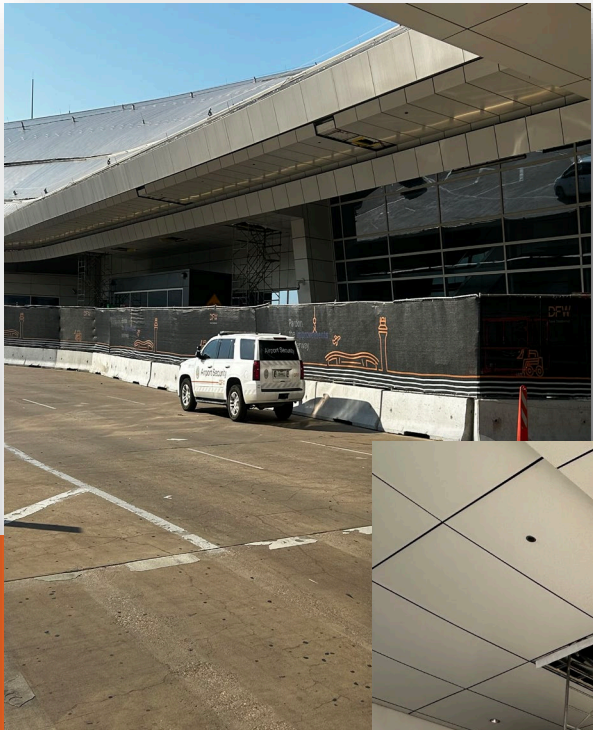


**Terminal D Ramp Level**

- Ramp Level Gatehouse Mechanical Rooms (Gates #33 – 40): March 8 – June 25, 2025

**Terminal D**

- Departure Level Curbside Overhang
  - 4 – 6 weeks per phase x 8 phases, working outside in, 1 segment at a time
    - Pause for Spring Break Moratorium
  - Phase 3: Inside terminal sprinkler connections after Spring Break
  - Phase 4: March 31 – May 21, 2025
    - Pause for Memorial Day Moratorium





Terminal D Ramp Level

- Ramp Level Gatehouse Mechanical Rooms (Gates #33 – 40): March 8 – June 25, 2025

Terminal D

- Departure Level Curbside Overhang
  - Phase 4: March 31 – May 21, 2025
    - Pause for Memorial Day Moratorium
  - Phase 5: May 28 – June 25, 2025 (Schedule Pending final Stakeholder Confirmation)
  - Phase 6: (Anticipated after Independence Day Moratorium) July 9 – August 27, 2025







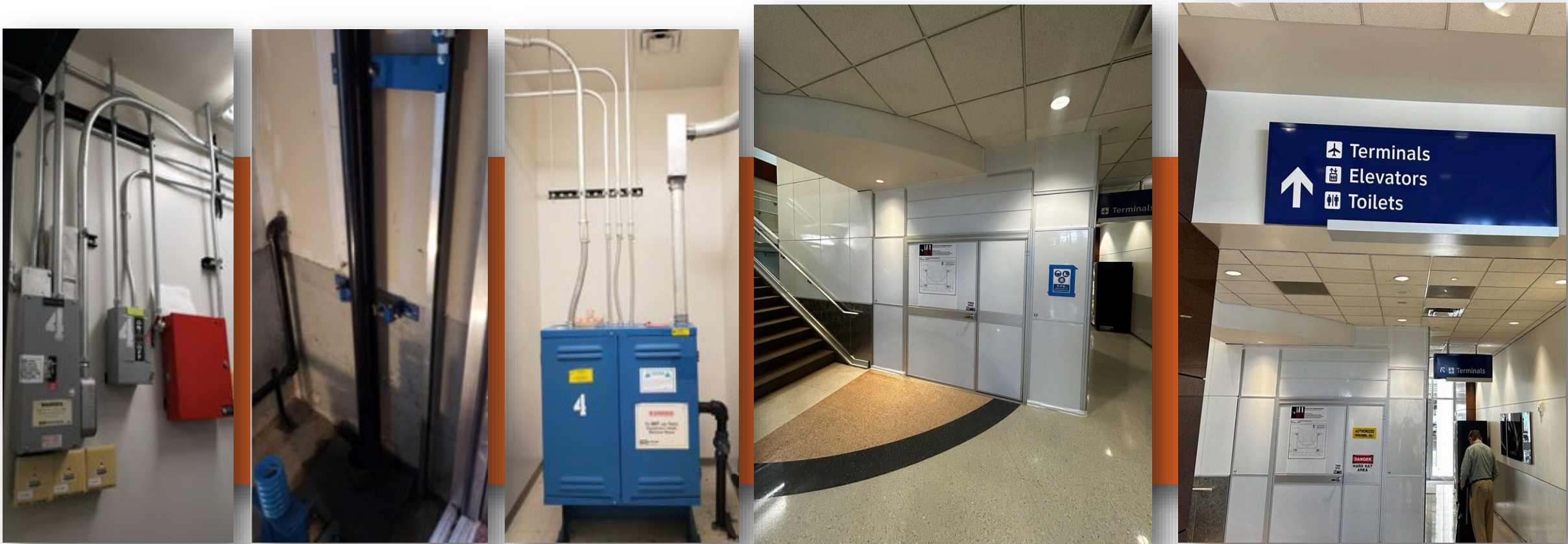


Elevator #4 Demolition & Refurbishment | April – August 2025

- Installation of new structural steel supports
- Begin Elevator Machinery and cab activities

Elevators #1 & #2 Decommission | August - October 2025

Substantial Completion: October 2025





- System Demonstration:**
- System Demonstration: February 6
    - Currently at Day 0 – Issues are to be expected up front
    - Train Availability positive trend
    - 1-2 Month process (30 consecutive days)

**Substantial Completion: April – May 2025**

**Final Completion: August – September 2025**







## AGENDA

- ① CONTROLS & ANALYTICS
- ② COMMERCIAL DEVELOPMENT

- ③ AIRFIELD
- ④ LANDSIDE

- ⑤ FACILITIES <<<
- ⑥ CTA

### Phase 1 - Gates A15 & A33 (and rework at A19)

- A33 Completion: March 10
- A15: Temp Closure March 11, 2025 – June 5, 2025
  - Moratorium Waiver Approved
  - Temp walls to be constructed during overnight hours
- A19 Rework (night work): June 7-8, 2025

### Substantial Completion – June 2025

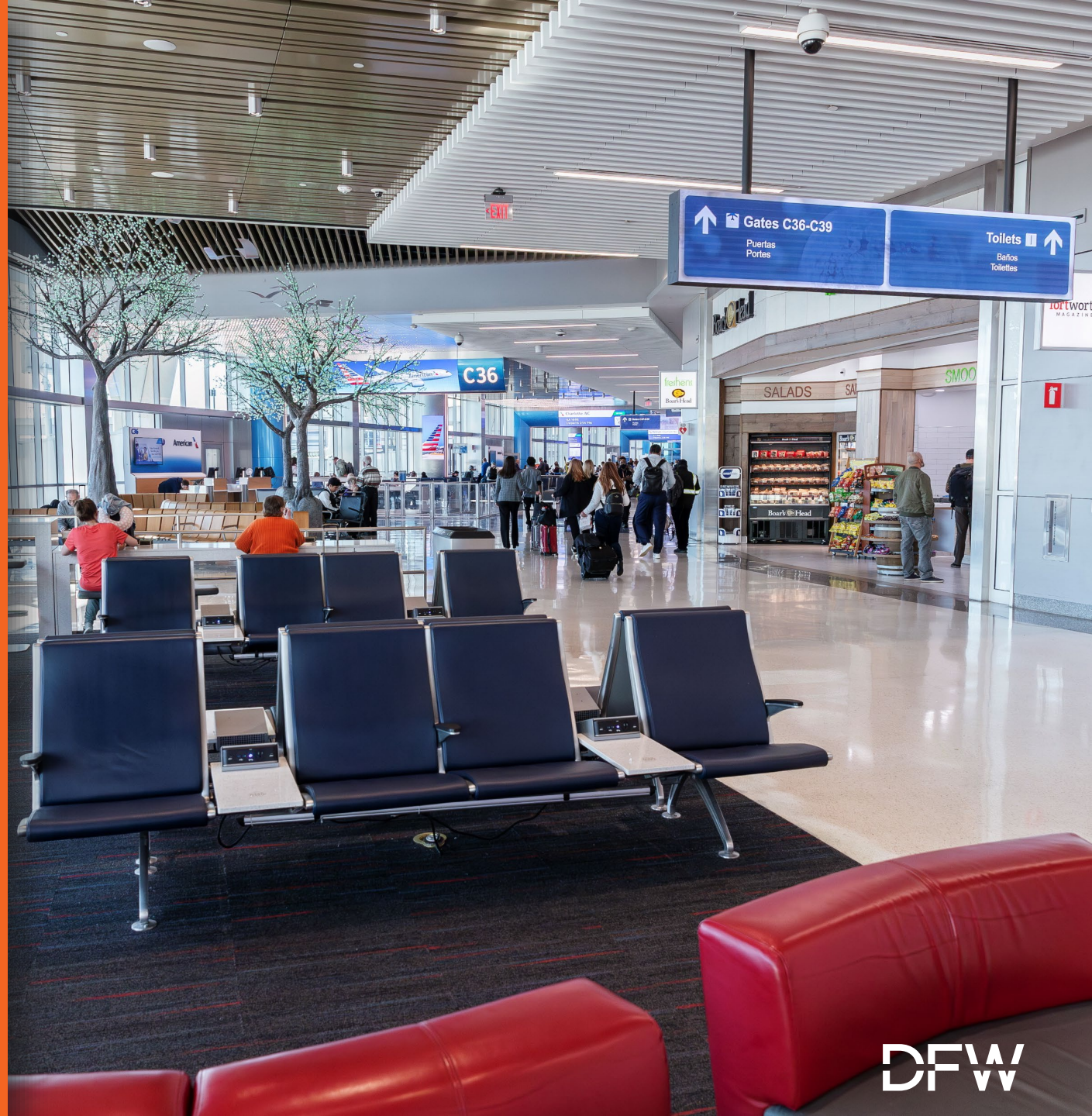
### Phase 2 - Gates B7 & B28

- 100% Design Completed: December 2024
- Solicitation: February 16, 2025
- Projected NTP: July 10, 2025





# CTA EXPANSION PROGRAM



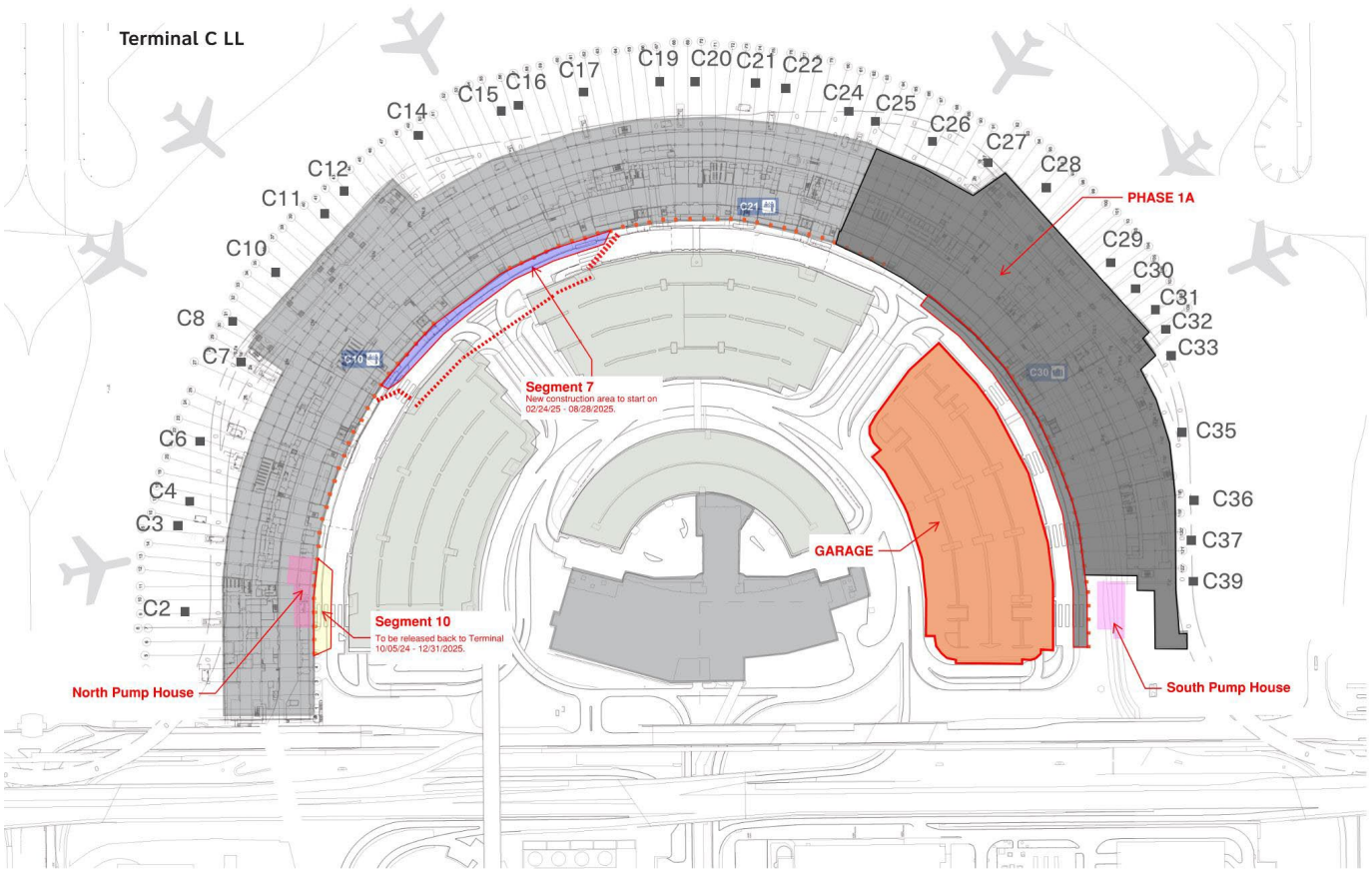


Segments 7

- Impacting two right inner lanes and sidewalk February 24, 2024 – August 28, 2025

Segment 10/North Pump House

- Impacting two right inner lanes and sidewalk October 5, 2024 – November 25, 2025



Segment 7 – CL 61 to 54



Segment 7 – CL 54 to 46





## AGENDA

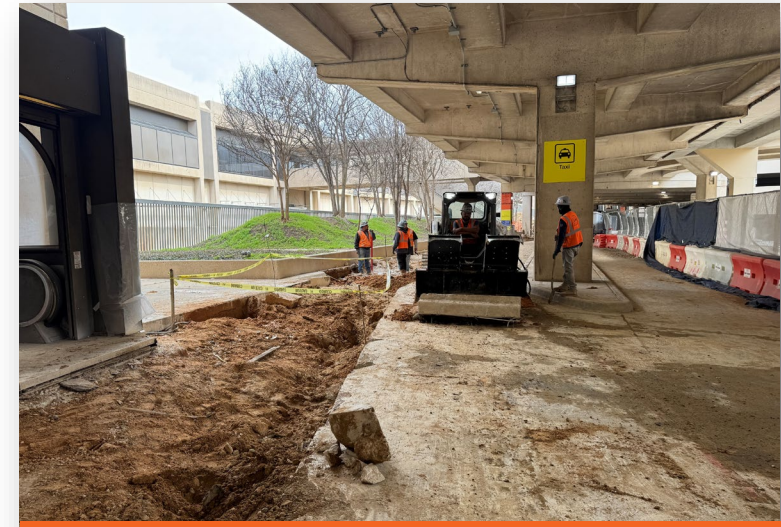
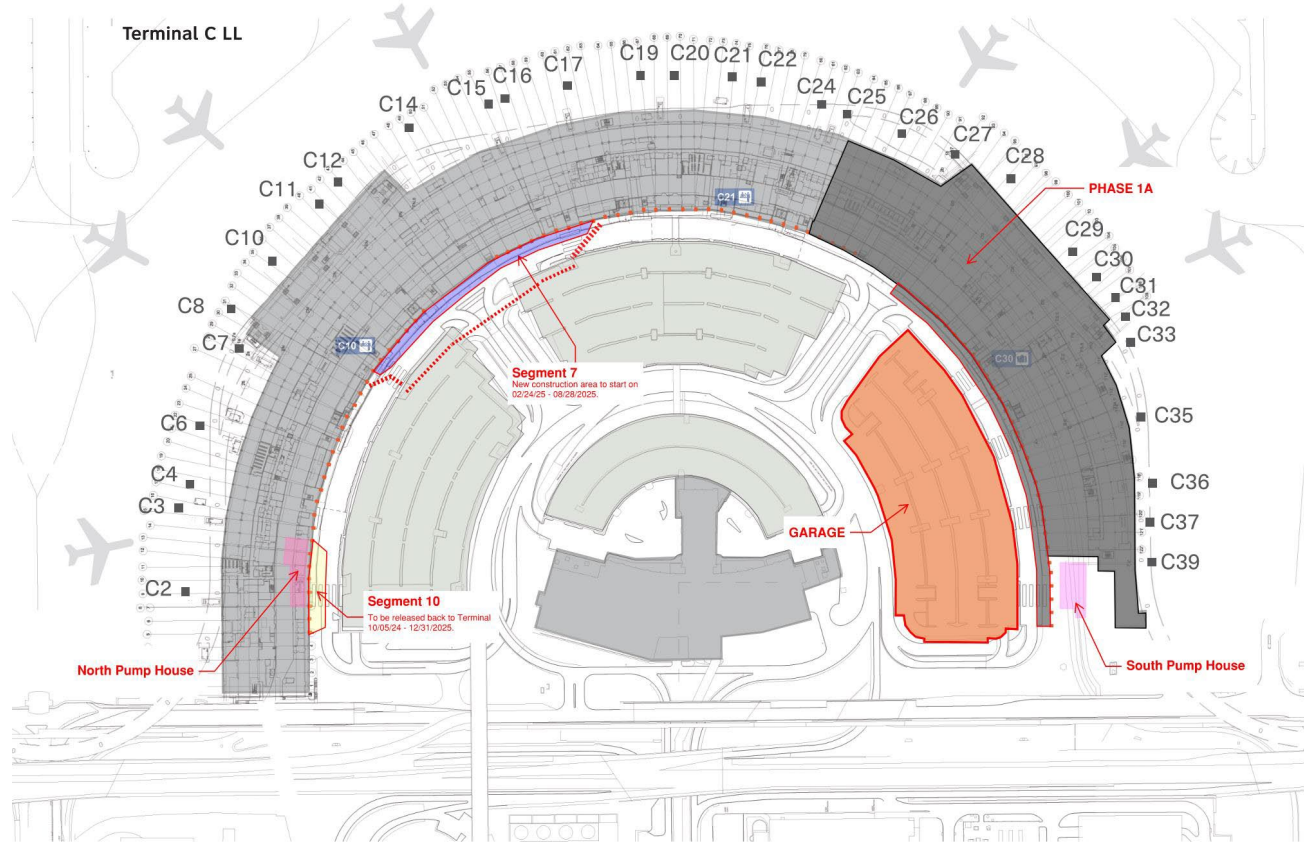
- |                          |            |              |
|--------------------------|------------|--------------|
| ① CONTROLS & ANALYTICS   | ③ AIRFIELD | ⑤ FACILITIES |
| ② COMMERCIAL DEVELOPMENT | ④ LANDSIDE | ⑥ CTA <<<    |

### Segment 7

- Impacting two right inner lanes and sidewalk February 24, 2025 – August 28, 2025

### Segment 10/North Pump House

- Impacting two right inner lanes and sidewalk October 5, 2024 – November 25, 2025



Segment 7 – CL 46 to 38



Segment 7 – CL 38 to 33







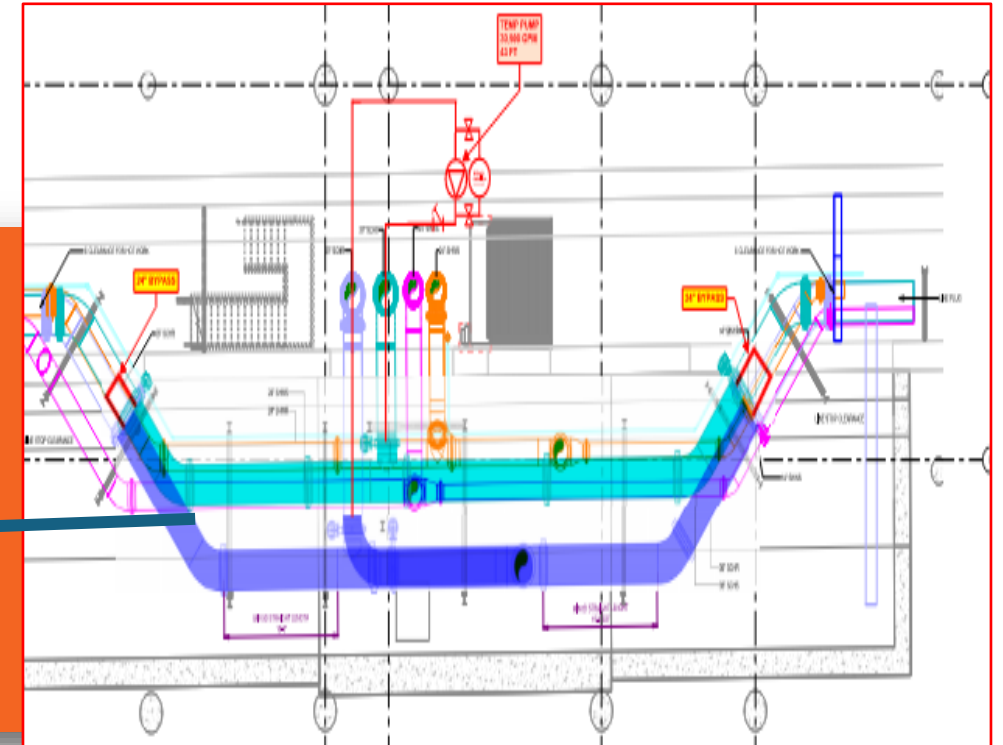
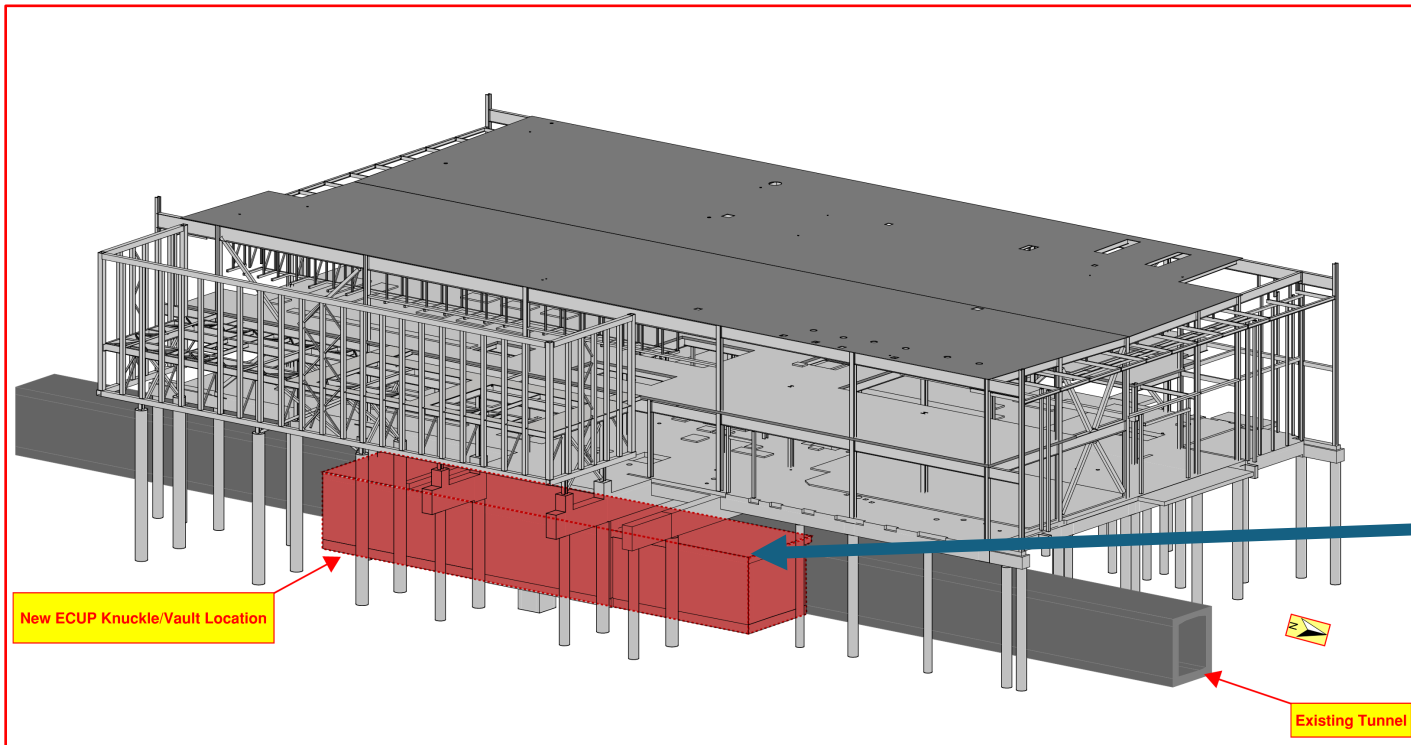


## AGENDA

- |                          |            |              |
|--------------------------|------------|--------------|
| ① CONTROLS & ANALYTICS   | ③ AIRFIELD | ⑤ FACILITIES |
| ② COMMERCIAL DEVELOPMENT | ④ LANDSIDE | ⑥ CTA <<<    |

**Temporary Chilled Water Utility Impairment (Tie-In) – Planned March 23, 2025 to March 28, 2025**

- Chilled Water main line shut down temporarily for the tie-in of the eCUP building to the chilled water system.
  - Utility Impairment will impact Chilled Water services to all terminals, Hyatt Regency & Grand Hyatt.
  - March 23, 2025 - Shutdown performed at night with a duration no longer than 2 hours @ 22:00 Hrs.
  - March 28, 2025 - Second Shutdown to take place with a duration no longer than 2 hours @ 22:00 Hrs.
  - A reduce pressure and flow is anticipating from 3/23/25 to 3/28/25







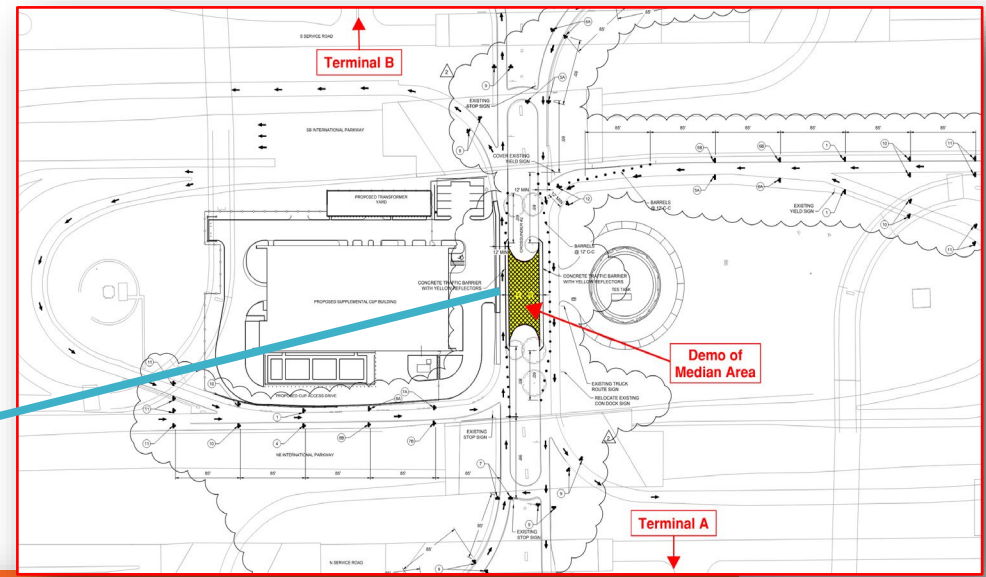
# AGENDA

- ① CONTROLS & ANALYTICS
- ② COMMERCIAL DEVELOPMENT
- ③ AIRFIELD
- ④ LANDSIDE
- ⑤ FACILITIES
- ⑥ CTA <<<



## Median Traffic Closure – Planned Start by Late April of 2025

- Demo of Median Area along IP / Cross-under #2 Roadway to construct passage between eCUP and TES Tank  
(Per Phase 2 of the eCUP Approved Traffic Control Plan).
  - Barricades extended past existing roadway; traffic redirected towards shoulder areas.







## AGENDA

① CONTROLS &amp; ANALYTICS

② COMMERCIAL DEVELOPMENT

③ AIRFIELD

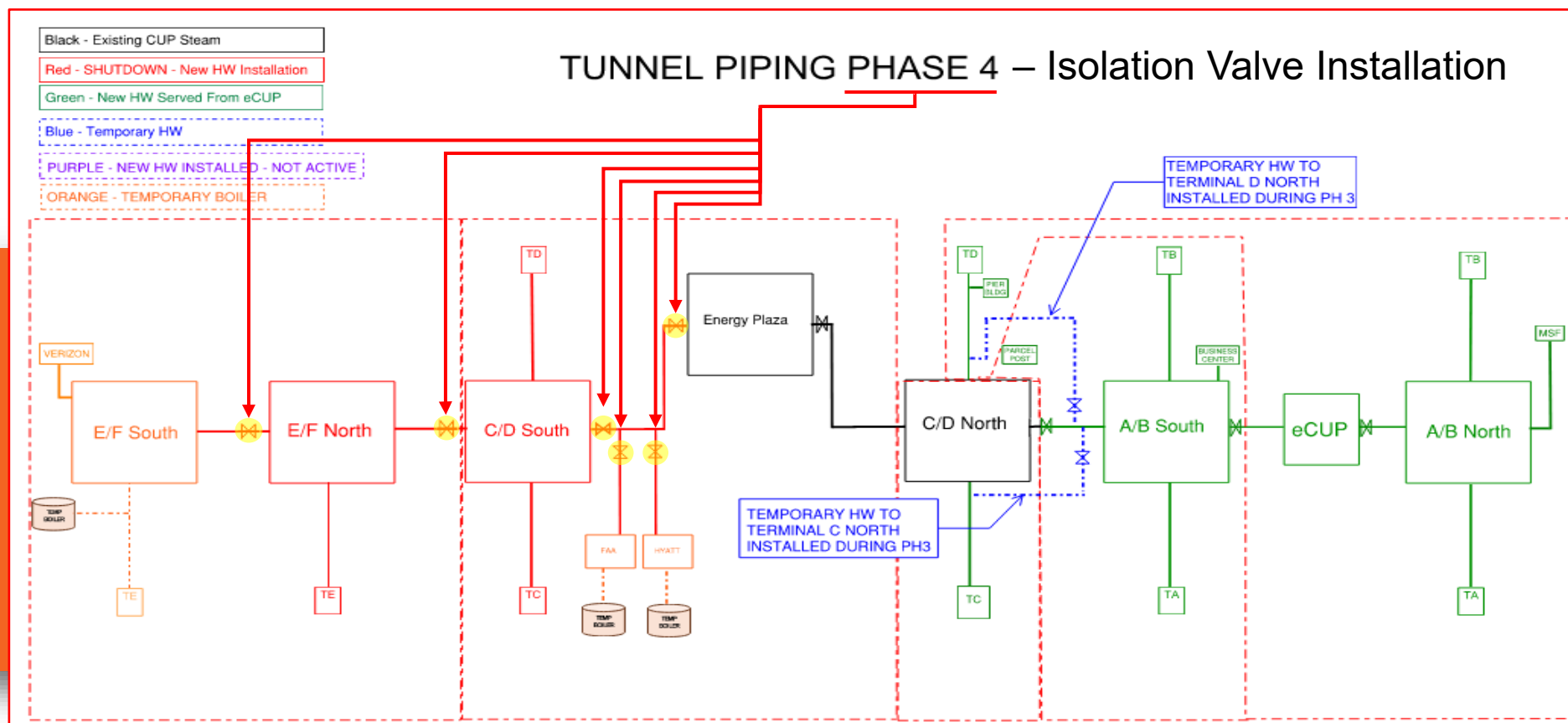
④ LANDSIDE

⑤ FACILITIES

⑥ CTA &lt;&lt;&lt;

### Tunnel Phasing Plan (Phase 4: South Isolation Valve Cut-In) – (2-Week Duration) Planned Start by September of 2025

- Phase 4 of the Tunnel Phasing Plan is an enabling phase that will involve shutting down the steam system from the Energy Plaza to the E/F-South Vault. Isolation Valves will be installed in the steam piping to accommodate future phased work
  - Before & During Phase 4, Temporary boilers will be Operational to provide an uninterrupted heating hot water service to Terminal E, FAA/Tracon, and Hyatt Regency.
  - Heating hot water will be provided by the eCUP Plant to Terminals A & B and C & D (through North Branch Tunnels).
  - Duration of steam shutdown is anticipated to last within a total period of 1-2 weeks







AGENDA

- ① CONTROLS & ANALYTICS
- ② COMMERCIAL DEVELOPMENT
- ③ AIRFIELD
- ④ LANDSIDE
- ⑤ FACILITIES
- ⑥ CTA <<<



A2 Package: Gate A18, A19, A20 Enabling

- A19/20 Gates - Opened - March 7, 2025

A3 Gate - A13 Enabling

- Package Scope:** Interior hold room renovations, install new curtain wall and boarding door, demo existing concessions for future boarding lounge.

A4 Package – Pier Footprint:

- Capture Gate A16 / A17 March 12, 2025.

A6 Package: Skylink Area

- Phase 1 Area Capture: March 25, 2025

Concessions Impact Takeover *\*All dates are subject to change and are being coordinated with DFW concessions team*

- Destinations – March 25

Ling and Louie’s – March 25

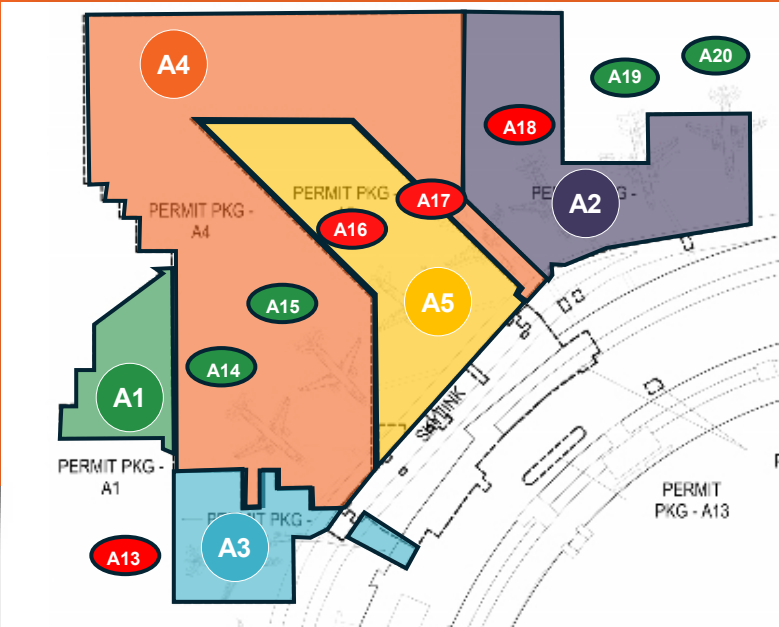
The Bubble Coca-Cola – March 25
- Qdoba – March 25



A18 Underground Utility Structure



Pier Overall Fab Yard



A13 Hold Room



**A2 Package: Gate A18, A19, A20 Enabling**

- A18 Reopen targeting: May 23, 2025
- Complete Package: May 23, 2025

**A3 Package: Gate A13 Enabling**

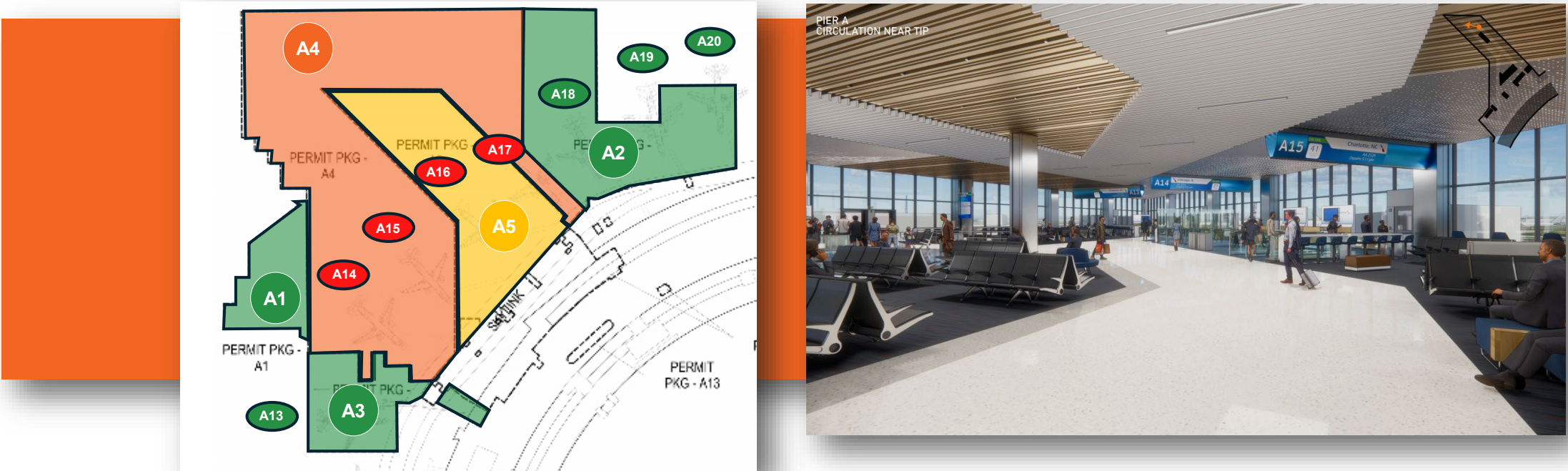
- Gate A13 Reopen: Apr 17, 2025
- Complete Package: Apr 17, 2025

**A4 Package: Pier A Apron, Underground, Structure**

- Start Foundations Airside: April 15, 2025
- Shutdown Gate A15: Apr 18
- Capture Gate A14 May 24, 2025
- Module Transport: Sep 11, 2025

**A6 Package: Skylink Area**

- Phase 1 Area Capture Mar 25, 2025.



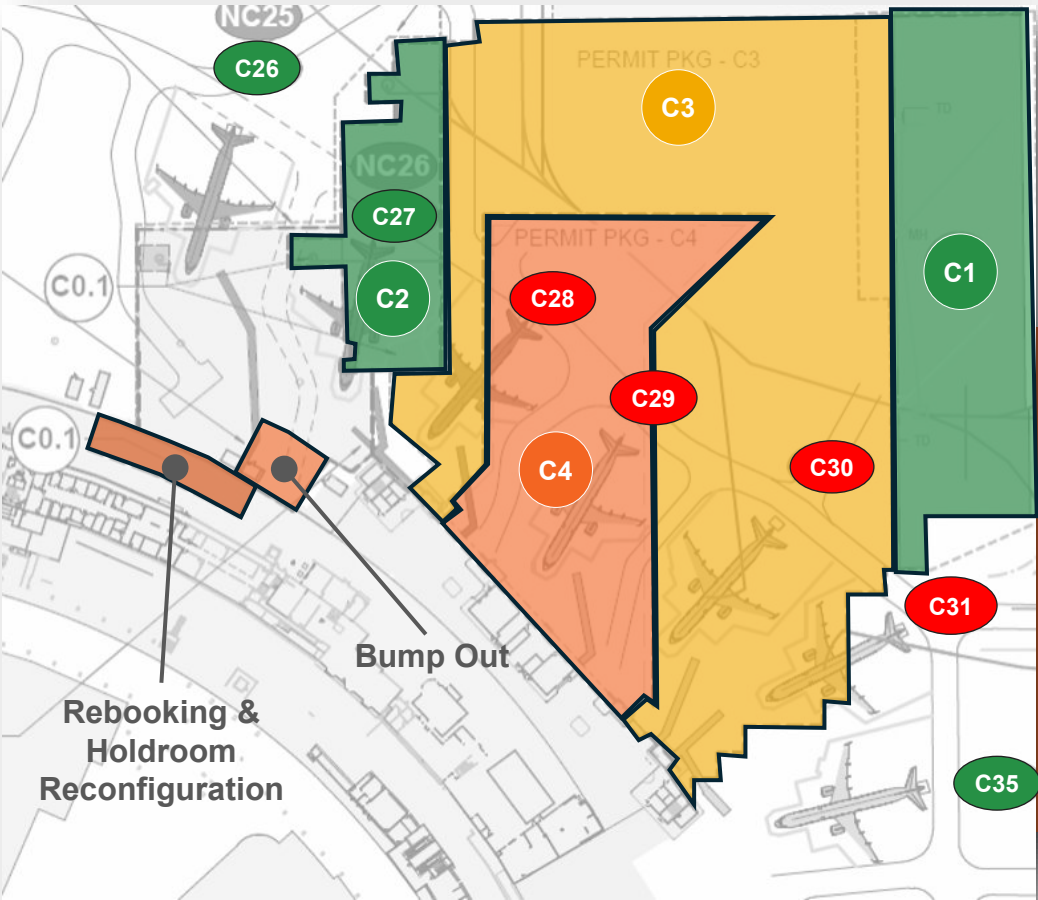


C3 Package – Pier C Apron, Below Grade Activities, Building Structure

- Foundations (piers and micropiles), Underground Utility & Jet Fuel Line and Vault activities are ongoing
- Starting building pad work on March 11, 2025, to prep for the Module move

C4 Package – Pier C Core, Shell, Interiors

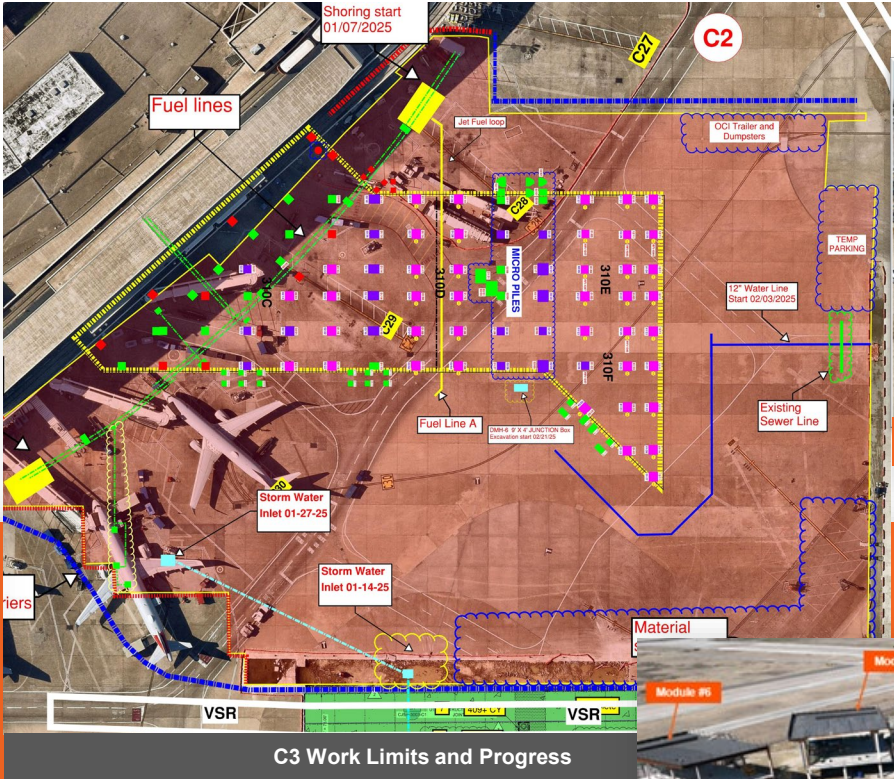
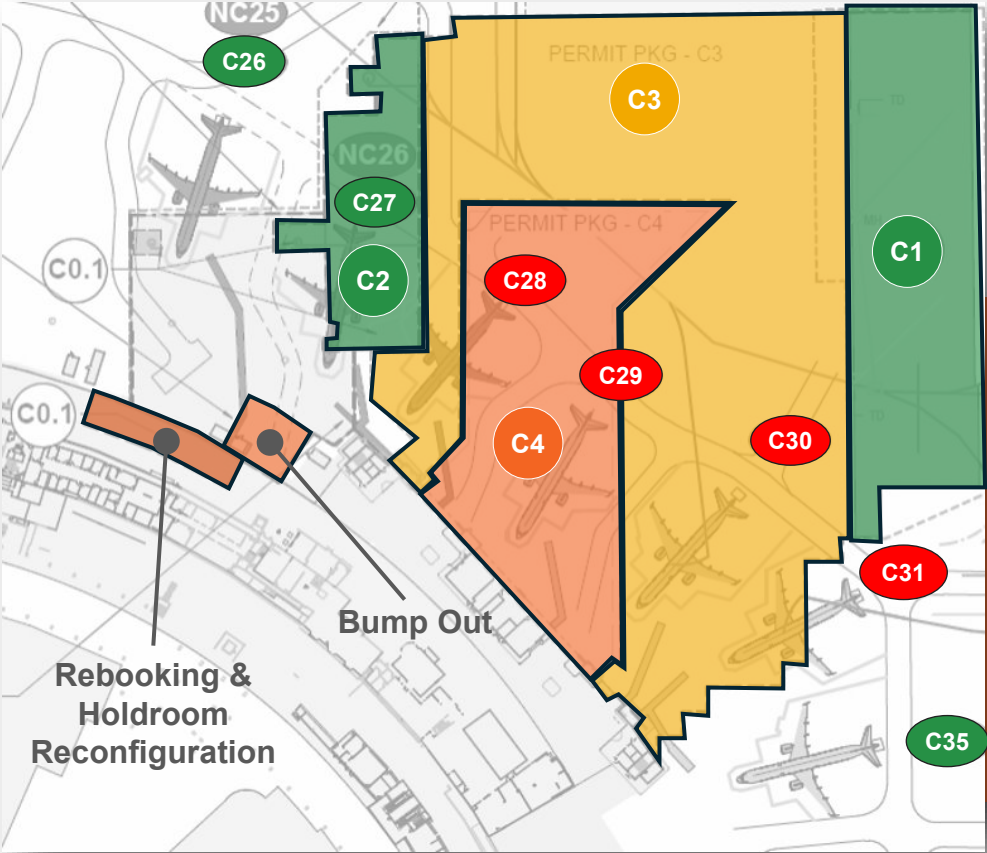
- MEP, IT, HVAC and Roofing activities ongoing at Fab Yard C





C3-C4 Package

- Module Transportation week of Apr 14, 2025
- Complete Module Transport: May 7, 2025
- Complete C3 Package: Sep 2025



C3 Overall Progress



Fab Yard C Overall Progress







[P2] Passenger Corridor – Full Substantial Completion: June 2025

- Passenger Corridor open for circulation without bump out.
- Bump-Out Work Ongoing - Curtain wall installation, Micro piles.

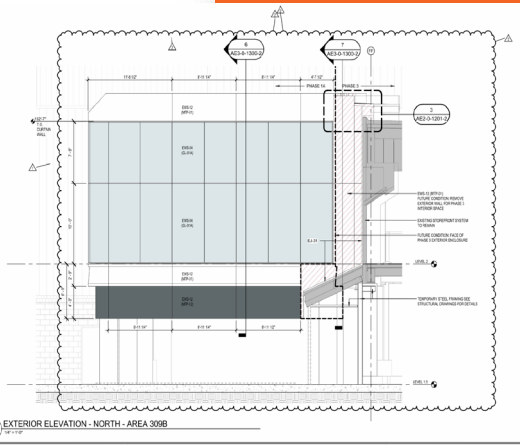
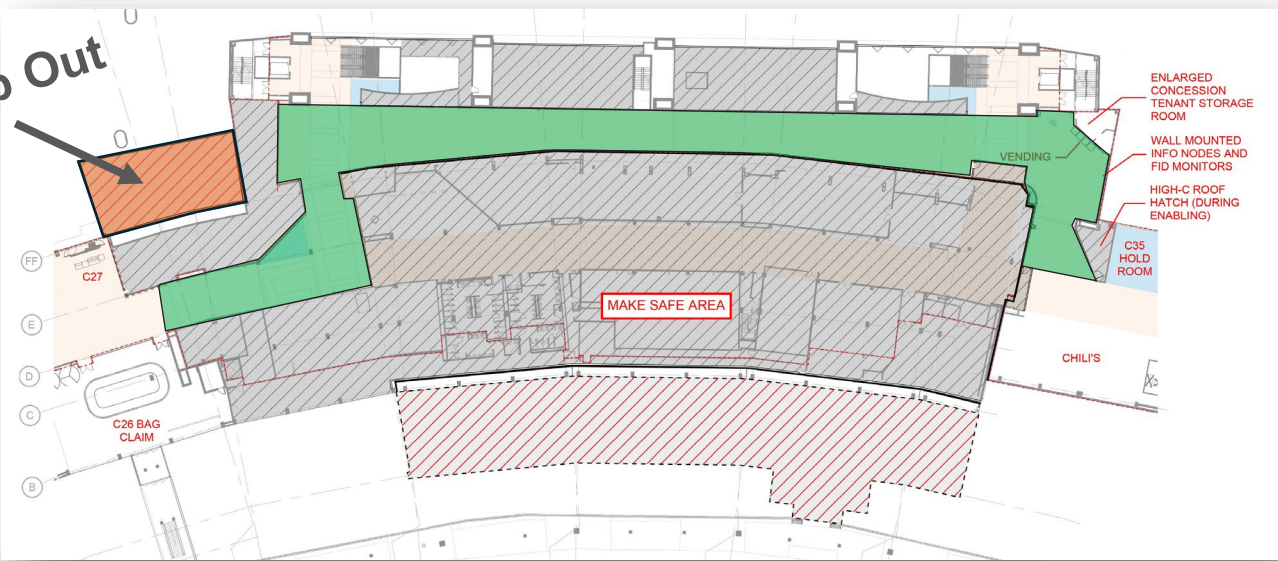
[P3] Construction Access Gate - Substantial Completion: May 2025

- FRP permanent guard booth foundation and power

[P4] Demo & Make Safe: Demo Starting April 2025

- Selective & Structural Demolition of existing Concourse and ramp areas
- Waterproofing of concourse floor
- New Foundation and Reinforcement on ramp level

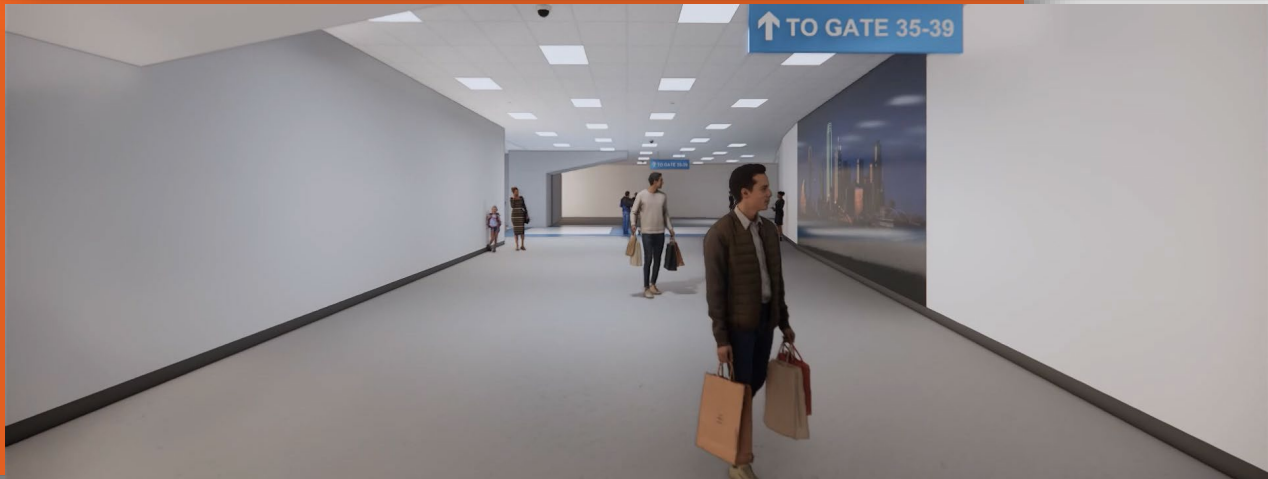
Bump Out



[P2] Passenger Corridor-Bump Out



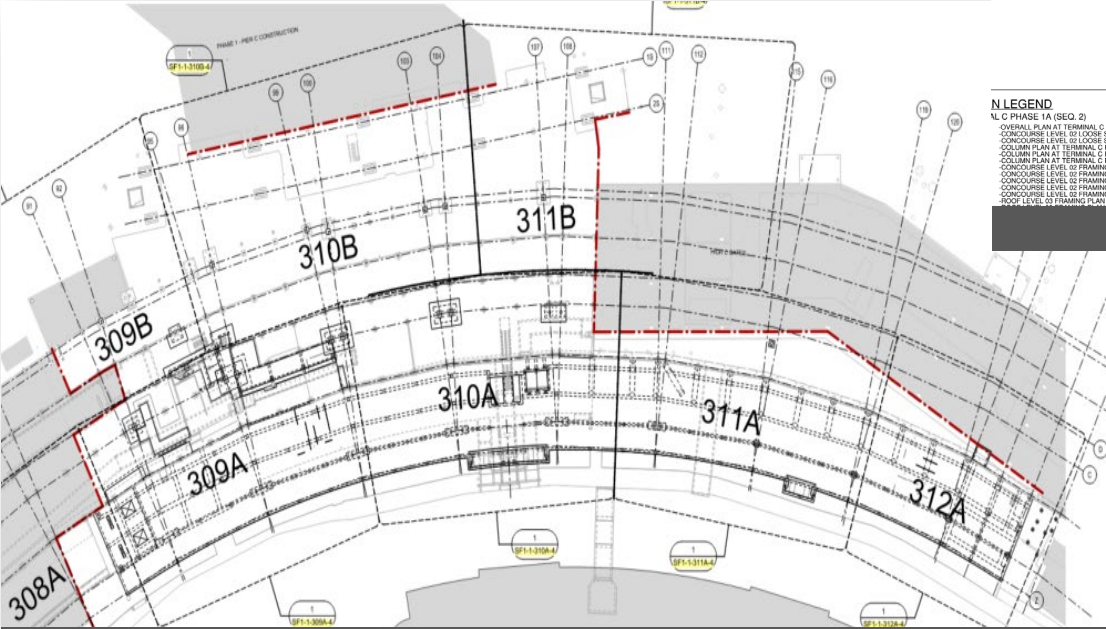
[P2] Bump out



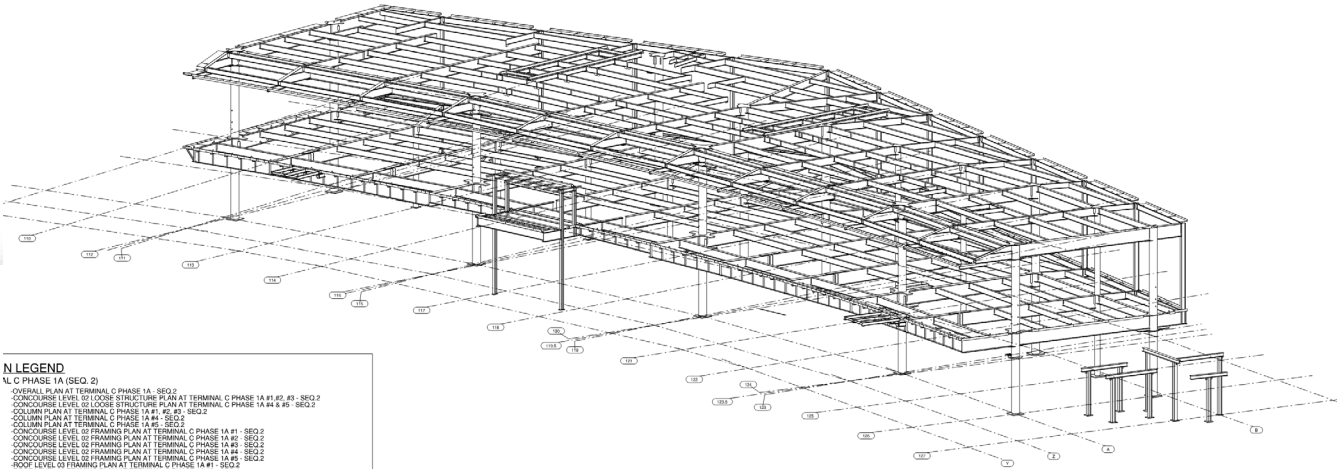


[P4] Enabling, Core & Shell:

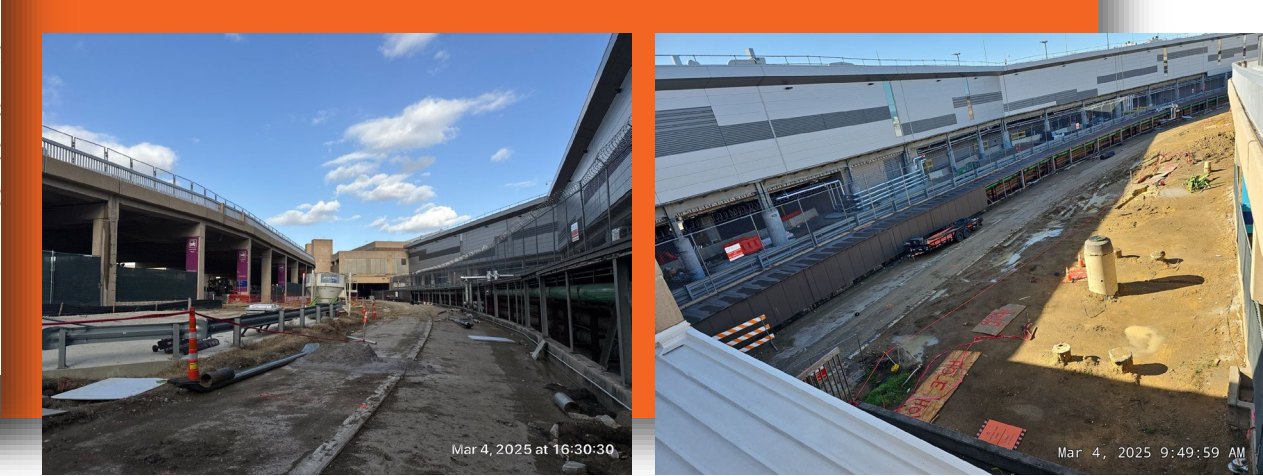
- Structural Demo and demolition of existing utilities.
- Underground utility installations.
- Foundations in GL-AB footprint.
- Structural steel, roofing, Curtainwall in south infill area.



[P4] New Foundations



[P4] Steel Erection-South Infill



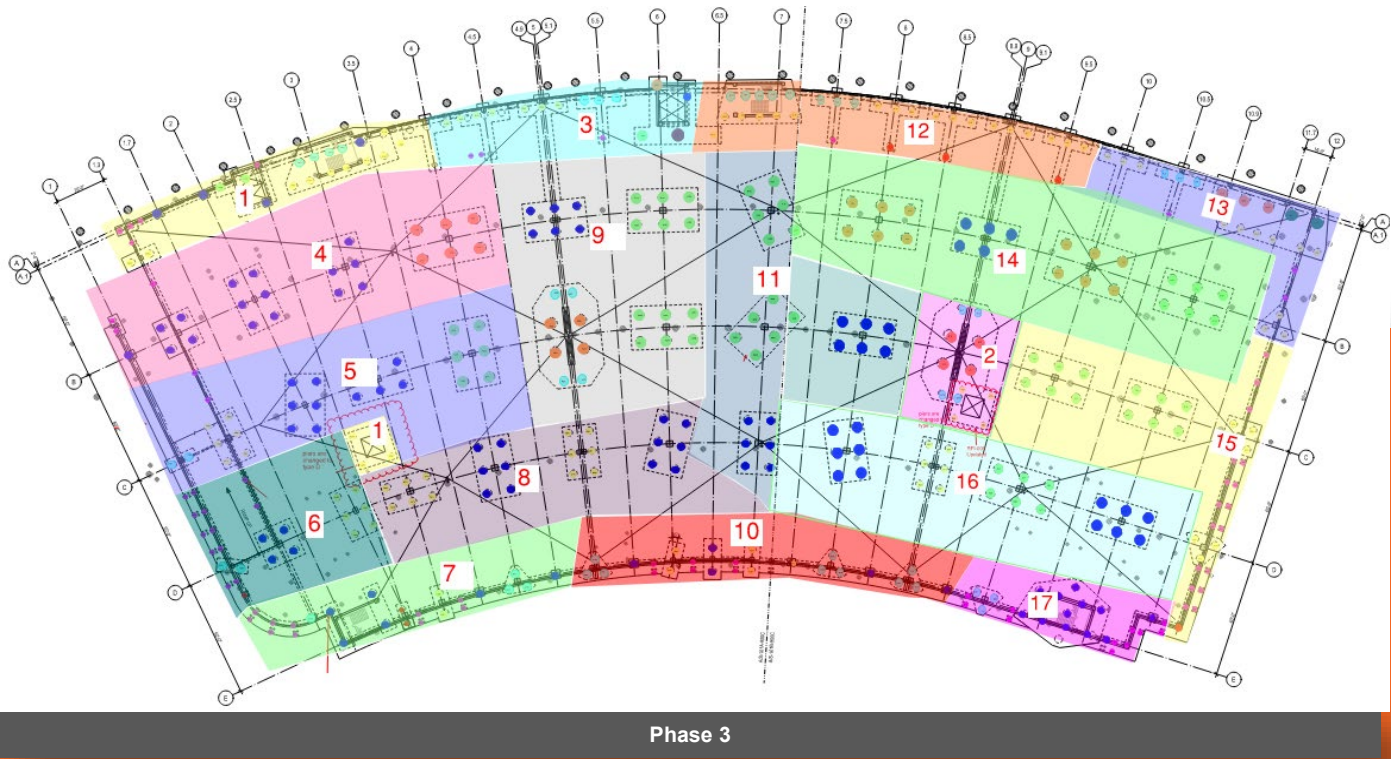






Demolition and Excavation work through May 2025

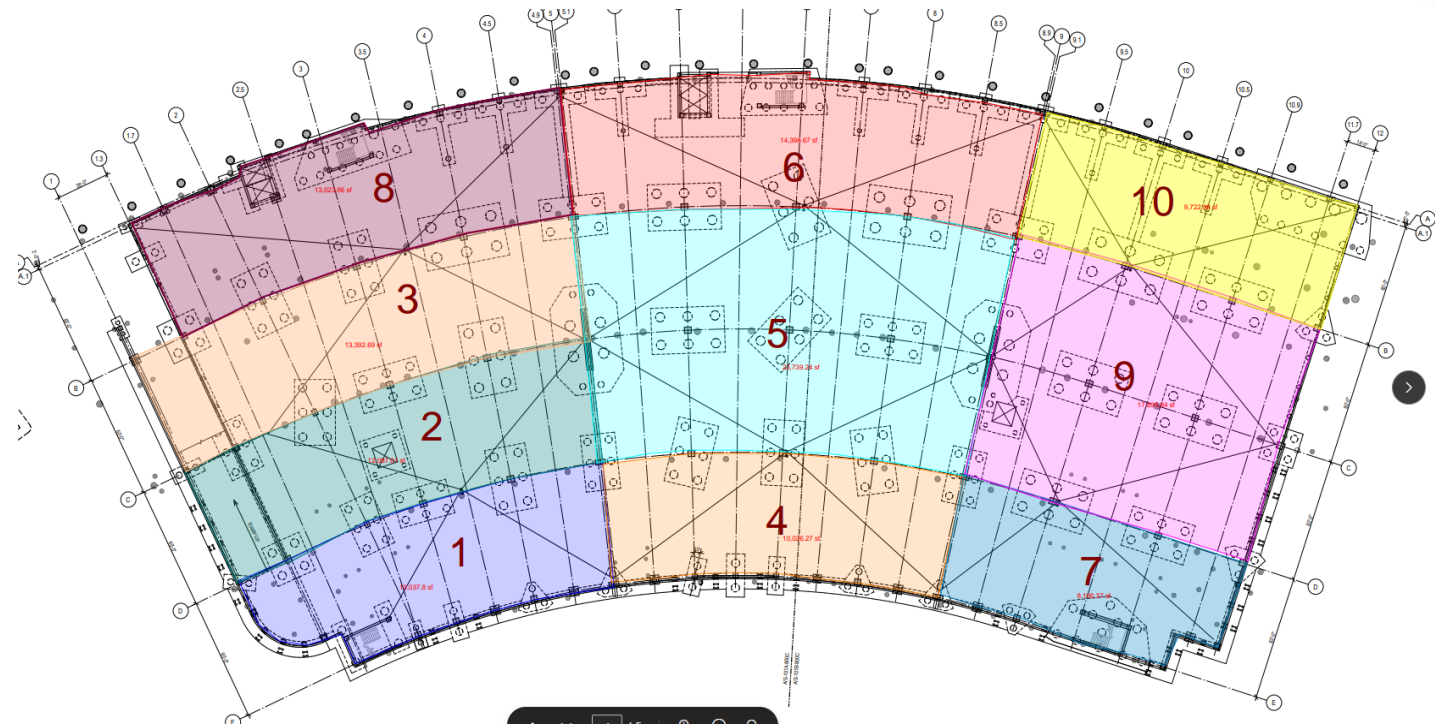
- Roadway closure continues - One lane access available for Emergency Vehicles
- Garage and Foundation Demolition work
- Retention System Installation
- Foundation excavation and drill piers
- Underground Utility work along roadway
- Tower Crane Installations





Demolition and Excavation work through August 2025

- Garage and Foundation Demolition work
- Retaining Walls, Pier Cap, and grade Beams
- Underground Utility work along roadway



Emergency Lane – Upper Level



# THANK YOU

