



# Welcome to the Railroad Corner Pedestrian Bridge and Improvement Feasibility & Planning Study



We are glad you are here to learn about the project and share your feedback!

The display boards show the potential approach facilities on each side of the pedestrian bridge. Place a dot on the Alternative you prefer.

The evaluation matrix provides a comparison of the alternatives against several criteria.

Leave your feedback on the comment form and visit the project website to stay informed.

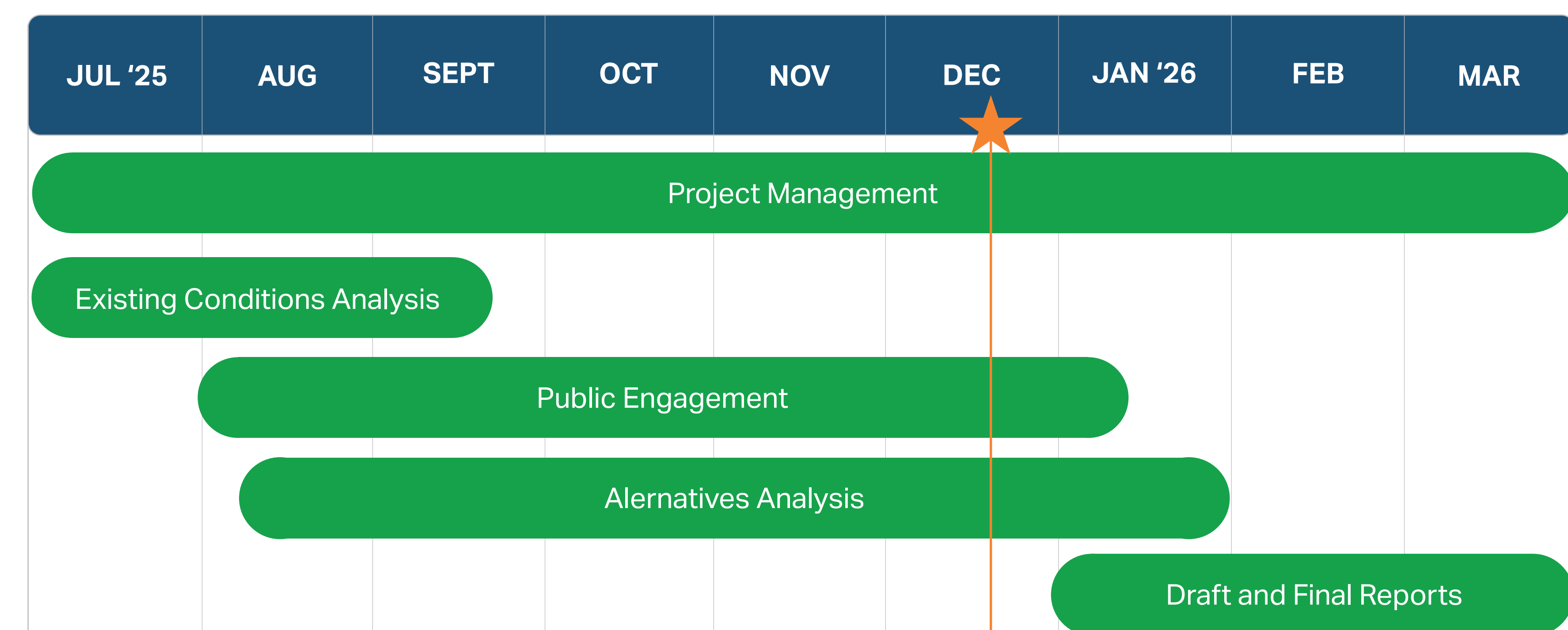
## Study Area



## Project Website + Online Survey



## Project Schedule





Most Favorable

Neutral

Less Favorable

Name and Description



Mode and Access Points

 **ADA**

 **Walk**

 **Bike**

Cost & Complexity



Right of Way Impacts



Utility Impacts

 **Water**

 **Sewer**

 **Electric**

Public and Stakeholder Support



Overall Performance

West Side - Garage			East Side - University								
Alternative 1			Alternative 2		Alternative 3			Alternative 4			Alternative 5
1A	1B	1C	2A	2B	3A	3B	3C	4A	4B	4C	5
Ramp & External Stairs	External Stairs with Bike Gutter	No Additional	Elongated Switchback	Elongated Switchback with Campus Spur Ramp	Zig-Zag Ramp	Zig-Zag Ramp with Stair on Tower Exterior	Zig-Zag Ramp with Internal Tower Stairwell	Elevator with Dual External Staircases	Elevator with Split Staircase	Elevator with Tower Staircase	Elevator and Stairs with Alternative 2B
Stairs and Elevator Accessible via Parking Garage. Boulevard Street One-Way from Garage to Russell Street			Stairs to Geathers Street. Watson Street Partially Closed		Bulb Out on Watson Street	Mid-Block Crossing on Watson Street		Mid-Block Crossing on Watson Street		Mid-Block Crossing on Watson Street	Watson Street Partially Closed
2	1	1	1	2	1	1	1	1	1	1	3
4	3	2	2	3	2	3	2	3	3	2	4
2	2	1	1	2	1	1	1	1	1	1	3
600' Ramp \$\$	60' Staircase \$	None \$	430' Ramp and 50' Stairs \$\$\$	630' Ramp and 50' Stairs \$\$\$	450' Ramp and 20' Stairs \$\$\$	450' Ramp and 80' Stairs \$\$\$	450' Ramp and 120' Stairs \$\$	Elevator and 60' Stairs \$\$	Elevator and 125' Stairs \$\$	Elevator and 60' Stairs \$\$	Elevator, 630' Ramp, and 110' Stairs \$\$\$
Treadwell Historic District (11,600 ft²)	Treadwell Historic District (2,500 ft²)	None	Orangeburg Massacre Historic District (15,000 ft²)	Orangeburg Massacre Historic District (19,500 ft²)	Orangeburg Massacre Historic District (17,000 ft²)	Orangeburg Massacre Historic District (18,000 ft²)	Orangeburg Massacre Historic District (17,000 ft²)	Orangeburg Massacre Historic District (5,000 ft²)	Orangeburg Massacre Historic District (5,500 ft²)	Orangeburg Massacre Historic District (4,500 ft²)	Orangeburg Massacre Historic District (20,00 ft²)
None	None	None	220' Main	220' Main	None	80' Main	None	80' Main	160' Main	None	220' Main
None	None	None	260' Main and 1 manhole	260' Main and 1 manhole	110' Main	110' Main	110' Main	None	None	None	260' Main and 1 manhole
250' Overhead Line and 2 Utility Poles	50' Overhead Line and 1 Utility Pole	None	450' Overhead Line and 4 Utility Poles	450' Overhead Line and 4 Utility Poles	80' Overhead Line	80' Overhead Line	80' Overhead Line	80' Overhead Line	80' Overhead Line	80' Overhead Line	450' Overhead Line and 4 Utility Poles
To Be Added After Public Comment Period Has Closed											
Most Favorable	Most Favorable	Most Favorable	Less Favorable	Less Favorable	Less Favorable	Less Favorable	Neutral	Neutral	Neutral	Most Favorable	Less Favorable





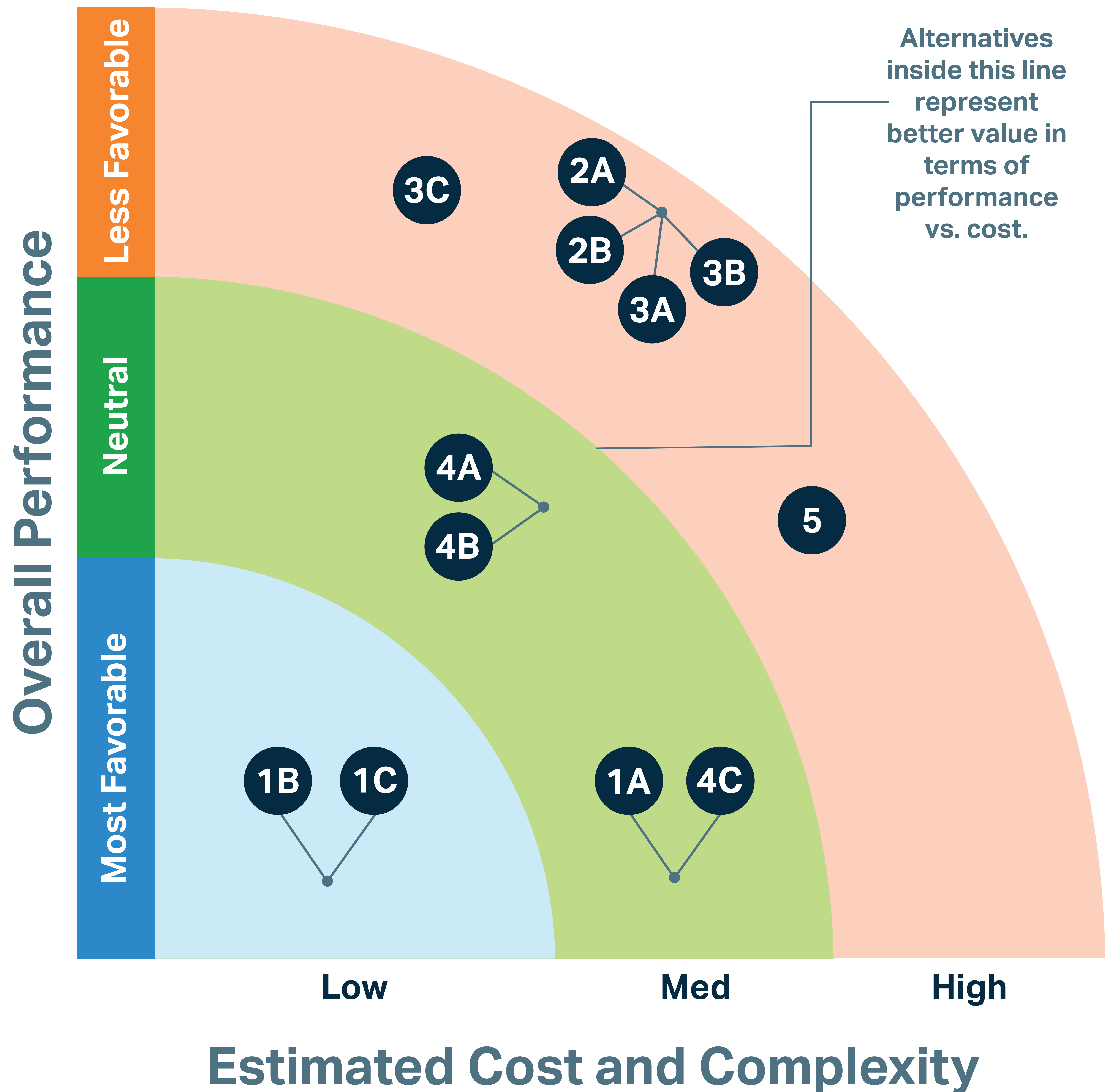
# Evaluation Process

Railroad Corner & Pedestrian Bridge  
Feasibility & Planning Study



## Cost Considerations: Relative Comparisons

- Chart compares high-level estimated costs (horizontal axis) and Overall Performance Results (vertical axis).
- Alternatives within the inner rings represent better value in terms of performance vs. cost.
- Public input to be added after comment period closes.







# Alternative 1 - Garage Side

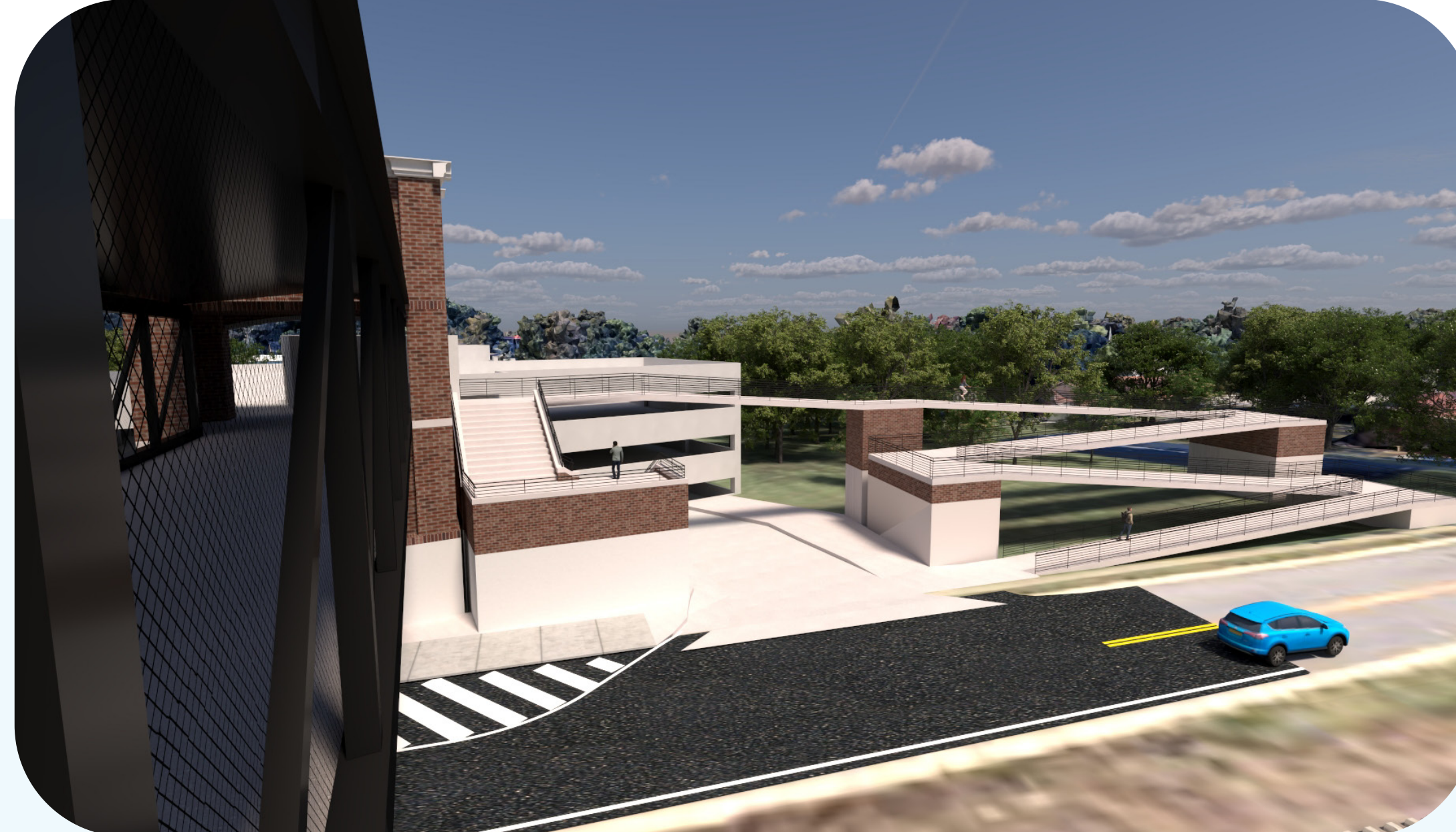
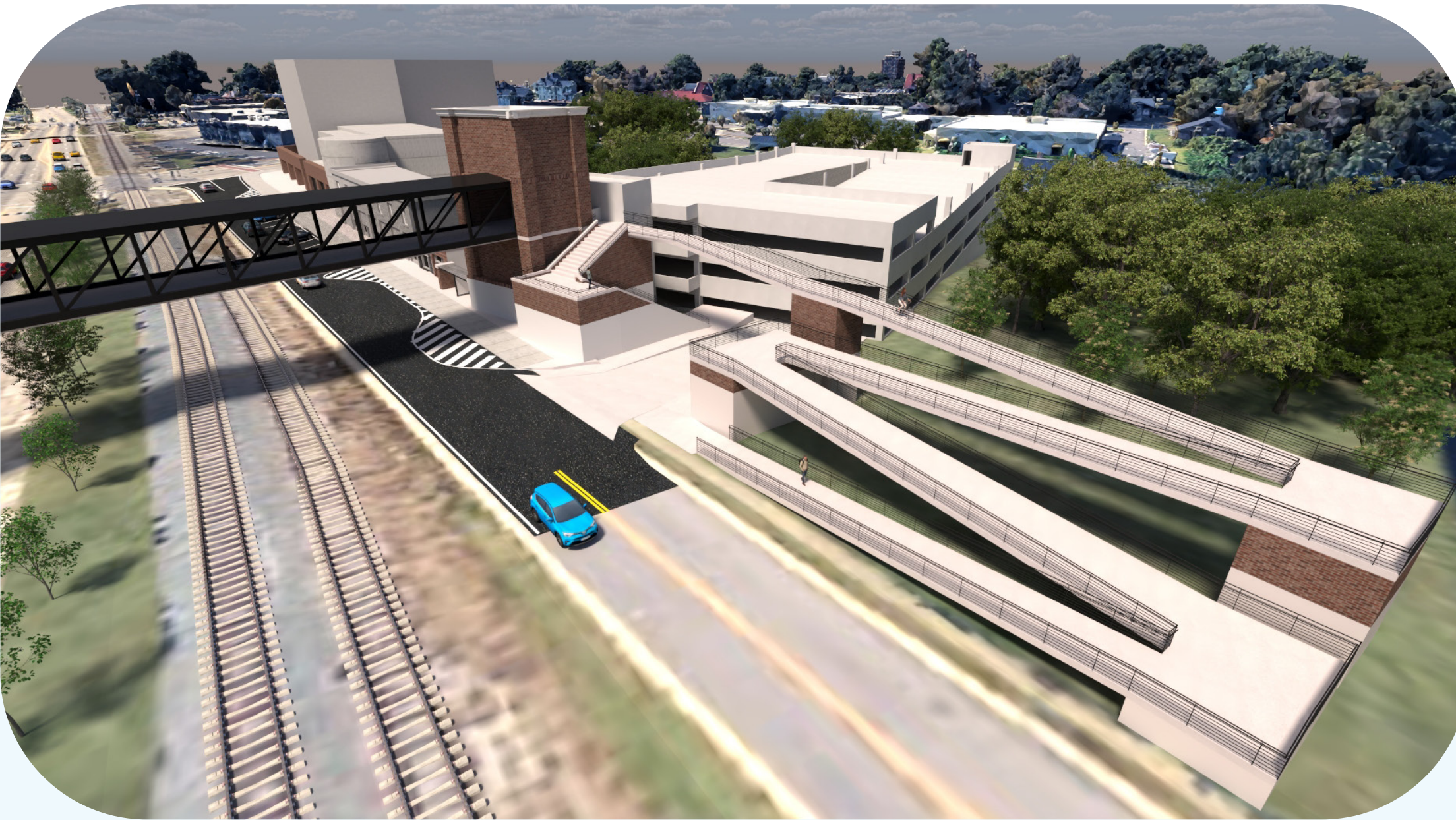
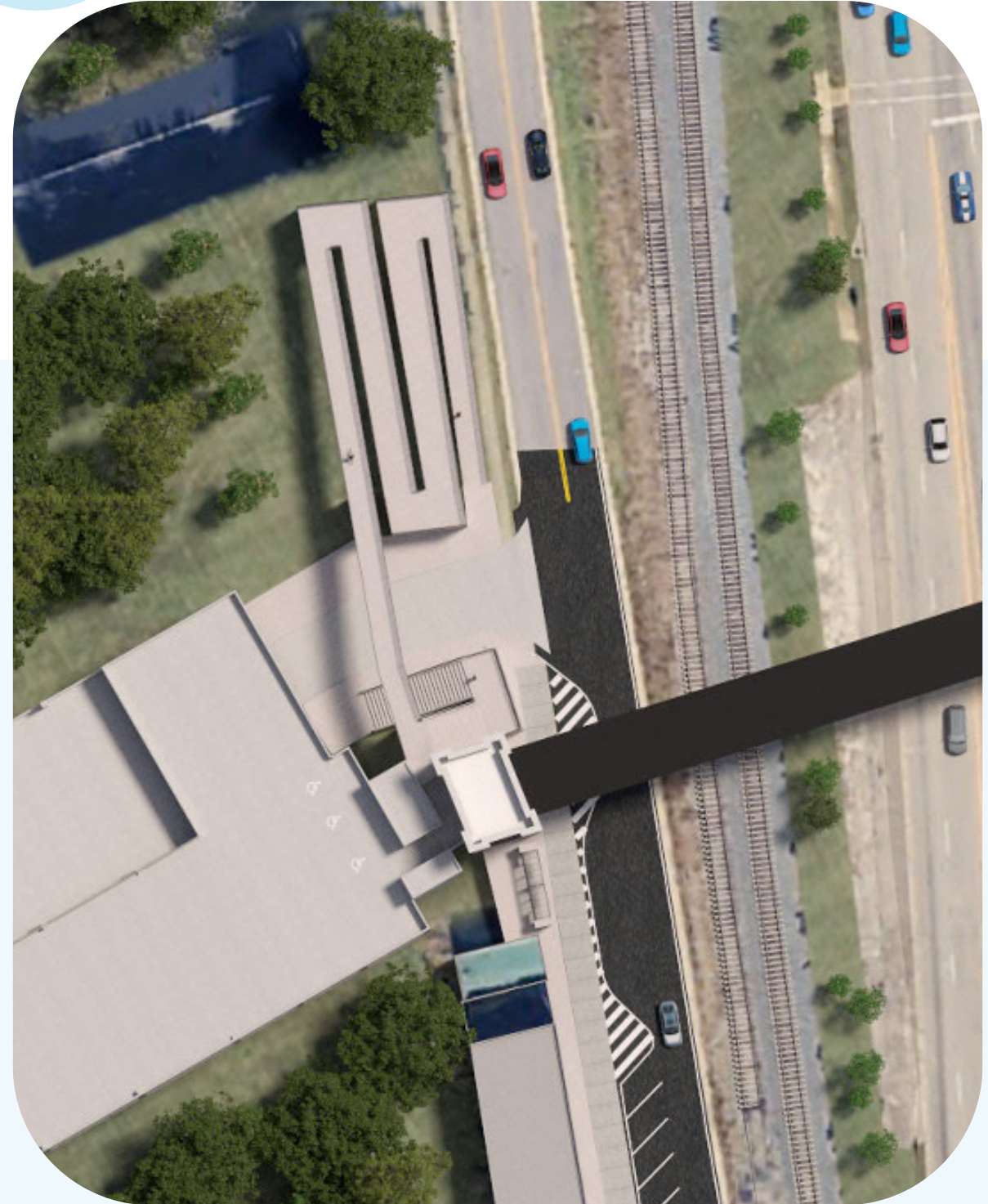
Railroad Corner & Pedestrian Bridge  
Feasibility & Planning Study



*All Alternatives include an Elevator and Stairs include with the Parking Deck. Design Options are subject to further review and approval by environmental agencies.*

Place one dot in the blue space below.  
Mark your Choice!

1A

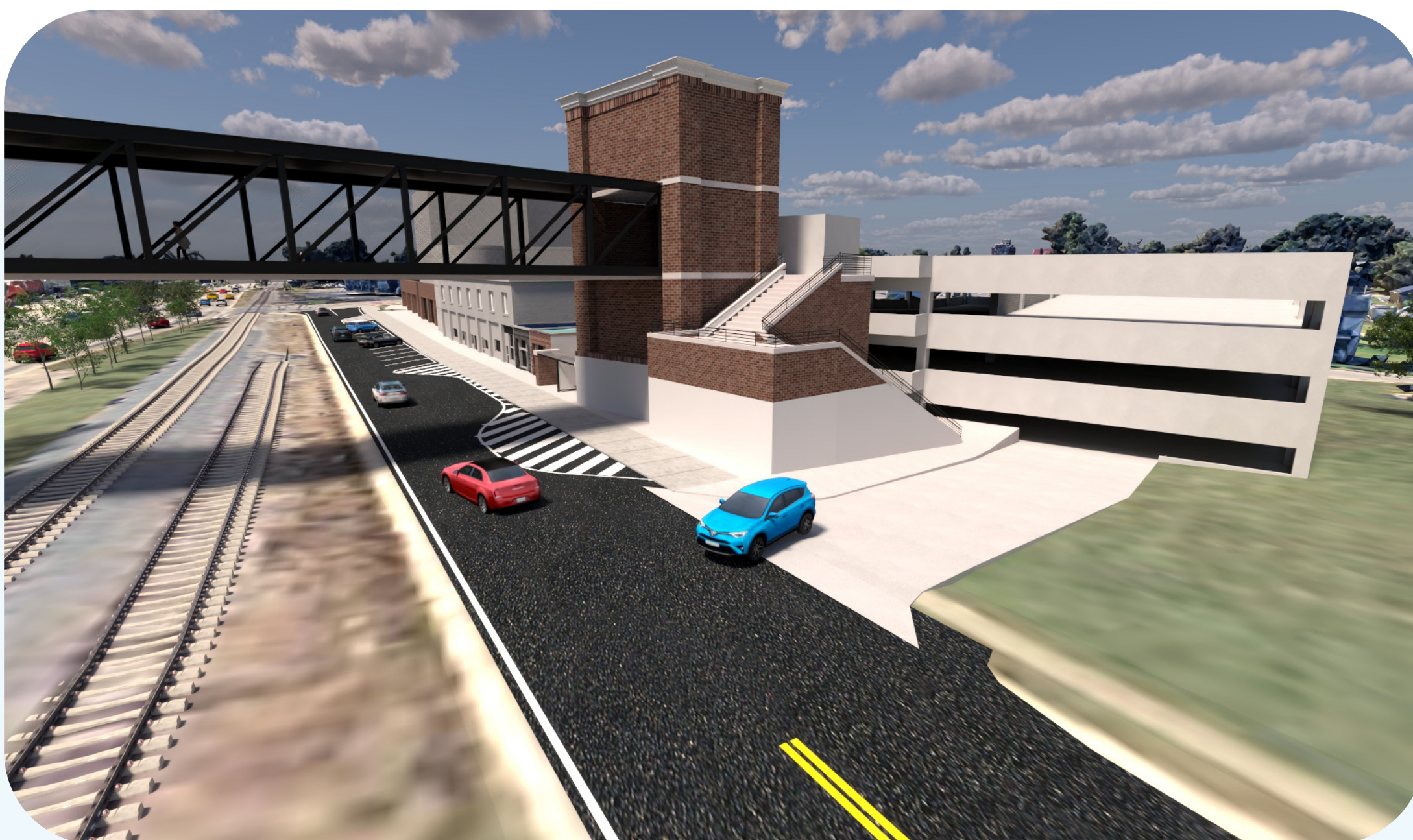
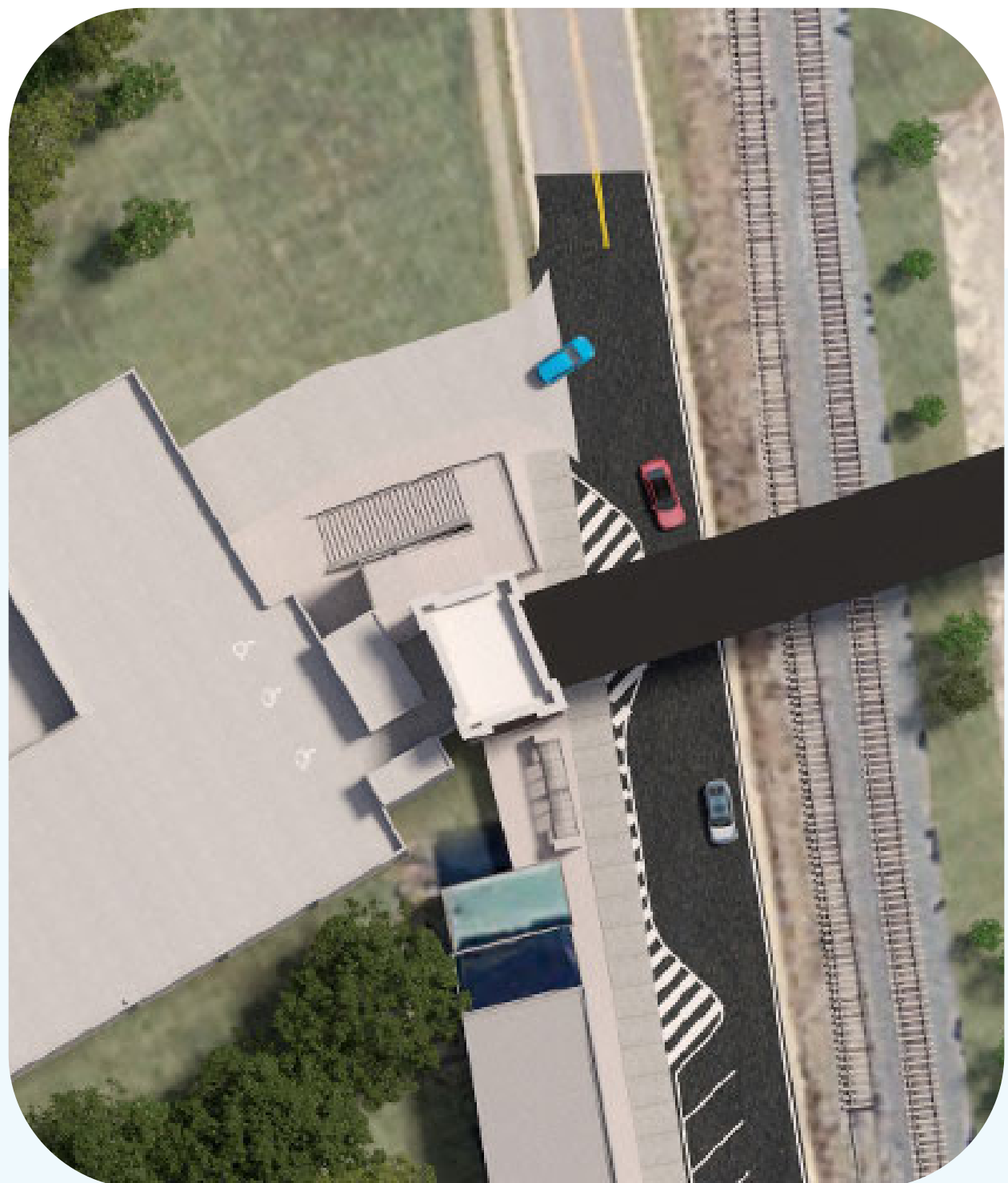


1A

**Ramp + External Stairs**

PLACE DOT HERE

1B



1B

**External Stairs +  
Bike Gutter**

PLACE DOT HERE

1C



1C

**No Additional**

PLACE DOT HERE





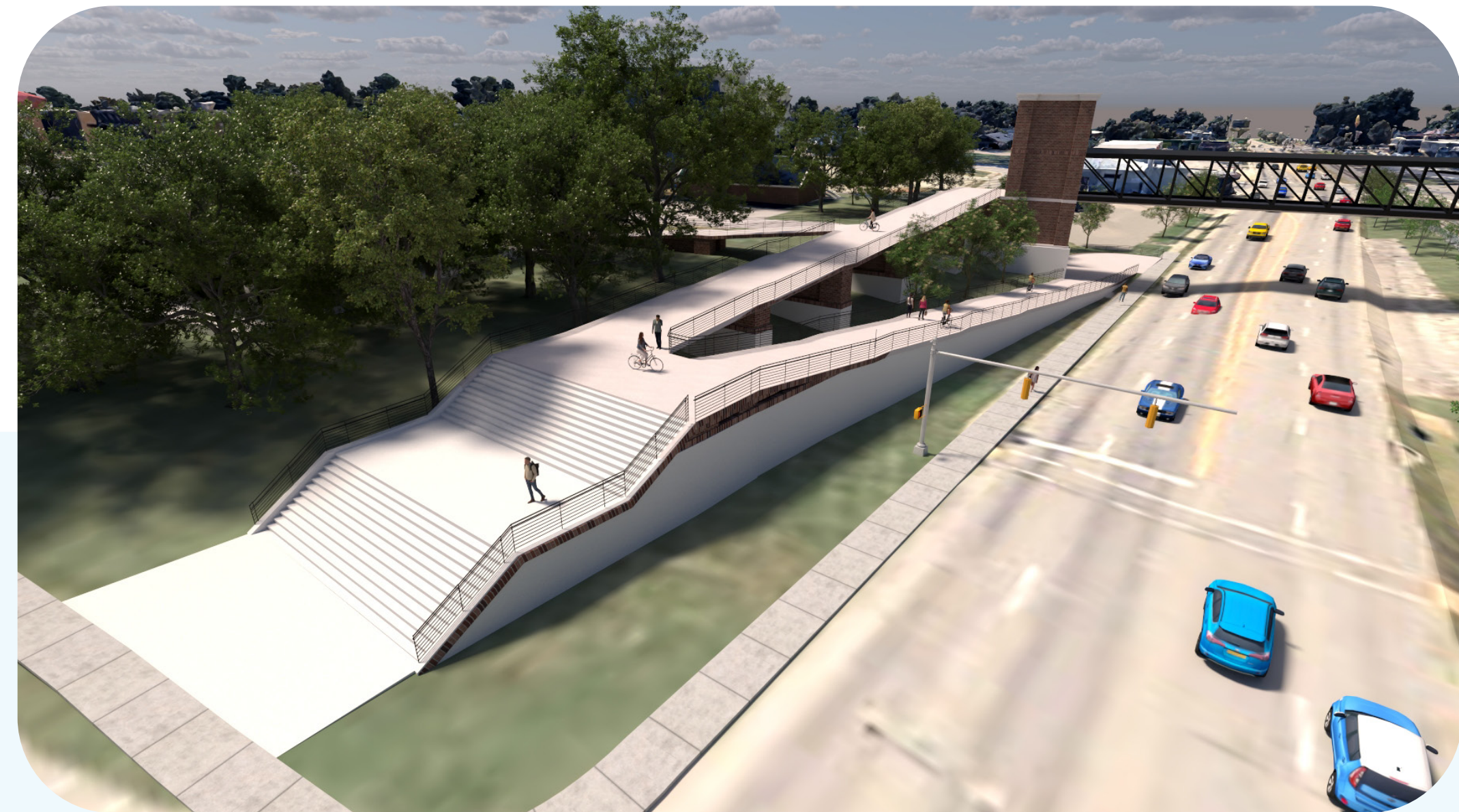
# Alternative 2 - Campus Side/ Elongated Switchback



*Design Options are subject to further review and approval by environmental agencies.*

**2A**

If you prefer this alternative, place one dot in the blue space below the options to mark your preference:



**2A Elongate Switchback**

PLACE DOT HERE

**2B**



**2B Elongate Switchback with Campus Spur Ramp**

PLACE DOT HERE