



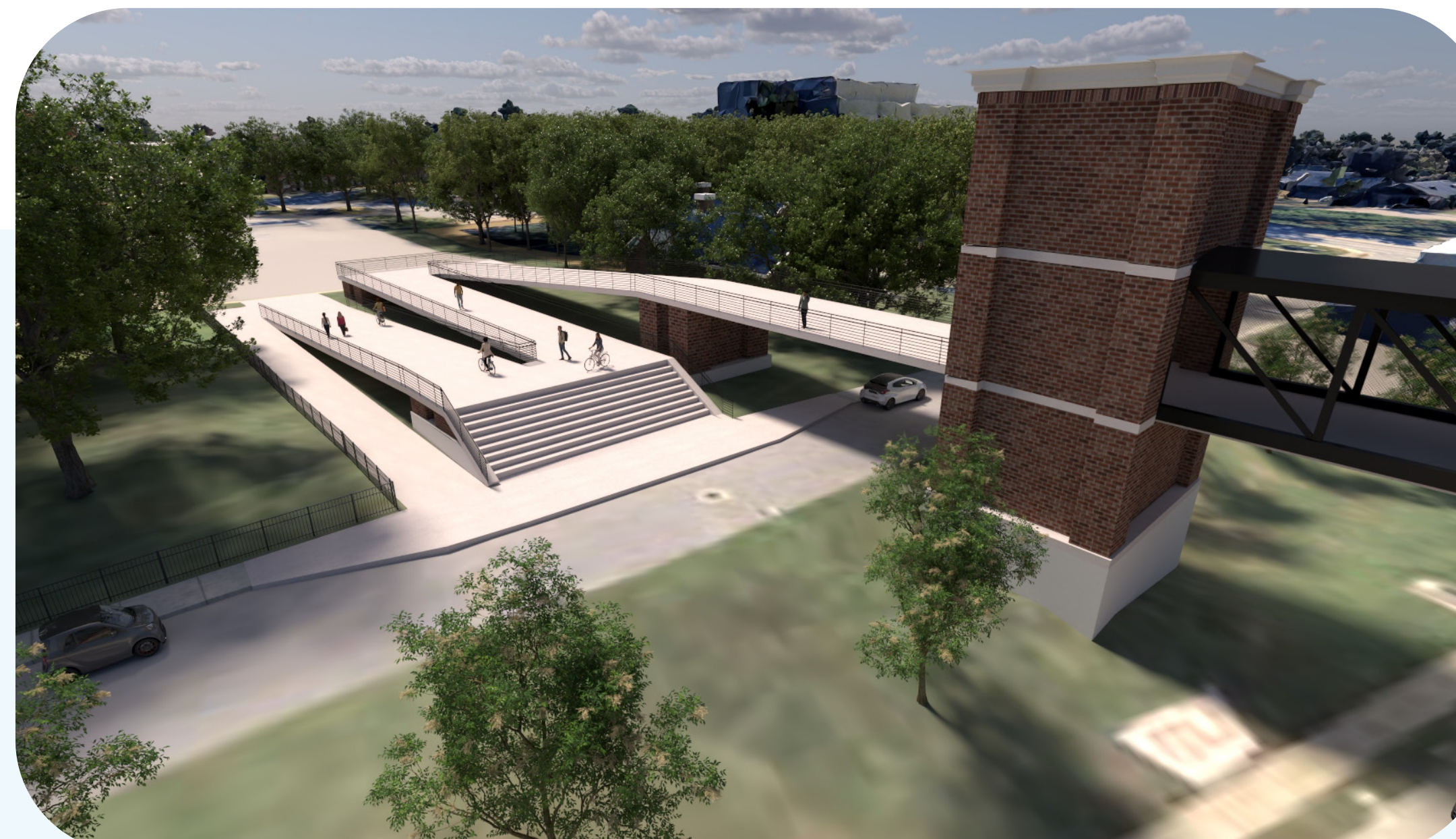
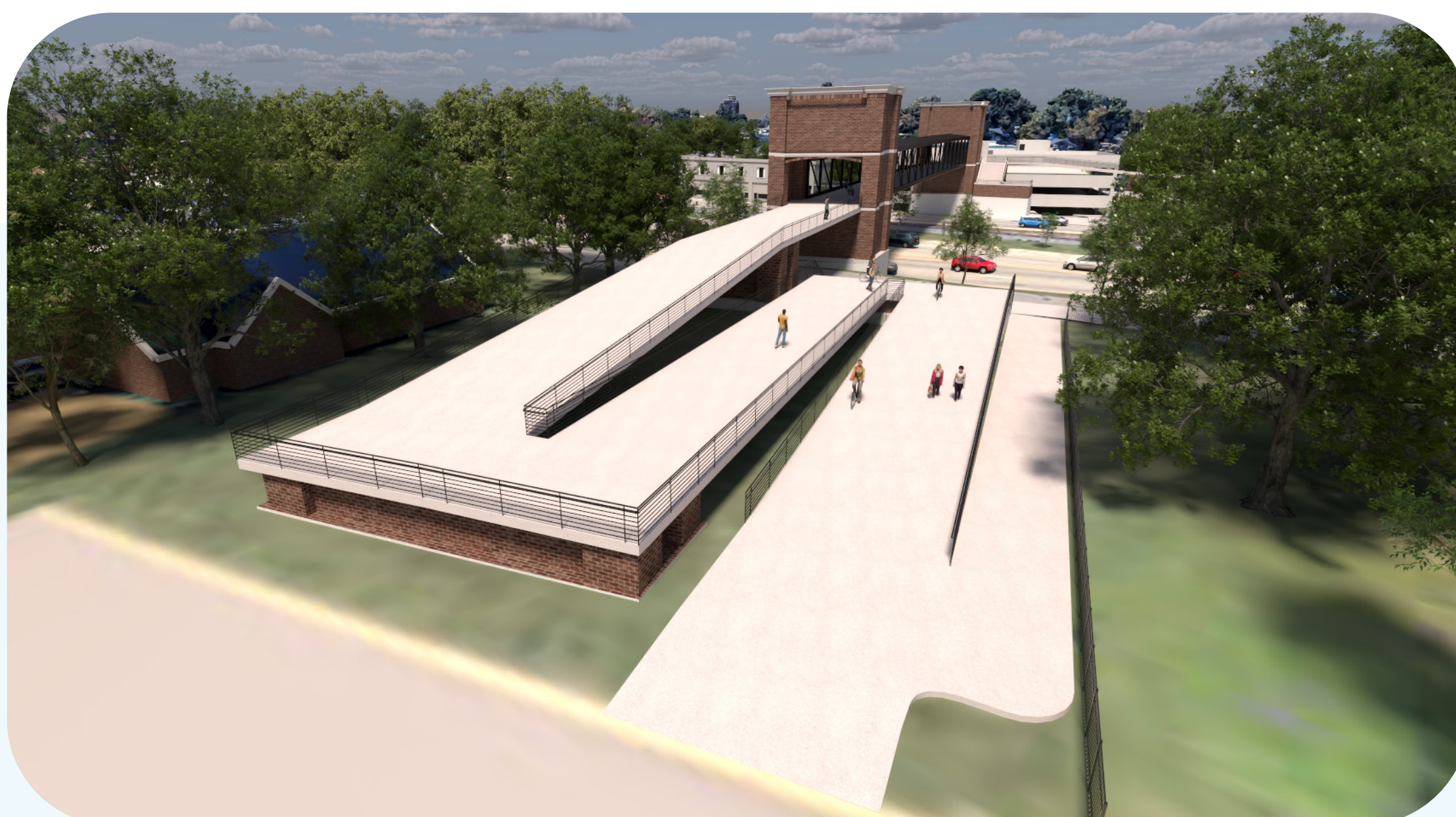
# Alternative 3 - Campus Side/ Zig Zag Ramp



*Design Options are subject to further review and approval by environmental agencies.*

3A

If you prefer this alternative, place one dot in the blue space below the options to mark your preference:

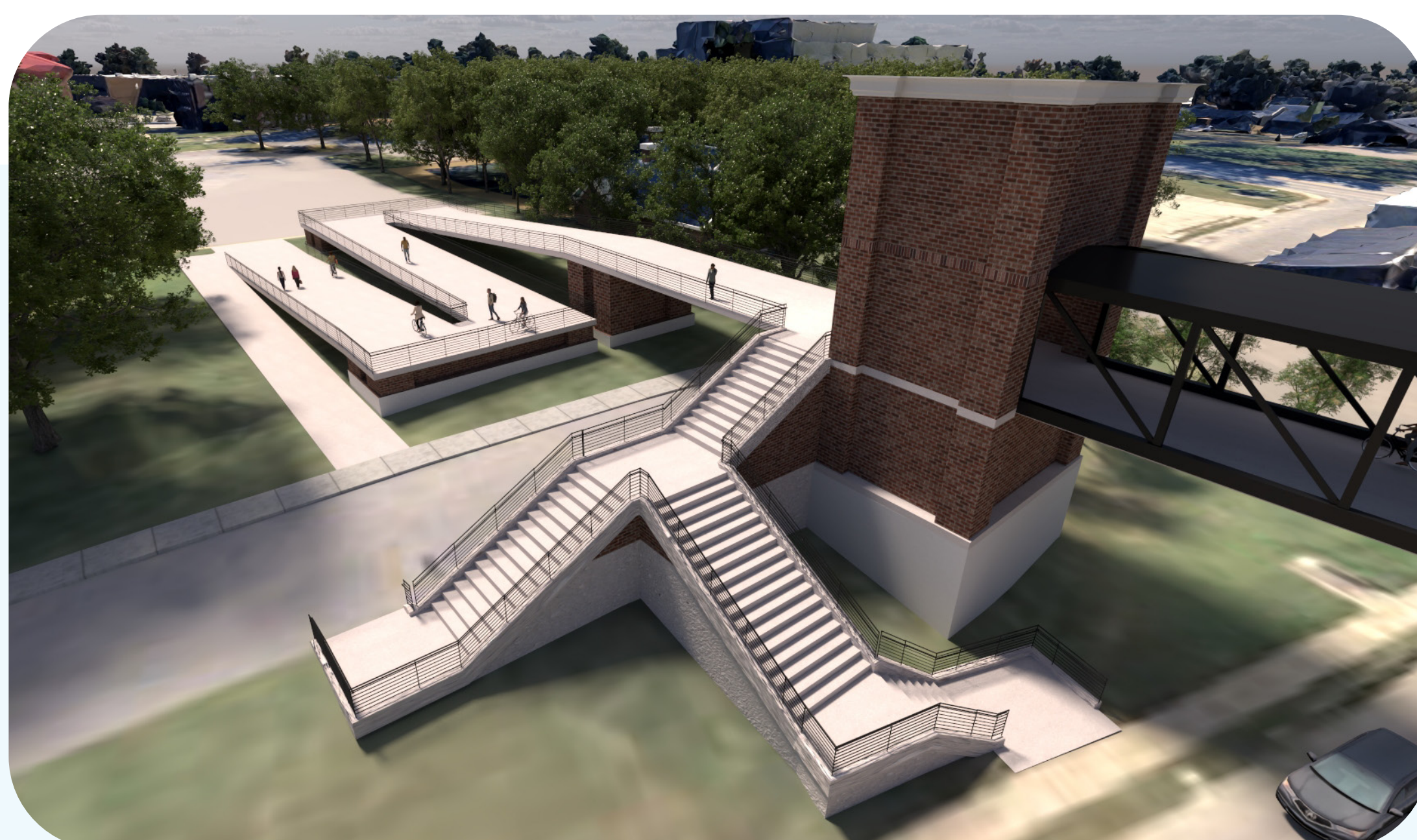
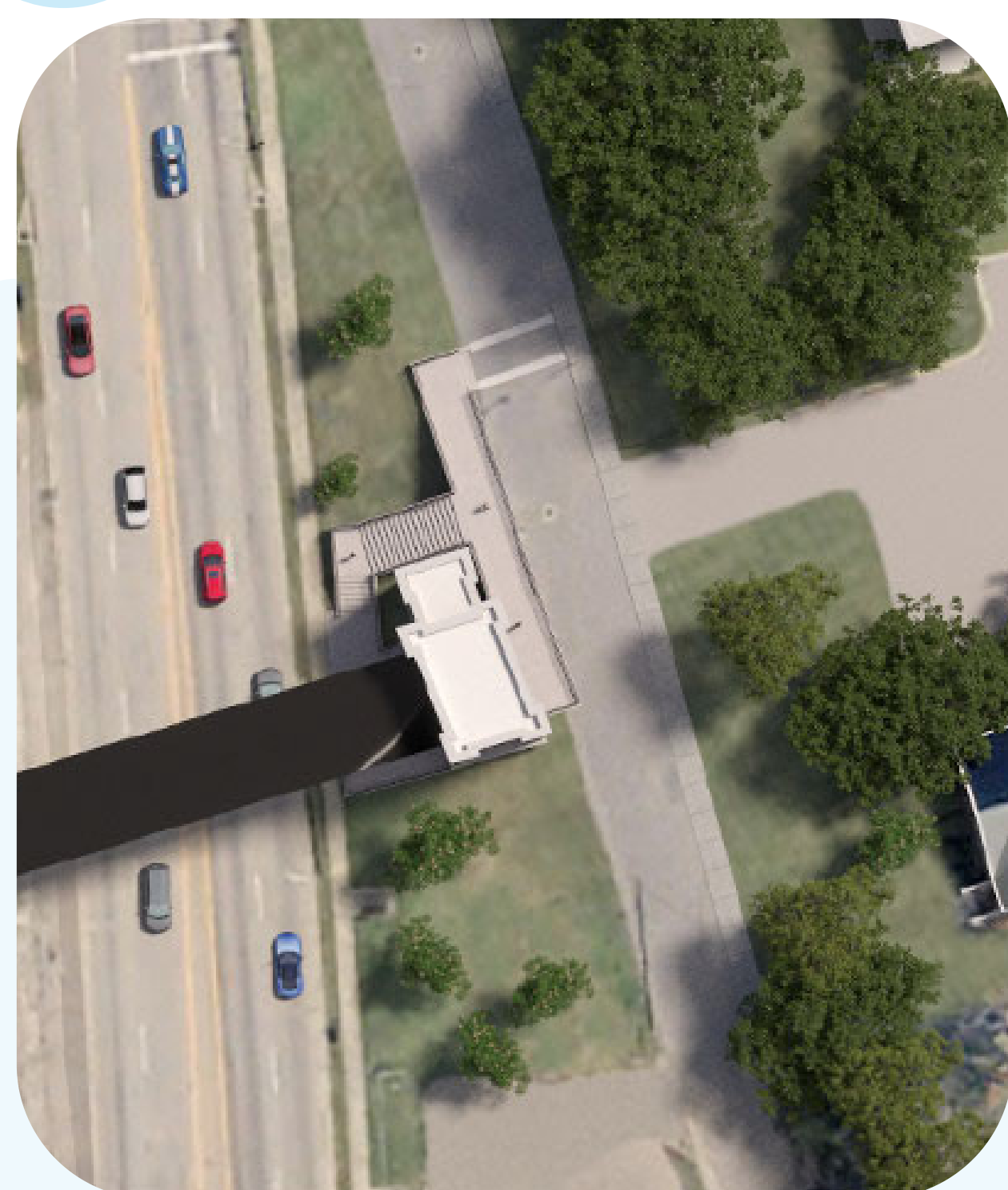


3A

**Zig-Zag Ramp**

PLACE DOT HERE

3B

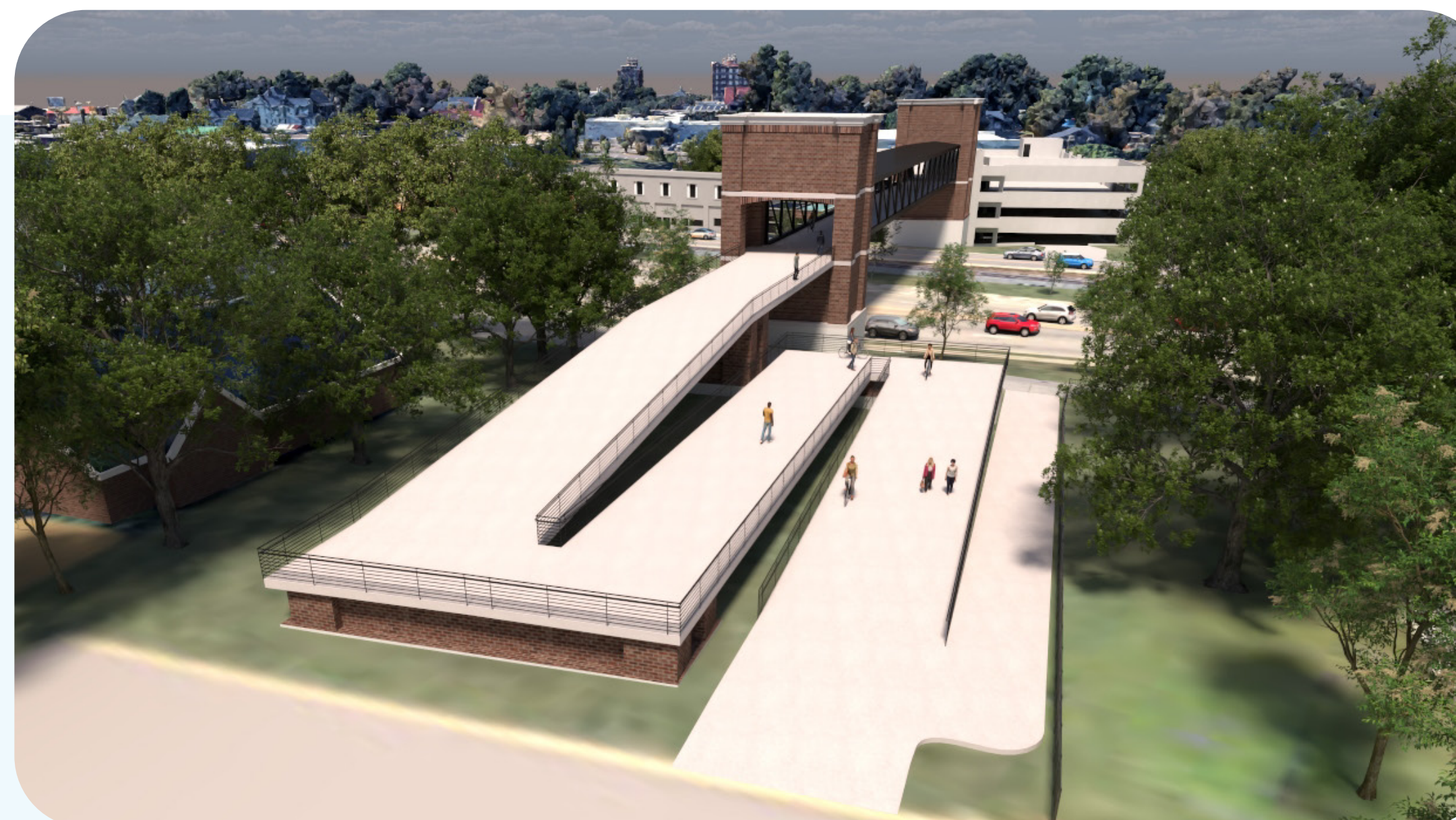


3B

**Zig-Zag Ramp with  
Stairs on Tower Exterior**

PLACE DOT HERE

3C



3C

**Zig-Zag Ramp with  
Internal Tower Stairwell**

PLACE DOT HERE





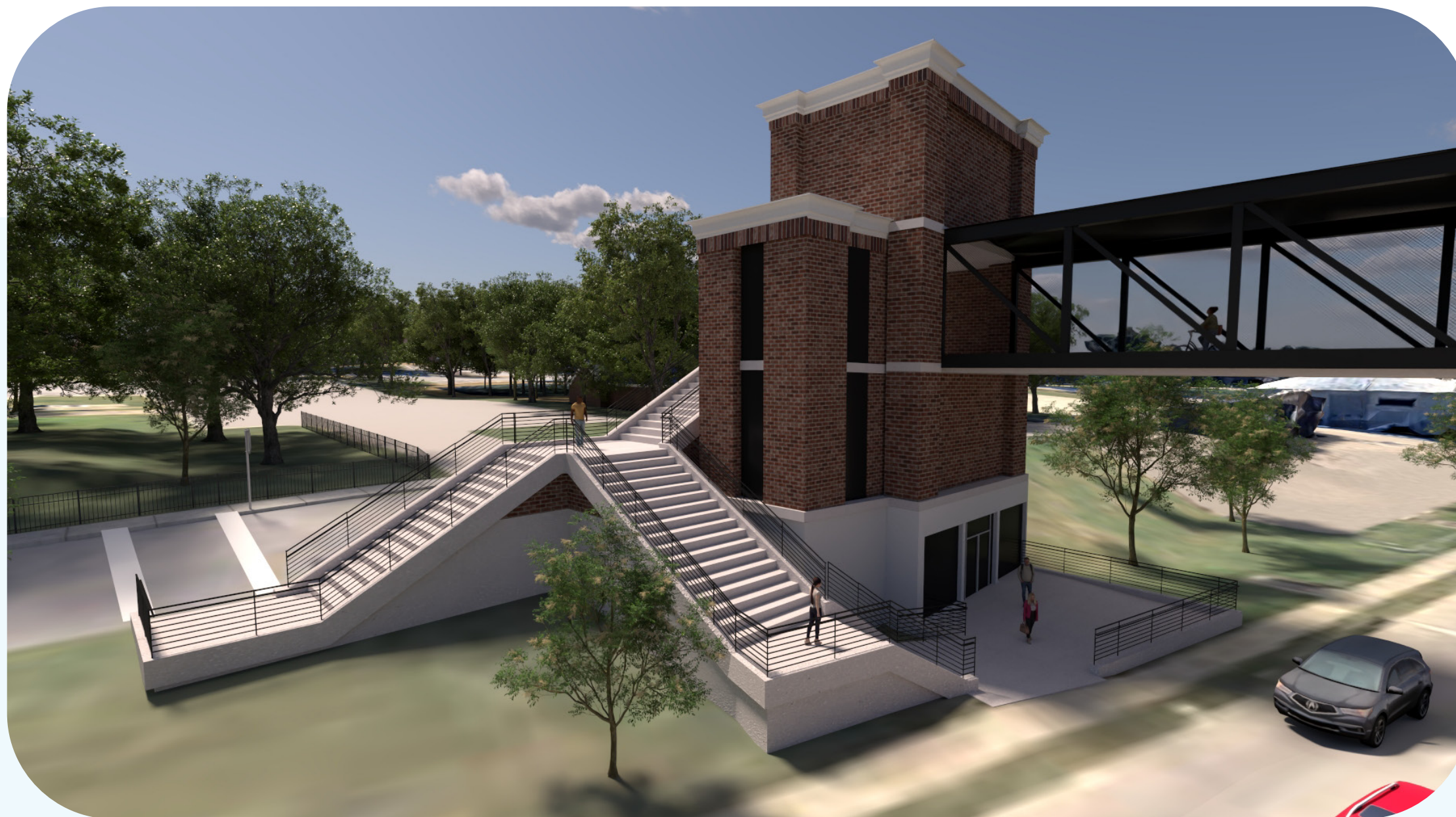
# Alternative 4 - Campus Side/ Elevator & Stairs



*Design Options are subject to further review and approval by environmental agencies.*

If you prefer this alternative, place one dot in the blue space below the options to mark your preference:

4A



4A

**Elevator with Dual  
External Staircase**

PLACE DOT HERE

4B



4B

**Elevator with Split  
Staircase**

PLACE DOT HERE



4C



4C

**Elevator with Tower  
Staircase**

PLACE DOT HERE





# Alternative 5 - Campus Side/ Ramps, Elevator & Stairs

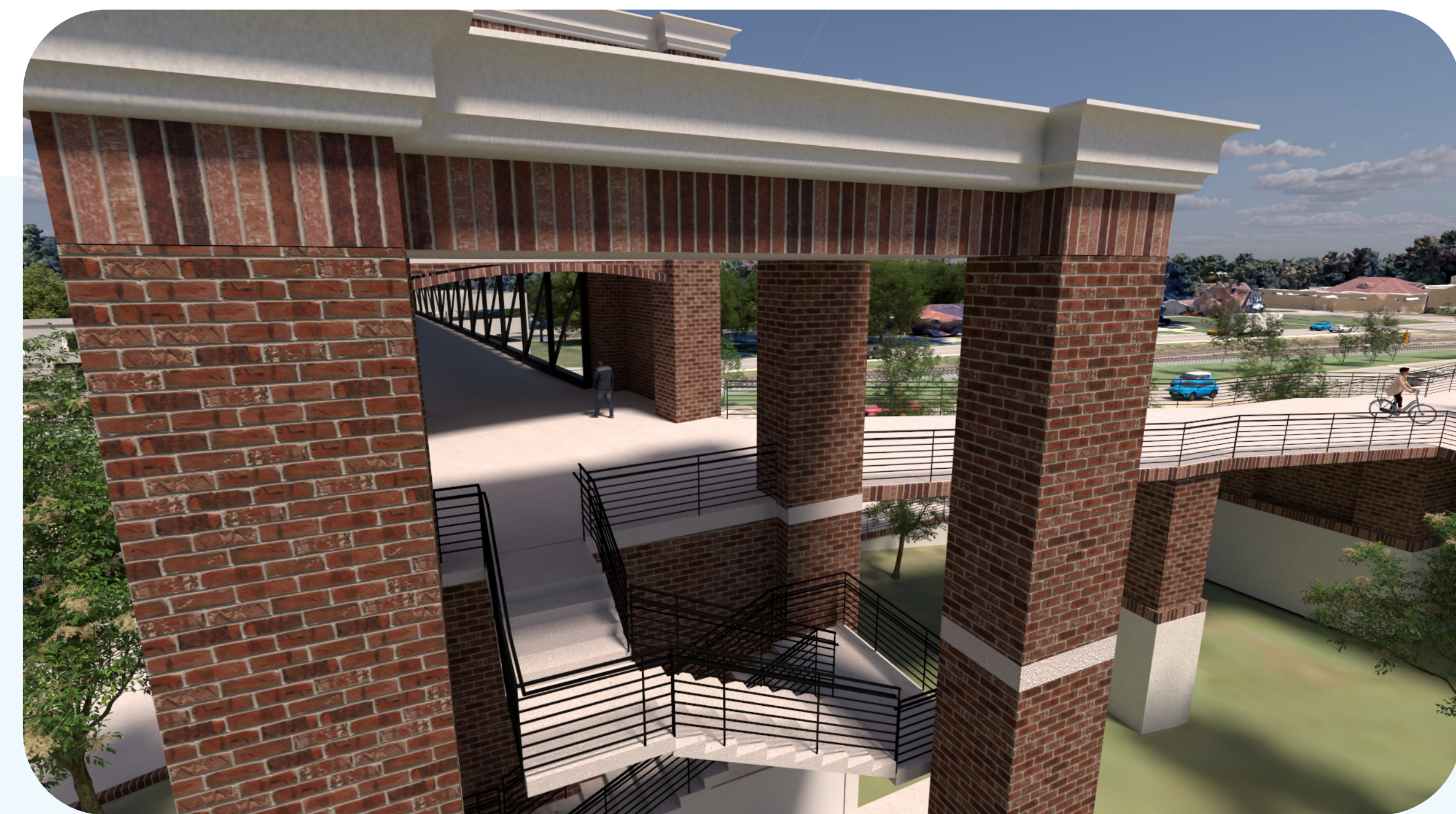
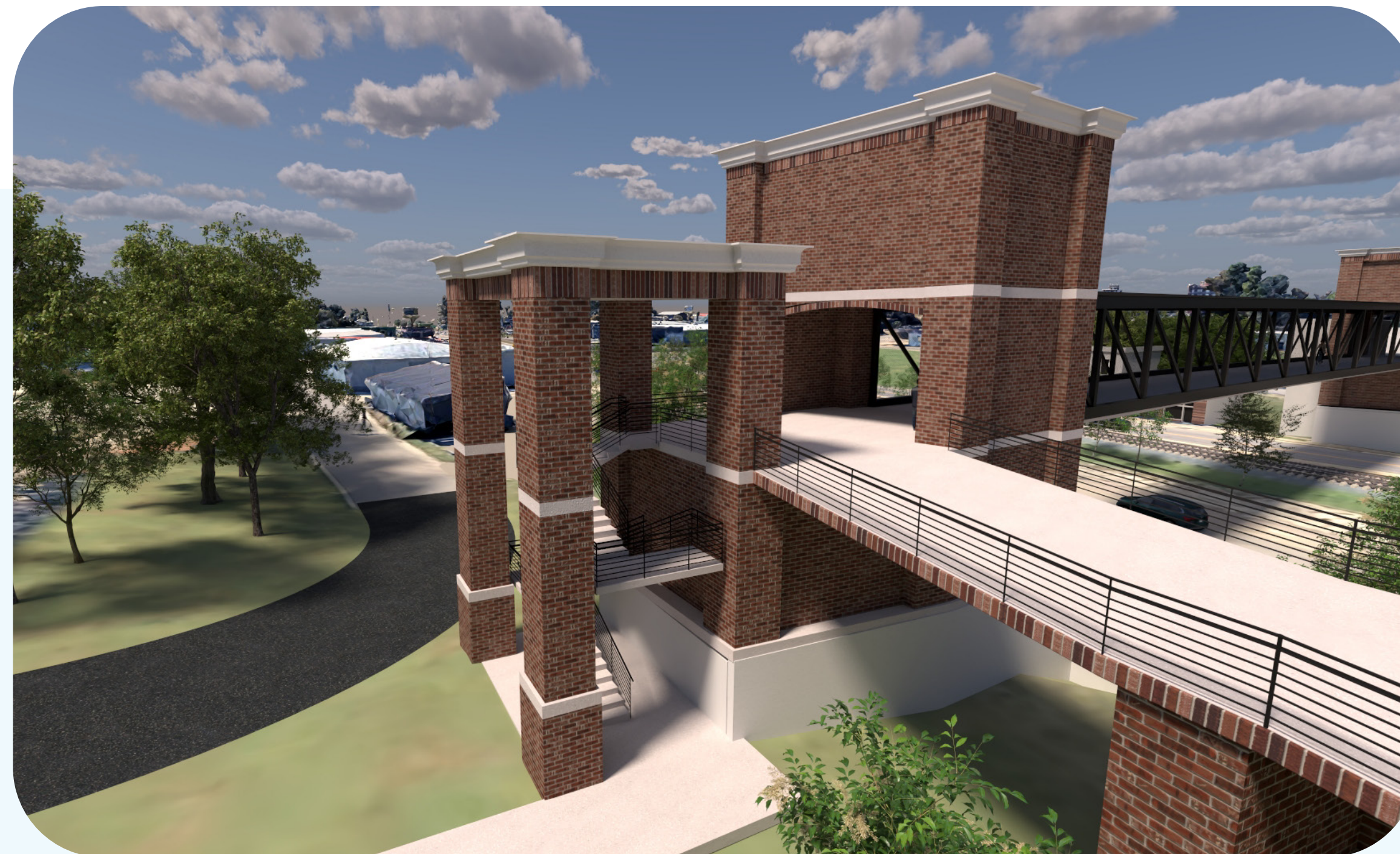
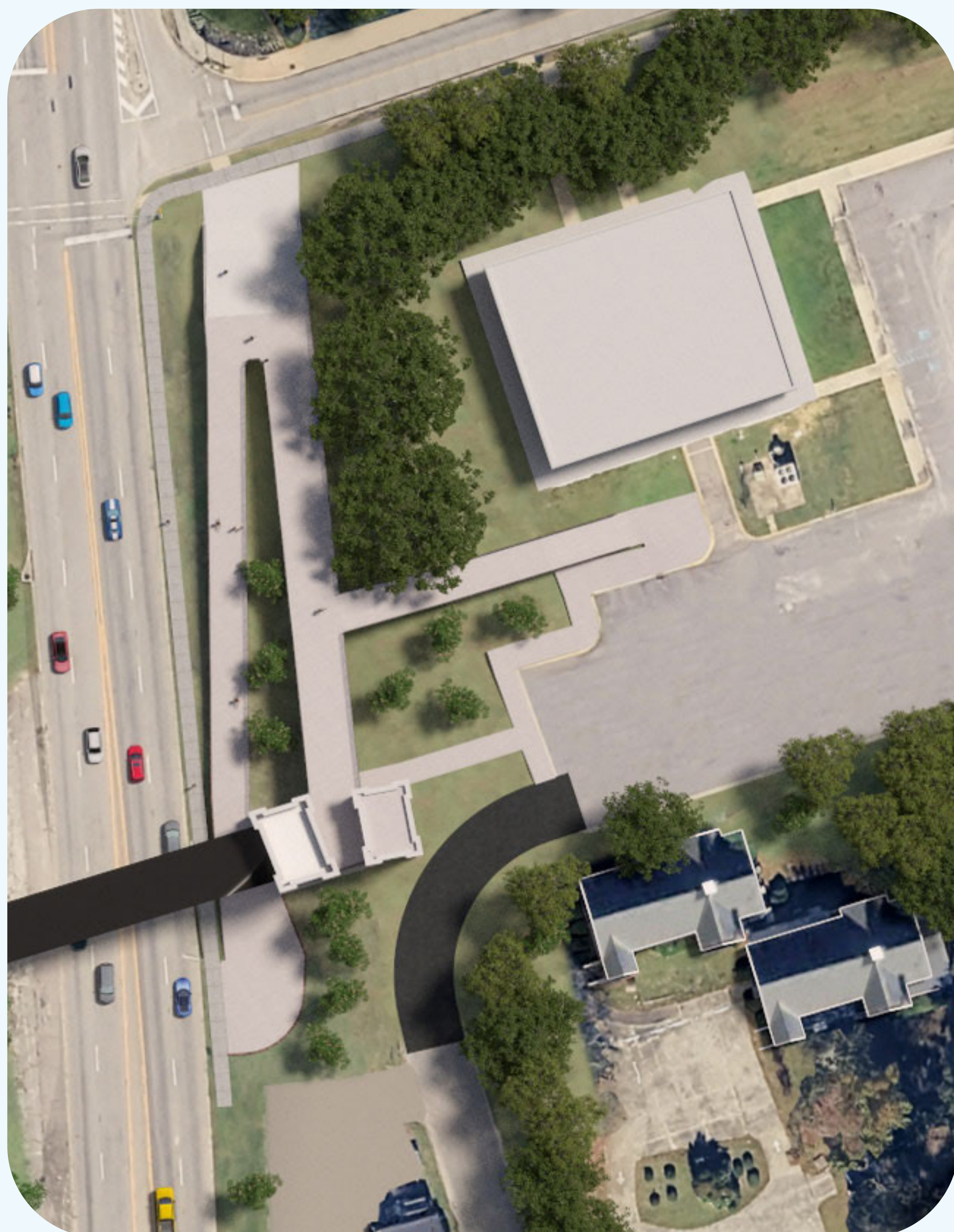


*Design Options are subject to further review and approval by environmental agencies.*

**If you prefer this alternative, place a dot in the blue space below:**

**5**

**Elevator and Stairs  
(with Alternative 2B)**



**5**



**PLACE DOT HERE**







# Boulevard Street - One Way

Railroad Corner & Pedestrian Bridge  
Feasibility & Planning Study



*Design Options are subject to further review and approval by environmental agencies.*





# Environmental Resources



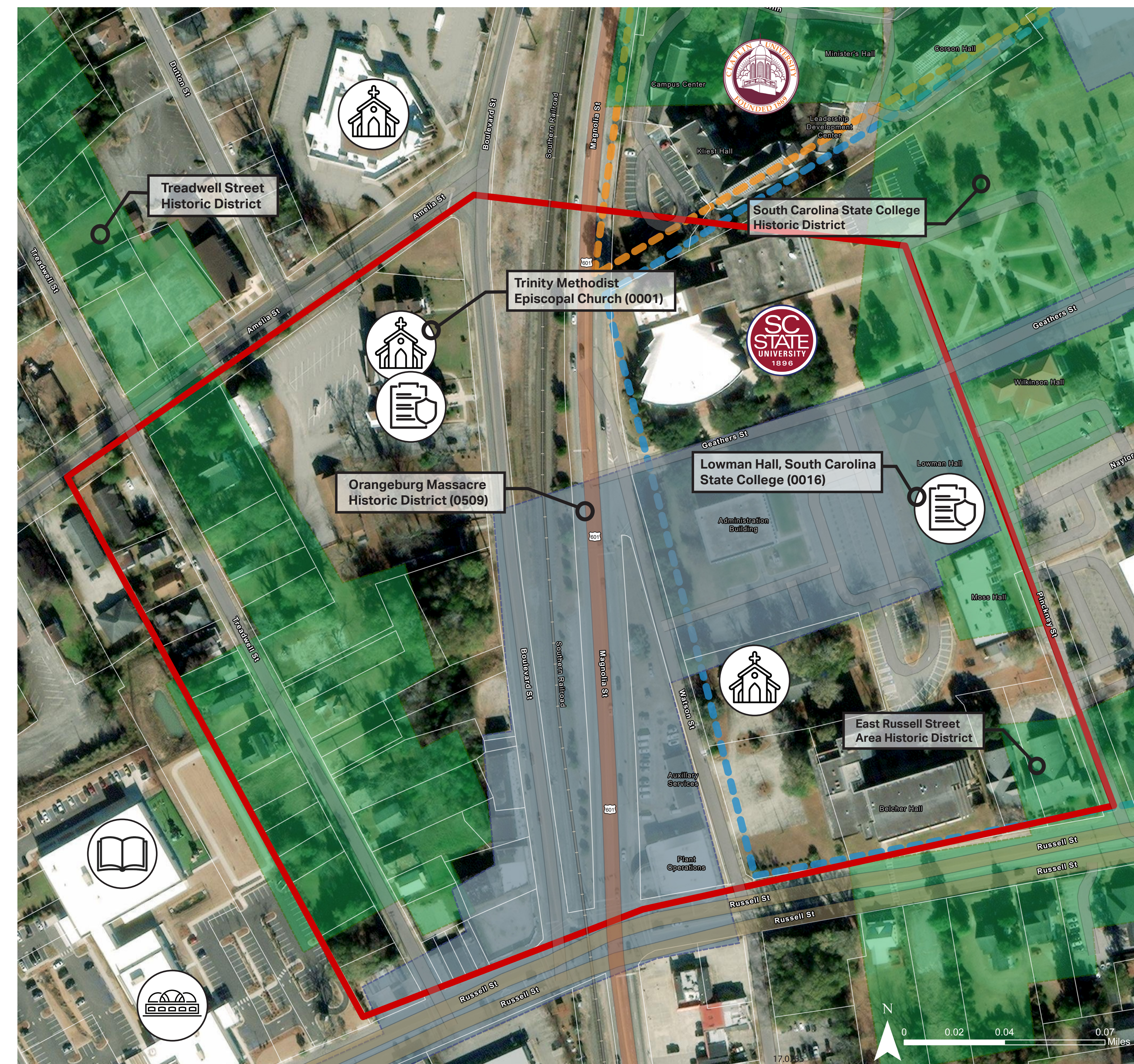
## National Register of Historic Places (NHRP) - Listed Properties

- Trinity Methodist Episcopal Church
- Treadwell Street HD
- South Carolina State College HD
- Lowman Hall at SC State College
- East Russell Street Area HD

Per Federal regulations, this project will comply with Section 106 requirements of the National Historic Preservation Act (NHPA).

Coordination with Federal compliance agencies is ongoing.

*Design Options are subject to further review and approval by environmental agencies.*



### Legend

Study Area	NRHP- Listed Historic District	Claflin University
Study Area Parcel	Church	South Carolina State University
NRHP*-Listed Resource	Conference Center	
NRHP*-Eligible Historic District	Library	

NRHP\* = National Register of Historic Places  
National Environmental Policy Act (NEPA)



